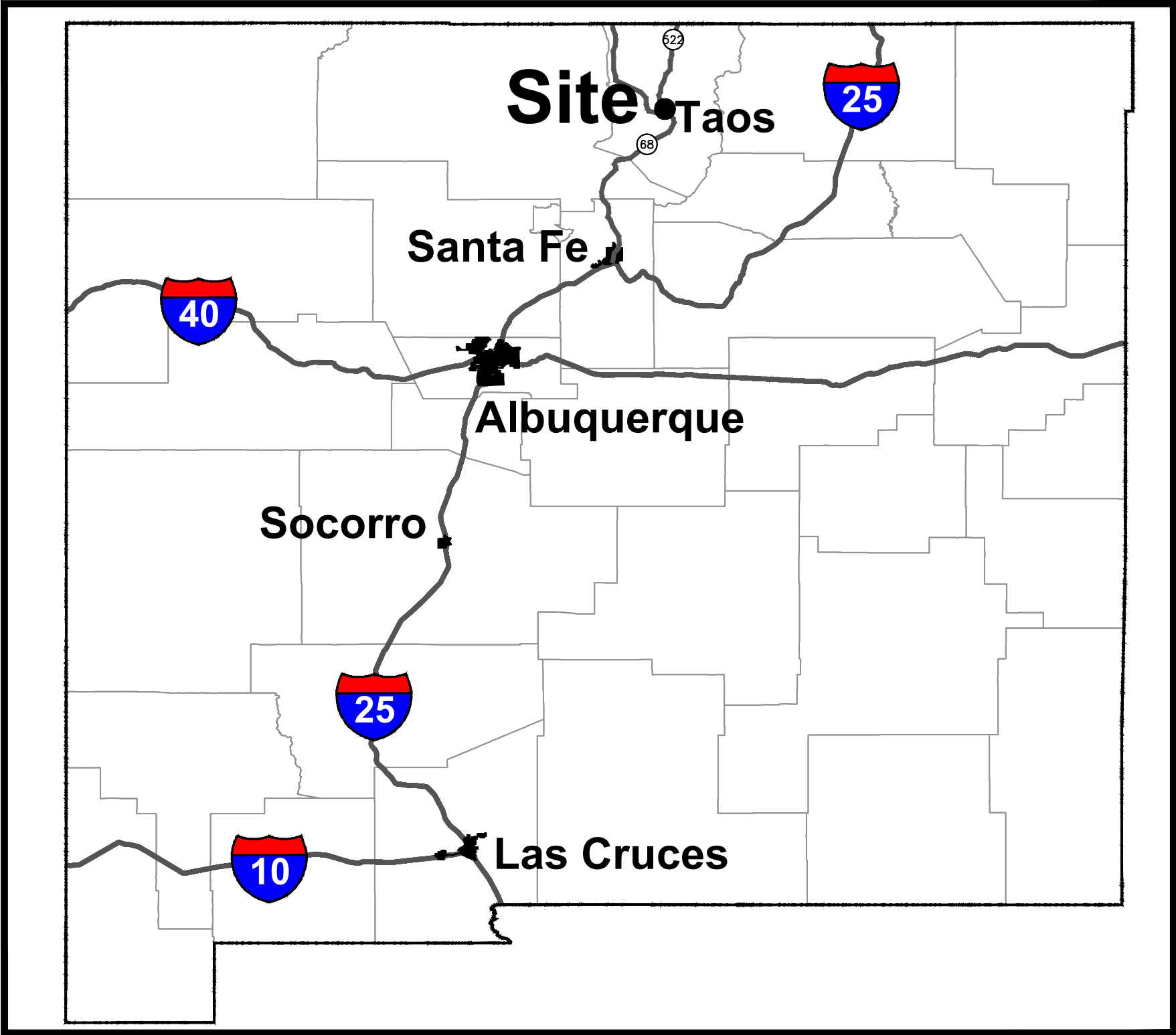


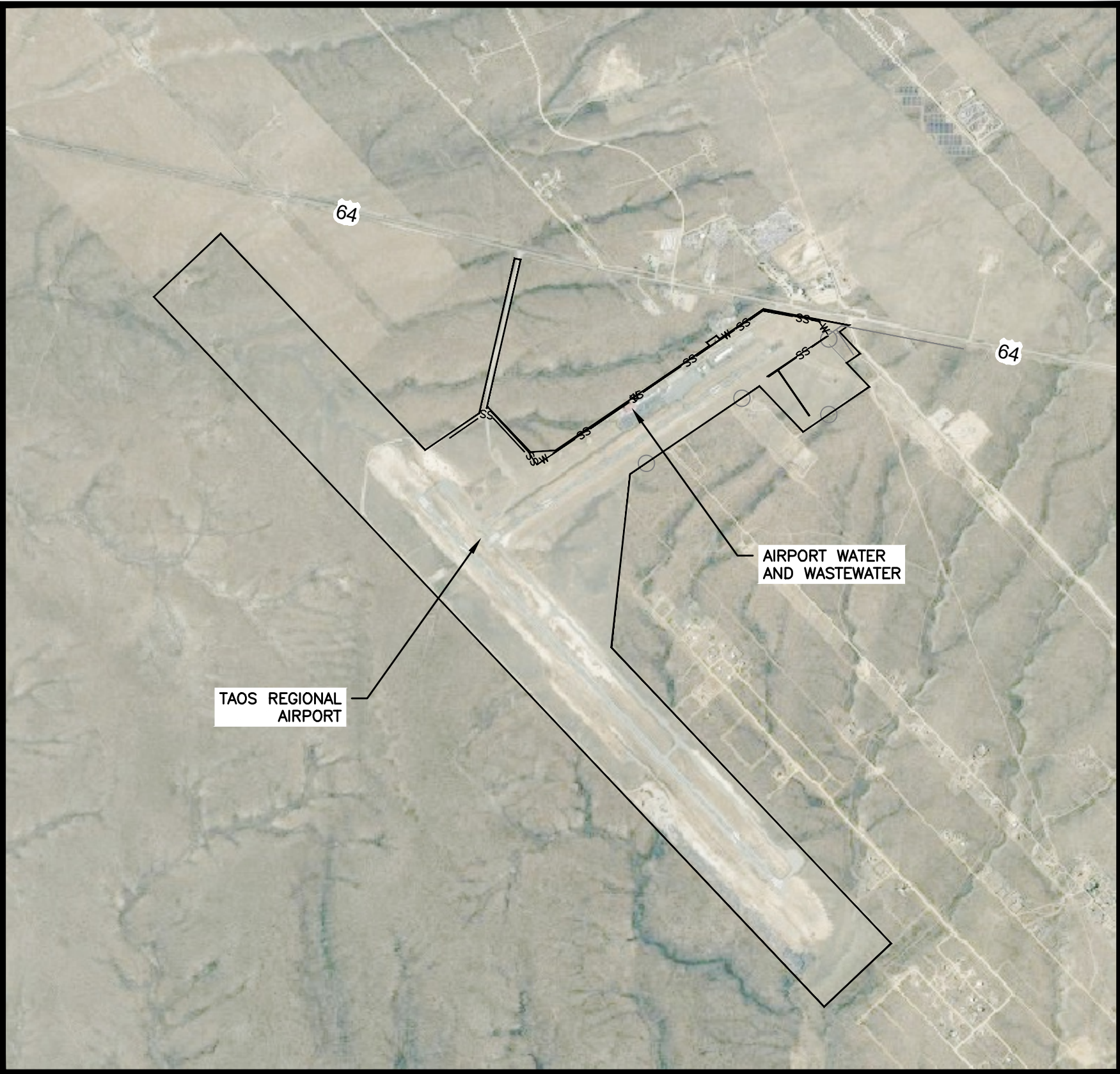
\\DATA\AQ\DATA\PROJECTS\DB21.1270\_TAOs\_AIRPORT-ABEYTA\_CONSTRUCTION\CAD\PRODUCTION\ON SITE UTILITIES\_G-0 TITLE SHEET & G-1 GEN NOTES.DWG May 8, 2025 -- 2:14 PM BY: ALEX NUNEZ-THOMPSON



VICINITY MAP  
NTS

# TAOS REGIONAL AIRPORT WATER AND WASTEWATER UTILITIES

PREPARED FOR  
TOWN OF TAOs



SITE MAP  
NTS

## INDEX OF DRAWINGS

## REVISION

GENERAL			
1	G-0	COVER SHEET AND INDEX	0
2	G-1	GENERAL NOTES AND LEGEND	0
CIVIL			
3	C-1	OVERALL SITE PLAN & SURVEY CONTROL	0
4	C-1A	PLAT INFORMATION	0
5	C-2A	WATER AND WASTEWATER SITE PLAN	0
6	C-2B	PLAN AND PROFILE INDEX	0
7	C-3	PLAN AND PROFILE 1 - WATER	0
8	C-4	PLAN AND PROFILE 2 - WATER	0
9	C-5	PLAN AND PROFILE 3 - WATER	0
10	C-6	PLAN AND PROFILE 4 - WATER	0
11	C-7	PLAN AND PROFILE 5 - WATER	0
12	C-8	PLAN AND PROFILE 6 - WATER	0
13	C-9	PLAN AND PROFILE 7 - WATER	0
14	C-10	PLAN AND PROFILE 8 - SEWER	0
15	C-11	PLAN AND PROFILE 9 - SEWER	0
16	C-12	PLAN AND PROFILE 10 - SEWER	0
17	C-13	PLAN AND PROFILE 11 - SEWER	0
18	C-14	PLAN AND PROFILE 12 - SEWER	0
19	C-15	PLAN AND PROFILE 13 - SEWER	0
20	C-16	PLAN AND PROFILE 14 - SEWER	0
21	C-17	WWTP & LEACH FIELD SITE PLAN	0

## INDEX OF DRAWINGS

## REVISION

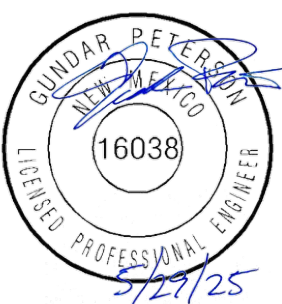
CIVIL			
22	C-18	CIVIL DETAILS 1	0
23	C-19	CIVIL DETAILS 2	0
24	C-20	CIVIL DETAILS 3	0
25	C-21	CIVIL DETAILS 4	0
26	C-22	CIVIL DETAILS 5	0
27	C-23	CIVIL DETAILS 6	0
28	C-24	CIVIL DETAILS 7	0
29	C-25	CONSTRUCTION SAFETY & PHASING PLAN	0
ELECTRICAL			
30	E-1	ELECTRICAL LEGEND AND NOTES	0
31	E-2	OVERALL ELECTRICAL SITE PLAN	0
32	E-3	GRINDER STATION & WWTP - POWER RISER DIAGRAMS & DETAILS	0
33	E-4	GRINDER STATION & WWTP - ELECTRICAL DIAGRAMS	0

CONTACTS  
MARK FLORES, ASSISTANT TOWN MANAGER  
ALEX NUNEZ-THOMPSON, DBS&A

(575) 751-2047  
(505) 822-9400

REV. NO.	DATE	DESCRIPTION	APPROVED BY
0	05/03/25	ISSUED FOR BID	GP

DATE OF ISSUE: 05/03/25
DESIGNED BY: ANT
DRAWN BY: RT, ANT
CHECKED BY: GP
APPROVED BY: GP



TOWN OF TAOs  
TAOS COUNTY, NEW MEXICO  
EDA 08-79-05544

TAOS REGIONAL AIRPORT WATER  
AND WASTEWATER UTILITIES  
TAOS COUNTY, NM  
COVER SHEET AND INDEX

SHEET 1 OF 33  
DWG NO. G-0

JOB NO.  
DB21.1270



\\DATA\AQ\DATAS\PROJECTS\DB21.1270\TAOS.CONSTRUCTION\CAD\PRODUCTION\ON SITE UTILITIES\_G-0 TITLE SHEET & G-1 GEN NOTES.DWG May 8, 2025 - 2:14 PM BY: ALEX NUÑEZ--THOMPSON

GENERAL CONSTRUCTION NOTES:

- A. ALL WORK ON THIS PROJECT SHALL BE PERFORMED IN ACCORDANCE WITH APPLICABLE FEDERAL, STATE AND LOCAL LAWS, ORDINANCES, AND REGULATIONS CONCERNING CONSTRUCTION SAFETY AND HEALTH.
- B. THE CONTRACTOR IS RESPONSIBLE FOR OBTAINING ALL REQUIRED CONSTRUCTION PERMITS AND APPROVALS OF LIKE KIND PRIOR TO START OF CONSTRUCTION.
- C. CONTRACT DOCUMENTS CONSIST OF THESE DRAWINGS, PROJECT SPECIFICATIONS, PROJECT CONTRACTS, AND ANY AND ALL SUBSEQUENT EXECUTED PROJECT DOCUMENTATION ISSUED AS, OR WITH, CHANGE ORDERS, AND RFI'S (REQUEST FOR INFORMATION.) THE CONTRACTOR SHALL REVIEW ALL PROJECT DOCUMENTS AND VERIFY ALL DIMENSIONS, QUANTITIES, AND FIELD CONDITIONS. ANY CONFLICTS OR OMISSIONS WITH THE DOCUMENTS SHALL BE REPORTED TO THE ENGINEER/PROJECT MANAGER FOR CLARIFICATION PRIOR TO PERFORMANCE OF ANY WORK IN QUESTION. IN THE EVENT THE CONTRACTOR DOES NOT NOTIFY THE ENGINEER/PROJECT MANAGER, THE CONTRACTOR ASSUMES FULL RESPONSIBILITY AND ANY AND ALL EXPENSE FOR ANY REVISIONS NECESSARY OR CORRECTIONAL WORK REQUIRED.
- D. EXISTING BURIED UTILITIES SHALL BE VERIFIED BY THE CONTRACTOR PRIOR TO CONSTRUCTION. THE CONTRACTOR SHALL USE ANY MEANS APPROVED BY THE ENGINEER/PROJECT MANAGER TO LOCATE UNDERGROUND UTILITIES INCLUDING, BUT NOT LIMITED TO, ELECTRONIC LOCATING EQUIPMENT AND/OR POT HOLING. ANY DAMAGE TO ANY OTHER UTILITIES AND/OR COLLATERAL DAMAGE CAUSED BY THE CONTRACTOR SHALL BE THE FULL RESPONSIBILITY OF THE CONTRACTOR.
- E. EXISTING FENCING THAT IS NOT DESIGNATED FOR REMOVAL SHALL NOT BE DISTURBED. ANY FENCING THAT IS DISTURBED OR ALTERED BY THE CONTRACTOR SHALL BE RESTORED TO ITS ORIGINAL CONDITION AT THE CONTRACTOR'S EXPENSE. IF THE CONTRACTOR DESIRES TO REMOVE FENCING TO ACCOMMODATE CONSTRUCTION ACTIVITIES, THE CONTRACTOR SHALL OBTAIN THE OWNER'S WRITTEN PERMISSION BEFORE FENCE IS REMOVED. CONTRACTOR SHALL RESTORE THE FENCE TO ITS ORIGINAL CONDITION AT THE EARLIEST OPPORTUNITY TO THE SATISFACTION OF THE OWNER. WHILE ANY FENCING IS REMOVED, THE CONTRACTOR SHALL BE SOLELY RESPONSIBLE FOR SECURITY OF THE SITE UNTIL THE FENCE IS RESTORED.
- F. AT THE END OF EACH WORK DAY, THE CONTRACTOR SHALL CLEAN AND PICK UP THE WORK AREA TO THE SATISFACTION OF THE ENGINEER/PROJECT MANAGER. AT NO TIME SHALL THE WORK BE LEFT IN A MANNER THAT COULD ENDANGER THE WORKERS OR THE PUBLIC.
- G. ALL MATERIALS AND WORKMANSHIP SHALL CONFORM TO PROJECT SPECIFICATIONS AND PLANS, AS AMENDED AND REVISED BY THE ENGINEER. ALL INSTALLATION DETAILS ARE TYPICAL AND MAY BE CHANGED TO BETTER FIT EXISTING LOCAL CONDITIONS UPON APPROVAL BY THE ENGINEER.
- H. ONLY THE CONTRACTOR SHALL BE RESPONSIBLE FOR SAFETY OF ALL WORK. ALL WORK, INCLUDING WORK WITHIN TRENCHES, SHALL BE IN ACCORDANCE WITH THE OCCUPATIONAL SAFETY AND HEALTH ACT (OSHA).
- I. REFERENCES MADE TO STANDARD SPECIFICATIONS AND STANDARD DRAWINGS REFER TO THE NEW MEXICO CHAPTER OF THE AMERICAN PUBLIC WORKS ASSOCIATION (APWA--NM) STANDARDS FOR PUBLIC WORKS CONSTRUCTION.
- J. THE CONTRACTOR SHALL NOT INSTALL ITEMS AS SHOWN ON THESE PLANS WHEN IT IS OBVIOUS THAT FIELD CONDITIONS ARE DIFFERENT THAN SHOWN IN THE PLANS. SUCH CONDITIONS SHALL BE BROUGHT TO THE ATTENTION OF THE ENGINEER IN A TIMELY MANNER. IN THE EVENT THE CONTRACTOR DOES NOT NOTIFY THE ENGINEER IN A TIMELY MANNER, THE CONTRACTOR ASSUMES FULL RESPONSIBILITY AND EXPENSE FOR ANY REVISIONS NECESSARY, INCLUDING ENGINEERING DESIGN FEES.
- K. EXISTING SITE IMPROVEMENTS WHICH ARE DAMAGED OR DISPLACED BY THE CONTRACTOR SHALL BE REMOVED AND REPLACED BY THE CONTRACTOR AT THE CONTRACTOR'S EXPENSE. REPAIRS SHALL BE APPROVED BY THE OWNER PRIOR TO CONSTRUCTION OF THE REPAIRS. REPAIRS SHALL BE ACCEPTED BY THE OWNER PRIOR TO FINAL PAYMENT.

WORK WITHIN ADJACENT RIGHT-OF-WAY

- L. PRIOR TO BEGINNING ANY CONSTRUCTION ACTIVITIES WITHIN ADJACENT RIGHT-OF-WAYS OR WITHIN PROPERTY NOT OWNED BY THE OWNER OF THE PROJECT SITE, THE CONTRACTOR SHALL ASSURE THAT ALL PERMITS AND PERMISSIONS REQUIRED HAVE BEEN OBTAINED IN WRITING.

SURVEY MONUMENTS, PROPERTY CORNERS, BENCHMARKS

- M. THE CONTRACTOR SHALL NOTIFY THE OWNER AT LEAST SEVEN (7) DAYS BEFORE BEGINNING ANY CONSTRUCTION ACTIVITY THAT COULD DAMAGE OR DISPLACE SURVEY MONUMENTS, PROPERTY CORNERS, OR PROJECT BENCHMARKS SO THESE ITEMS MAY BE RELOCATED.
- N. ANY SURVEY MONUMENTS, PROPERTY CORNERS, OR BENCHMARKS THAT ARE NOT IDENTIFIED FOR RELOCATION ARE THE RESPONSIBILITY OF THE CONTRACTOR TO PRESERVE AND PROTECT, RELOCATION OR REPLACEMENT OF THESE ITEMS SHALL BE DONE BY THE OWNER'S SURVEYOR AT THE EXPENSE OF THE CONTRACTOR.

DESIGN SURVEY

- O. DESIGN SURVEY WAS PERFORMED BY WILSON AND COMPANY IN OCTOBER 2021. PRIMARY PROJECT CONTROL POINTS WERE SET AND OBSERVED UTILIZING GPS RTK.
- NEW MEXICO STATE PLANE GROUND COORDINATES – NAD 83, CENTRAL ZONE
- VERTICAL DATUM: NAVD 88
- GEOID MODEL: GEOID 18
- COORDINATES AND ELEVATIONS EXPRESSED IN U.S. SURVEY FEET

PAVEMENT

- P. WHEN ABUTTING NEW PAVEMENT TO EXISTING PAVEMENT, CUT EXISTING PAVEMENT EDGE TO A NEAT, STRAIGHT LINE AS NECESSARY TO REMOVE ANY BROKEN OR CRACKED PAVEMENT AND MATCH NEW PAVEMENT ELEVATION TO EXISTING.
- Q. ALL UTILITIES AND UTILITY SERVICE LINES SHALL BE INSTALLED AND APPROVED PRIOR TO PAVING.

CONSTRUCTION LIMITS

- R. SHALL BE AS SHOWN ON PLANS.

UTILITIES

- S. UTILITY LINES, PIPELINES, OR UNDERGROUND UTILITY LINES SHOWN ON THESE DRAWINGS ARE SHOWN IN AN APPROXIMATE LOCATION ONLY BASED ON THE INFORMATION PROVIDED TO THE ENGINEER BY OTHERS. THIS INFORMATION MAY BE INACCURATE OR INCOMPLETE. ADDITIONALLY, UNDERGROUND LINES MAY EXIST THAT ARE NOT SHOWN. THE CONTRACTOR SHALL VERIFY THE LOCATION OF ANY UTILITY LINE, PIPELINE, OR UNDERGROUND UTILITY LINE IN OR NEAR THE AREA OF THE WORK IN ACCORDANCE WITH CHAPTER 62, ARTICLE 14-1, THROUGH 14-10, NMSA 1978.
- T. THE CONTRACTOR SHALL CONTACT THE STATEWIDE UTILITY LOCATOR SERVICE AT 811 AT LEAST FIVE WORKING DAYS BEFORE BEGINNING CONSTRUCTION. AFTER THE UTILITIES ARE SPOTTED, THE CONTRACTOR SHALL EXPOSE ALL PERTINENT UTILITIES TO VERIFY THEIR VERTICAL AND HORIZONTAL LOCATION. IF A CONFLICT EXISTS BETWEEN EXISTING UTILITIES AND PROPOSED CONSTRUCTION, THE CONTRACTOR SHALL NOTIFY THE ENGINEER SO THAT THE CONFLICT CAN BE RESOLVED WITH MINIMAL DELAY.
- U. THE CONTRACTOR SHALL EXERCISE DUE CARE TO AVOID DISTURBING ANY EXISTING UTILITIES, ABOVE OR BELOW GROUND. UTILITIES THAT ARE DAMAGED BY CARELESS CONSTRUCTION SHALL BE REPAIRED OR REPLACED AT THE CONTRACTOR'S EXPENSE.
- V. THE CONTRACTOR SHALL COORDINATE ANY REQUIRED UTILITY INTERRUPTIONS WITH THE OWNER AND AFFECTED UTILITY COMPANY A MINIMUM OF FIVE (5) WORKING DAYS BEFORE THE INTERRUPTION.
- W. THE CONTRACTOR SHALL MAINTAIN A RECORD DRAWING SET OF PLANS AND PROMPTLY LOCATE ALL UTILITIES, EXISTING OR NEW, IN THEIR CORRECT LOCATION, HORIZONTAL AND VERTICAL. THIS RECORD SET OF DRAWINGS SHALL BE MAINTAINED ON THE PROJECT SITE AND SHALL BE AVAILABLE TO THE OWNER AND ENGINEER AT ANY TIME DURING CONSTRUCTION. RECORD INFORMATION SHALL INCLUDE HORIZONTAL AND VERTICAL COORDINATE CALLOUTS, LINE SIZES, LINE TYPES, BURIAL DEPTHS, AND ALL OTHER PERTINENT INSTALLATION INFORMATION. IN ADDITION ALL ITEMS THAT ARE INSTALLED EXACTLY AS DESIGNED SHALL BE NOTED AS SUCH.

EROSION CONTROL, ENVIRONMENTAL PROTECTION, AND STORM WATER POLLUTION PREVENTION PLAN

- X. THE CONTRACTOR SHALL CONFORM TO ALL TAOS COUNTY, STATE OF NEW MEXICO, AND FEDERAL DUST AND EROSION CONTROL REGULATIONS. THE CONTRACTOR SHALL PREPARE AND OBTAIN ANY DUST CONTROL OR EROSION CONTROL PERMITS FROM THE APPROPRIATE REGULATORY AGENCIES PRIOR TO CONSTRUCTION.
- Y. THE CONTRACTOR SHALL PROMPTLY REMOVE OR STABILIZE ANY MATERIAL EXCAVATED WITHIN THE RIGHT-OF-WAY OR ADJACENT PROPERTY TO KEEP IT FROM WASHING OFF THE PROJECT SITE.
- Z. THE CONTRACTOR SHALL ENSURE THAT NO SOIL ERODES FROM THE SITE ONTO ADJACENT PROPERTY BY CONSTRUCTION OF TEMPORARY EROSION CONTROL BERMS OR INSTALLING SILT FENCES AT THE PROPERTY LINES (OR LIMITS OF CONSTRUCTION WHERE DESIGNATED) AND WETTING SOIL TO PREVENT IT FROM BLOWING.
- AA. WATERING, AS REQUIRED FOR CONSTRUCTION DUST CONTROL, SHALL BE CONSIDERED INCIDENTAL TO CONSTRUCTION AND NO MEASUREMENT OR PAYMENT SHALL BE MADE. CONSTRUCTION AREAS SHALL BE WATERED FOR DUST CONTROL IN COMPLIANCE WITH TOWN, COUNTY AND STATE ORDINANCES. THE CONTRACTOR SHALL BE RESPONSIBLE FOR COORDINATING WITH THE TOWN OF TAOS FOR AVAILABILITY AND USE OF WATER. THE CONTRACTOR SHALL BE RESPONSIBLE FOR SUPPLYING ALL EQUIPMENT AND MATERIALS NECESSARY FOR OBTAINING, METERING, AND PAYING FOR WATER.
- AB. THE CONTRACTOR SHALL PROPERLY HANDLE AND DISPOSE OF ALL ASPHALT AND CONCRETE REMOVED ON THE PROJECT BY HAULING TO AN APPROVED DISPOSAL SITE IN ACCORDANCE WITH THE REQUIREMENTS OF TAOS COUNTY.
- AC. ALL WASTE PRODUCTS FROM THE CONSTRUCTION SITE, INCLUDING ITEMS DESIGNED FOR REMOVAL, CONSTRUCTION WASTE, CONSTRUCTION EQUIPMENT WASTE PRODUCTS (OIL, GAS, TIRES, ETC.), DRILLING MUD AND WATER, GARBAGE, GRUBBING, EXCESS CUT MATERIAL, VEGETATIVE DEBRIS, ETC. SHALL BE APPROPRIATELY DISPOSED OF OFFSITE AT NO ADDITIONAL COST TO THE OWNER. IT SHALL BE THE CONTRACTOR'S RESPONSIBILITY TO OBTAIN ANY PERMITS REQUIRED FOR HAUL OR DISPOSAL OF WASTE PRODUCTS. IT SHALL BE THE CONTRACTOR'S RESPONSIBILITY TO ENSURE THAT THE WASTE DISPOSAL SITE COMPLIES WITH APPROPRIATE REGULATIONS REGARDING THE ENVIRONMENT, ENDANGERED SPECIES, AND ARCHAEOLOGICAL RESOURCES.
- AD. THE CONTRACTOR SHALL BE RESPONSIBLE FOR THE CLEANUP AND REPORTING OF SPILLS OF HAZARDOUS MATERIALS ASSOCIATED WITH THE CONSTRUCTION SITE. HAZARDOUS MATERIALS INCLUDES GASOLINE, DIESEL FUEL, MOTOR OIL, SOLVENTS, CHEMICALS, PAINT, ETC. WHICH MAY BE A THREAT TO THE ENVIRONMENT. THE CONTRACTOR SHALL REPORT THE DISCOVERY OF PAST OR PRESENT SPILLS TO THE NEW MEXICO HAZARDOUS WASTE BUREAU AT 1-505-476-6000 AND THE ENGINEER.
- AE. THE CONTRACTOR SHALL COMPLY WITH ALL APPLICABLE REGULATIONS CONCERNING SURFACE AND UNDERGROUND WATER. CONTACT WITH SURFACE WATER BY CONSTRUCTION EQUIPMENT AND PERSONNEL SHALL BE MINIMIZED. EQUIPMENT MAINTENANCE AND REFUELING OPERATIONS SHALL BE PERFORMED IN AN ENVIRONMENTALLY SAFE MANNER IN COMPLIANCE WITH TOWN, COUNTY, STATE, AND EPA REGULATIONS.
- AF. THE CONTRACTOR SHALL COMPLY WITH ALL APPLICABLE REGULATIONS CONCERNING CONSTRUCTION NOISE AND HOURS OF OPERATION AS STATED IN THE SPECIFICATIONS OR IMPOSED BY THE OWNER, TOWN OR COUNTY AUTHORITIES.

TRAFFIC CONTROL

- AG. THE CONTRACTOR SHALL PROVIDE ALL REQUIRED TRAFFIC CONTROL PLANS AND TRAFFIC CONTROL EQUIPMENT. ALL SIGNS, BARRICADES, CHANNELIZATION DEVICES, SIGN FRAMES AND ERECTION OF SUCH DEVICES SHALL CONFORM TO THE REQUIREMENTS OF "MANUAL OF UNIFORM TRAFFIC CONTROL DEVICES FOR STREETS AND HIGHWAYS" LATEST EDITION. TRAFFIC CONTROL PLANS SHALL BE APPROVED BY THE COUNTY AND NMDOT PRIOR TO CONSTRUCTION.

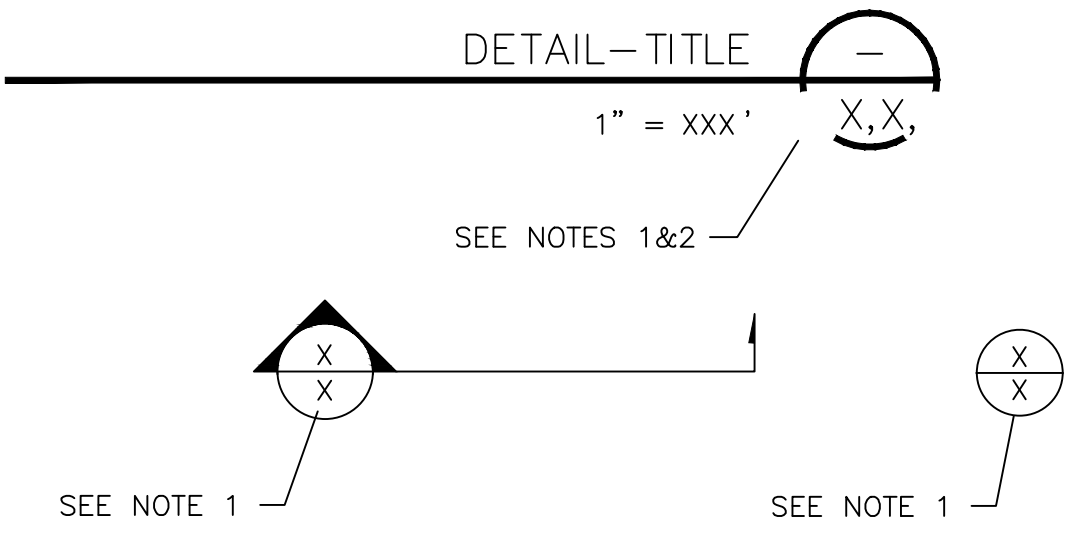
RECORD SURVEY

- AH. THE CONTRACTOR SHALL PROVIDE RECORD SURVEY, BY A NEW MEXICO LICENSED SURVEYOR, PROVIDED AS INSTALLED LOCATIONS FOR PIPELINES, TANK, BUILDINGS AND STRUCTURES INCLUDING PIPELINE LOCATIONS EVERY 1000' MINIMUM, VALVES AND APPURTENANCES AND CHANGES IN DIRECTION.

MISCELLANEOUS SYMBOLS:

	AIRPORT PROPERTY LINE
	RIGHT-OF-WAY
	CHAIN LINK FENCE
	EXISTING WATERLINE
	FUTURE WATERLINE
	EXISTING SANITARY SEWER LINE
	FUTURE WASTEWATER LINE
	FUTURE LPSS LINE
	FIBER OPTIC LINE
	TELEPHONE LINE
	OVERHEAD ELECTRICAL LINE
	UNDERGROUND ELECTRICAL LINE
	GAS LINE
	CMP CULVERT/BORING
	EXISTING BARBED WIRE FENCE
	EXISTING CHAINLINK FENCE
	WINDCONE
	EXISTING FIBER OPTIC JUNCTION BOX
	EXISTING ELECTRICAL METER
	EXISTING GAS METER
	EXISTING COMMUNICATIONS JUNCTION BOX
	DIAMETER
	GRAVEL
	FIRE HYDRANT
	AIR RELEASE VALVE
	PROPOSED VALVE

LEGEND:



NOTES:

1. IF SECTION, DETAIL, SCHEMATIC, OR DIAGRAM IS DRAWN ON THE SAME SHEET THAT IT IS TAKEN FROM, THE SHEET NUMBER SHALL BE REPLACED WITH A HYPHEN.
2. IF THE SECTION, DETAIL, SCHEMATIC, OR DIAGRAM IS REFERENCED ON MULTIPLE SHEETS, ALL SHEETS SHOULD BE LISTED TO THE OUTSIDE RIGHT OF THE DETAIL-TITLE BUBBLE, AND SEPARATED WITH A COMMA.

ABBREVIATIONS:

AGS	ABOVE GROUND SURFACE
APPROX.	APPROXIMATE
ARV	AIR RELEASE VALVE
BGS	BELOW GROUND SURFACE
DEG	DEGREE
CMP	CORRUGATED METAL PIPE
CONC	CONCRETE
DIA	DIAMETER
DWG	DRAWING
ELEV	ELEVATION
FT	FEET
FT. MSL	FEET ABOVE MEAN SEA LEVEL
FFE	FINISHED FLOOR ELEVATION
GPD	GALLONS PER DAY
GPM	GALLONS PER MINUTE
GV	GATE VALVE
HDPE	HIGH-DENSITY POLYEHTYLENE
HOR	HORIZONTAL
HWY	HIGHWAY
INV	INVERT ELEVATION
LF	LINEAR FEET
LPSS	LOW PRESSURE SANITARY SEWER
MAX	MAXIMUM
MIN	MINIMUM
MSL	MEAN SEA LEVEL
N/A	NOT APPLICABLE
NMDOT	NEW MEXICO DEPARTMENT OF TRANSPORTATION
NPT	NATIONAL PIPE THREAD
NTS	NOT TO SCALE
OC	ON CENTER
OD	OUTER DIAMETER
PVC	POLYVINYL CHLORIDE
P/L	PROPERTY LINE
PSI	POUNDS PER SQUARE INCH
ROW	RIGHT OF WAY
SAS	SANITARY SEWER
SCH	SCHEDULE
SDR	STANDARD DIMENSION RATIO
STA	STATION
STD	STANDARD
TYP	TYPICAL
VERT	VERTICAL
W	WIDTH
W/	WITH
W/O	WITHOUT
WL	WATER LINE
P&P	PLAN AND PROFILE
PVI	POINT OF VERTICAL INFLECTION
PVT	POINT OF VERTICAL TANGENT
WWTP	WASTEWATER TREATMENT PLANT

REV. NO.	DATE	DESCRIPTION	APPROVED BY
0	05/03/25	ISSUED FOR BID	GP

DATE OF ISSUE:	05/03/25
DESIGNED BY:	ANT
DRAWN BY:	RT, ANT
CHECKED BY:	GP
APPROVED BY:	GP



**DBS&A**  
a Geo-Logic Company  
6501 Americas Parkway NE Suite 200  
Albuquerque, NM 87110



TOWN OF TAOS  
TAOS COUNTY, NEW MEXICO  
EDA 08-79-05544

TAOS REGIONAL AIRPORT WATER  
AND WASTEWATER UTILITIES  
TAOS COUNTY, NM  
GENERAL NOTES

SHEET 2 OF 33  
DWG NO. G-1  
JOB NO.  
DB21.1270



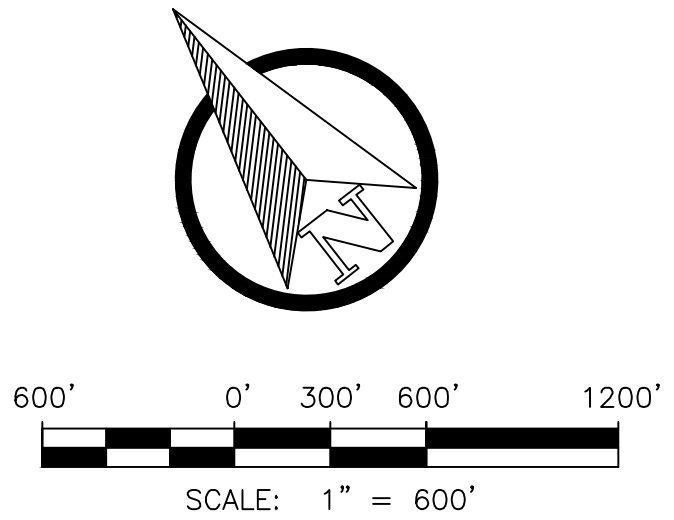
\\DATA\ASB\DATA\PROJECTS\DB21.1270\_TAO Regional Airport\ABETA\_CONSTRUCTION\CAD\PRODUCTION\ON SITE UTILITIES\C-1 SITE PLAN AND SURVEY CONTROL.DWG May 8, 2025 - 2:14 PM BY: ALEX NUÑEZ-THOMPSON



Point Table				
Point #	Northing	Easting	Elevation	Description
1	1988144.54	1811985.75	7075.30	TAOSPORT
2	1989035.56	1813299.48	7092.02	TAOSPORT_AZ_MK
3	1986437.82	1809096.96	7055.02	SKXA
4	1988730.11	1812677.99	7082.63	100
5	1987646.63	1811101.80	7066.05	101
6	1986936.20	1810048.50	7060.47	102
11	1978454.74	1814194.02	6995.25	PP-124
12	1981000.76	1811790.83	7052.02	PP-129
13	1983779.01	1809168.32	7050.37	PP-134

LEGEND:  
○ DENOTES SURVEY CONTROL POINTS

- SURVEY NOTES:
1. DESIGN SURVEY WAS PERFORMED BY WILSON AND COMPANY IN OCTOBER 2021. PRIMARY PROJECT CONTROL POINTS WERE SET AND OBSERVED UTILIZING GPS RTK.
  2. NEW MEXICO STATE PLANE GROUND COORDINATES – NAD 83, CENTRAL ZONE
  3. VERTICAL DATUM: NAVD 88
  4. GEOID MODEL: GEOID 18
  5. COORDINATES AND ELEVATIONS EXPRESSED IN U.S. SURVEY FEET

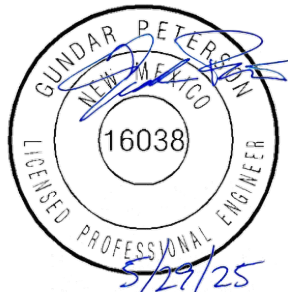


REV. NO.	DATE	DESCRIPTION	APPROVED BY
0	05/03/25	ISSUED FOR BID	GP

DATE OF ISSUE: 05/03/25  
DESIGNED BY: ANT  
DRAWN BY: RT, ANT  
CHECKED BY: GP  
APPROVED BY: GP



**DBS&A**  
a Geo-Logic Company  
6501 Americas Parkway NE Suite 200  
Albuquerque, NM 87110



TOWN OF TAO  
TAOS COUNTY, NEW MEXICO  
EDA 08-79-05544

TAOS REGIONAL AIRPORT WATER  
AND WASTEWATER UTILITIES  
TAOS COUNTY, NM

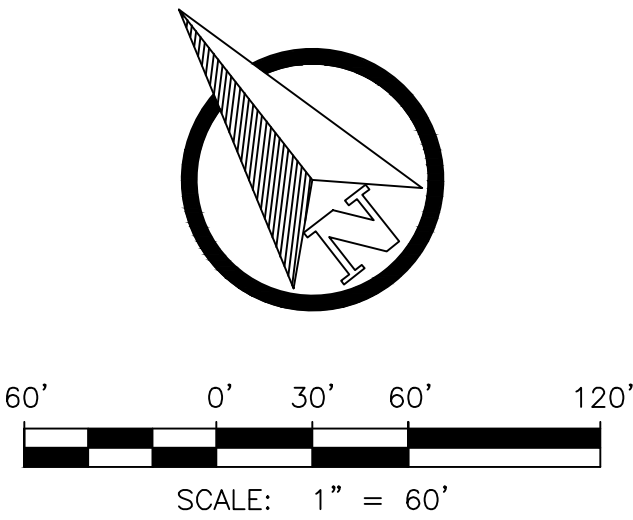
OVERALL SITE PLAN & SURVEY CONTROL

SHEET 3 OF 33  
DWG NO. C-1

JOB NO.  
DB21.1270



\\DATA\ASB\DATA\PROJECTS\0821.1270\_TAOs\_AIRPORT-ABETTA\_CONSTRUCTION\CAD\PRODUCTION\ON SITE UTILITIES\C-1A SITE PLAN PLAT INFO.DWG May 8, 2025 - 2:14 PM BY: ALEX NÚÑEZ-THOMPSON



REV. NO.	DATE	DESCRIPTION	APPROVED BY
0	05/03/25	ISSUED FOR BID	GP

DATE OF ISSUE:	05/03/25
DESIGNED BY:	ANT
DRAWN BY:	RT, ANT
CHECKED BY:	GP
APPROVED BY:	GP



**DBS&A**  
a Geo-Logic Company  
6501 Americas Parkway NE Suite 200  
Albuquerque, NM 87110



TOWN OF TAOs  
TAOS COUNTY, NEW MEXICO  
EDA 08-79-05544

TAOS REGIONAL AIRPORT WATER  
AND WASTEWATER UTILITIES  
TAOS COUNTY, NM  
PLAT INFORMATION

SHEET 4 OF 33  
DWG NO. C-1A  
JOB NO.  
DB21.1270



\\DATA\ASB\DATA\PROJECTS\DB21.1270\_Taos\_Airport-ABETTA\_CONSTRUCTION\CAD\PRODUCTION\ON SITE UTILITIES\C-2A\_GENERAL WASTEWATER AND WATER STEEPPLAN.DWG May 8, 2025 - 2:14 PM BY: ALEX NUÑEZ-THOMPSON

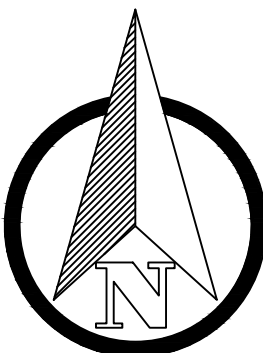


GENERAL NOTES:

1. ALL WORK ON AIRPORT PROPERTY TO BE COORDINATED WITH AIRPORT MANAGER.
2. LPSS LINE TO CONTAIN CLEAN OUT VALVES EVERY 1000 FT PER DETAIL 2, DWG. C-24.
3. LPSS LINE TO CONTAIN AIR RELIEF VALVES EVERY 2,000FT.
4. LPSS LINE TO CONTAIN ISOLATION VALVES AT ALL LATERAL CONNECTIONS.

KEY NOTES:

- ① 8" SDR 14 C900 PVC WATERLINE PER DETAIL 1, DWG. C-18
- ② LPSS LINE PER DETAIL 1, DWG. C-18
- ③ WATERLINE STUB-OUTS FOR FUTURE CONNECTIONS
- ④ LPSS LINE CAPPED FOR FUTURE CONNECTION
- ⑤ LEACH FIELD PER DETAIL 1, DWG. C-22
- ⑥ FUTURE WASTEWATER TREATMENT PLANT (BY OTHERS)



300' 0' 150' 300'  
SCALE: 1" = 300'

REV. NO.	DATE	DESCRIPTION	APPROVED BY
0	05/03/25	ISSUED FOR BID	GP

DATE OF ISSUE: 05/03/25  
DESIGNED BY: ANT  
DRAWN BY: RT, ANT  
CHECKED BY: GP  
APPROVED BY: GP



TOWN OF TAOS  
TAOS COUNTY, NEW MEXICO  
EDA 08-79-05544

TAOS REGIONAL AIRPORT WATER  
AND WASTEWATER UTILITIES  
TAOS COUNTY, NM

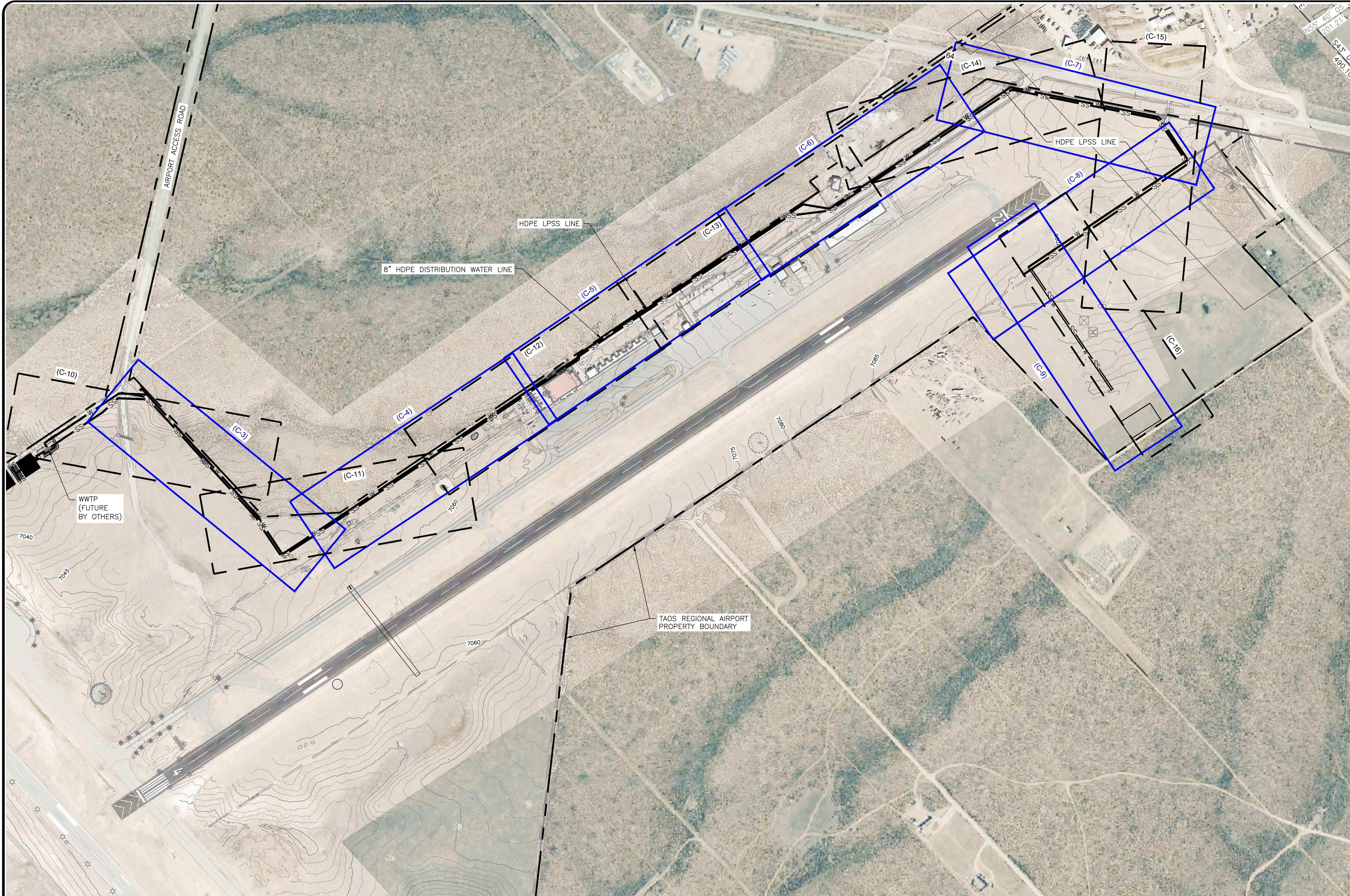
WATER AND WASTEWATER SITE PLAN

SHEET 5 OF 33  
DWG NO. C-2A

JOB NO.  
DB21.1270




\\DATA\ASB\DATA\PROJECTS\0821.1270\_TAOs\_AIRPORT-ABEYTA-CONTRUCTION\CAD\PRODUCTION\ON SITE UTILITIES\C-2B INDEX OF AIRPORT WATER P AND P\SDWG May 8, 2025 - 2:14 PM BY: ALEX NUÑEZ-THOMPSON



- GENERAL NOTES:
1. ALL WORK ON AIRPORT PROPERTY TO BE COORDINATED WITH AIRPORT MANAGER.

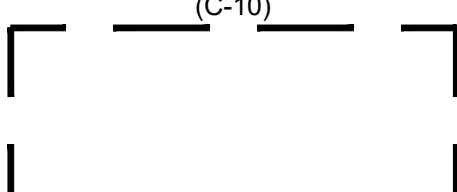
LEGEND:

(C-3)

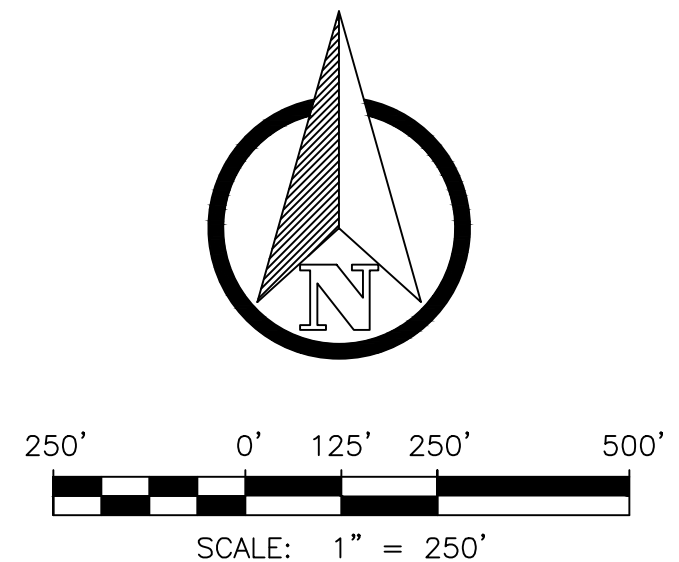


WATER LINE  
P&P SHEET(S)

(C-10)



SEWER LINE  
P&P SHEET(S)

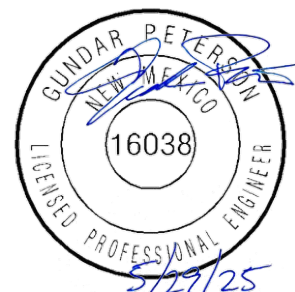


REV. NO.	DATE	DESCRIPTION	APPROVED BY
0	05/03/25	ISSUED FOR BID	GP

DATE OF ISSUE:	05/03/25
DESIGNED BY:	ANT
DRAWN BY:	RT, ANT
CHECKED BY:	GP
APPROVED BY:	GP



**DBS&A**  
a Geo-Logic Company  
6501 Americas Parkway NE Suite 200  
Albuquerque, NM 87110



TOWN OF TAOs  
TAOS COUNTY, NEW MEXICO  
EDA 08-79-05544

TAOS REGIONAL AIRPORT WATER  
AND WASTEWATER UTILITIES  
TAOS COUNTY, NM  
PLAN AND PROFILE INDEX

SHEET 6 OF 33  
DWG NO. C-2B  
JOB NO.  
DB21.1270