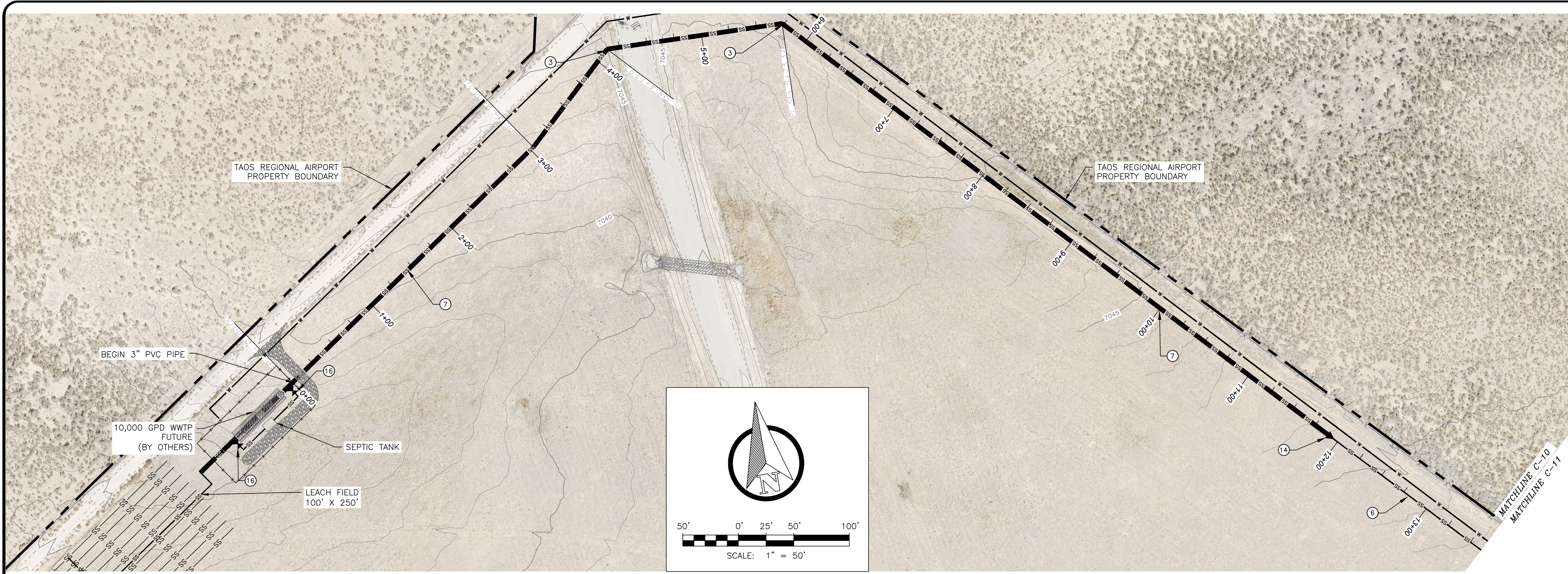
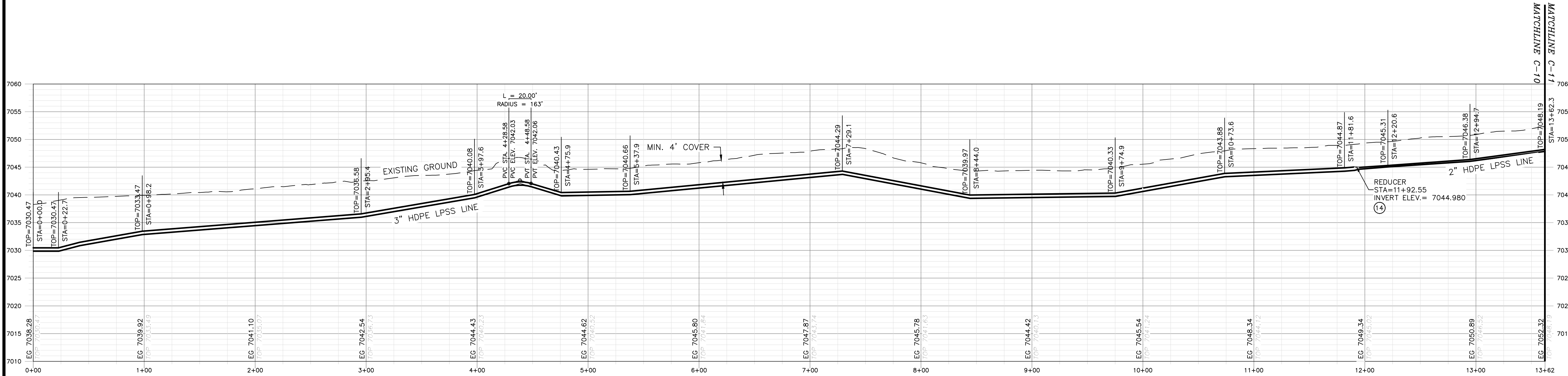


\\DATA\ASB\DATA\PROJECTS\DB21.1270_Taos_Airport_Abetta_Construction\CAD\PRODUCTION\ONSITE UTILITIES\C-10 - SEWER P AND P 8.DWG May 8, 2025 - 2:14 PM BY: ALEX NUÑEZ-THOMPSON



PLAN



PROFILE

HORIZONTAL SCALE: 1"=50'
VERTICAL SCALE: 1"=10'

GENERAL NOTES:

- CLEAR AND GRUB PIPE CORRIDOR (MIN 10' WIDTH) AND GRADE SMOOTH AFTER CONSTRUCTION.
- MINIMUM PIPE BURIAL SHALL BE 4' TO BOTTOM OF PIPE.
- EXISTING UTILITIES SHOWN ARE APPROXIMATE. CONTRACTOR TO CONTACT APPROPRIATE UTILITY JURISDICTION AND POTHOLE EXISTING UTILITIES AS REQUIRED TO AVOID CONFLICTS.
- MAINTAIN 6 FOOT CLEARANCE BETWEEN EXISTING ROAD EDGE OF PAVEMENT AND PIPELINE TRENCH EXCAVATION UNLESS OTHERWISE NOTED.
- PIPELINE CROSSINGS OF ROADWAYS AND DRIVEWAYS SHALL BE IN ACCORDANCE WITH NM PUBLIC WORKS STANDARDS.

KEY NOTES:

- FLUSHING CONNECTIONS TO BE INSTALLED EVERY 1000' PER DETAIL 2, DWG C-24
- STAINLESS STEEL LATERAL KIT INSTALLED AT LATERAL JUNCTIONS BETWEEN GRINDER PUMP AND MAIN LINE PER DETAIL 1, DWG C-21
- AIR/VACUUM RELIEF VALVES PER SPECIFICATIONS PLACED AT INTERVALS OF 2000 FEET PER DETAIL 2, DWG C-20
- LATERAL KIT INSTALLED BETWEEN GRINDER PUMP AND MAIN LINE PER DETAIL 1, DWG C-21
- 1 1/4" HDPE LPSS LATERAL
- 2" HDPE LPSS LINE
- 3" HDPE LPSS LINE
- 90-DEGREE BEND
- 45-DEGREE BEND
- 22.5-DEGREE BEND
- 11.25-DEGREE BEND
- 3" SDR 11 HDPE TEE
- BLIND FLANGE
- 3" X 2" SDR 11 HDPE REDUCER
- 2" SDR 11 HDPE TEE
- ISOLATION VALVE
- POTENTIAL UTILITY CROSSING
- 2" X 1-1/4" SDR 11 HDPE REDUCER
- NEW SEWAGE LIFT STATION PER SPECIFICATIONS. COORDINATE LOCATION WITH OTHERS.

REV. NO.	DATE	DESCRIPTION	APPROVED BY
0	05/03/25	ISSUED FOR BID	GP

DATE OF ISSUE: 05/03/25
DESIGNED BY: ANT
DRAWN BY: RT, ANT
CHECKED BY: GP
APPROVED BY: GP



TOWN OF TAOS
TAOS COUNTY, NEW MEXICO
EDA 08-79-05544

TAOS REGIONAL AIRPORT WATER
AND WASTEWATER UTILITIES
TAOS COUNTY, NM

PLAN AND PROFILE 8 - SEWER

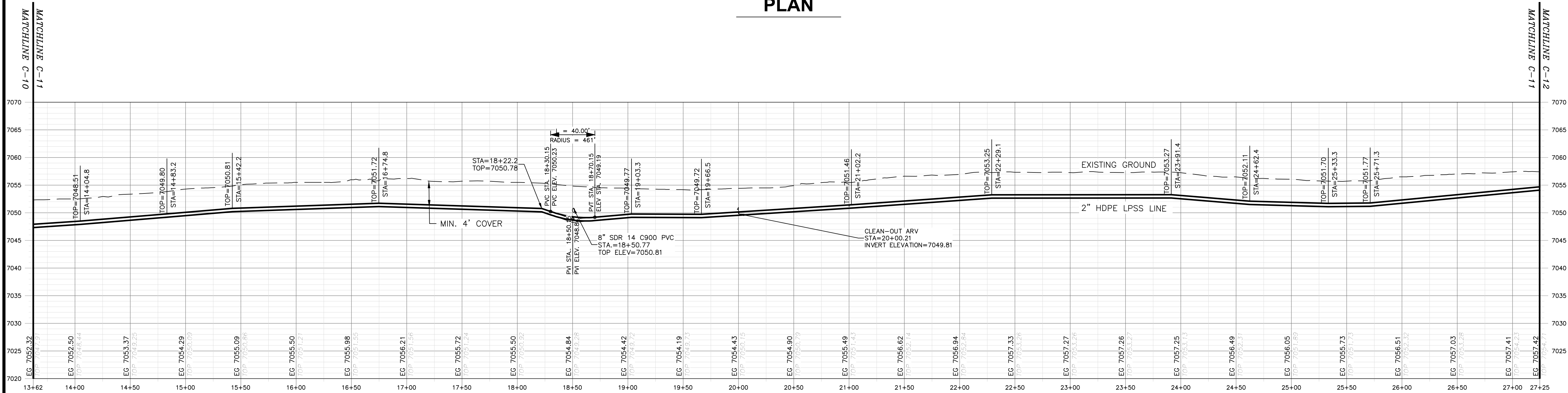
SHEET 14 OF 33
DWG NO. C-10

JOB NO.
DB21.1270

\\DATA\ASB\DATA\PROJECTS\DB21.1270_TAO\TAOS REGIONAL AIRPORT-ABETA-CONSTRUCTION\DWG\PRODUCTION\ON SITE UTILITIES\C-11 - SEWER P AND P 9.DWG May 8, 2025 - 2:14 PM BY: ALEX NUÑEZ-THOMPSON



PLAN



PROFILE

HORIZONTAL SCALE: 1"=50'
VERTICAL SCALE: 1"=10'

GENERAL NOTES:

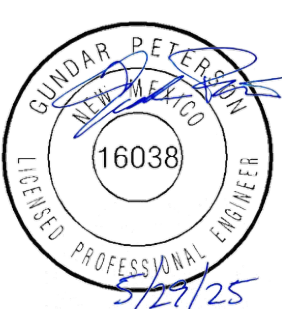
1. CLEAR AND GRUB PIPE CORRIDOR (MIN 10' WIDTH) AND GRADE SMOOTH AFTER CONSTRUCTION.
2. MINIMUM PIPE BURIAL SHALL BE 4' TO BOTTOM OF PIPE.
3. EXISTING UTILITIES SHOWN ARE APPROXIMATE. CONTRACTOR TO CONTACT APPROPRIATE UTILITY JURISDICTION AND POTHOLE EXISTING UTILITIES AS REQUIRED TO AVOID CONFLICTS.
4. MAINTAIN 6 FOOT CLEARANCE BETWEEN EXISTING ROAD EDGE OF PAVEMENT AND PIPELINE TRENCH EXCAVATION UNLESS OTHERWISE NOTED.
5. PIPELINE CROSSINGS OF ROADWAYS AND DRIVEWAYS SHALL BE IN ACCORDANCE WITH NM PUBLIC WORKS STANDARDS.

KEY NOTES:

- ① FLUSHING CONNECTIONS TO BE INSTALLED EVERY 1000' PER DETAIL 2, DWG C-24
- ② STAINLESS STEEL LATERAL KIT INSTALLED AT LATERAL JUNCTIONS BETWEEN GRINDER PUMP AND MAIN LINE PER DETAIL 1, DWG C-21
- ③ AIR/VACUUM RELIEF VALVES PER SPECIFICATIONS PLACED AT INTERVALS OF 2000 FEET PER DETAIL 2, DWG C-20
- ④ LATERAL KIT INSTALLED BETWEEN GRINDER PUMP AND MAIN LINE PER DETAIL 1, DWG C-21
- ⑤ 1 1/4" HDPE LPSS LATERAL
- ⑥ 2" HDPE LPSS LINE
- ⑦ 3" HDPE LPSS LINE
- ⑧ 90-DEGREE BEND
- ⑨ 45-DEGREE BEND
- ⑩ 22.5-DEGREE BEND
- ⑪ 11.25-DEGREE BEND
- ⑫ 3" SDR 11 HDPE TEE
- ⑬ BLIND FLANGE
- ⑭ 3" X 2" SDR 11 HDPE REDUCER
- ⑮ 2" SDR 11 HDPE TEE
- ⑯ ISOLATION VALVE
- ⑰ POTENTIAL UTILITY CROSSING
- ⑱ 2" X 1-1/4" SDR 11 HDPE REDUCER
- ⑲ NEW SEWAGE LIFT STATION PER SPECIFICATIONS. COORDINATE LOCATION WITH OTHERS.

REV. NO.	DATE	DESCRIPTION	APPROVED BY
0	05/03/25	ISSUED FOR BID	GP

DATE OF ISSUE: 05/03/25
DESIGNED BY: ANT
DRAWN BY: RT, ANT
CHECKED BY: GP
APPROVED BY: GP



TOWN OF TAO
TAOS COUNTY, NEW MEXICO
EDA 08-79-05544

TAOS REGIONAL AIRPORT WATER
AND WASTEWATER UTILITIES
TAOS COUNTY, NM

PLAN AND PROFILE 9 - SEWER

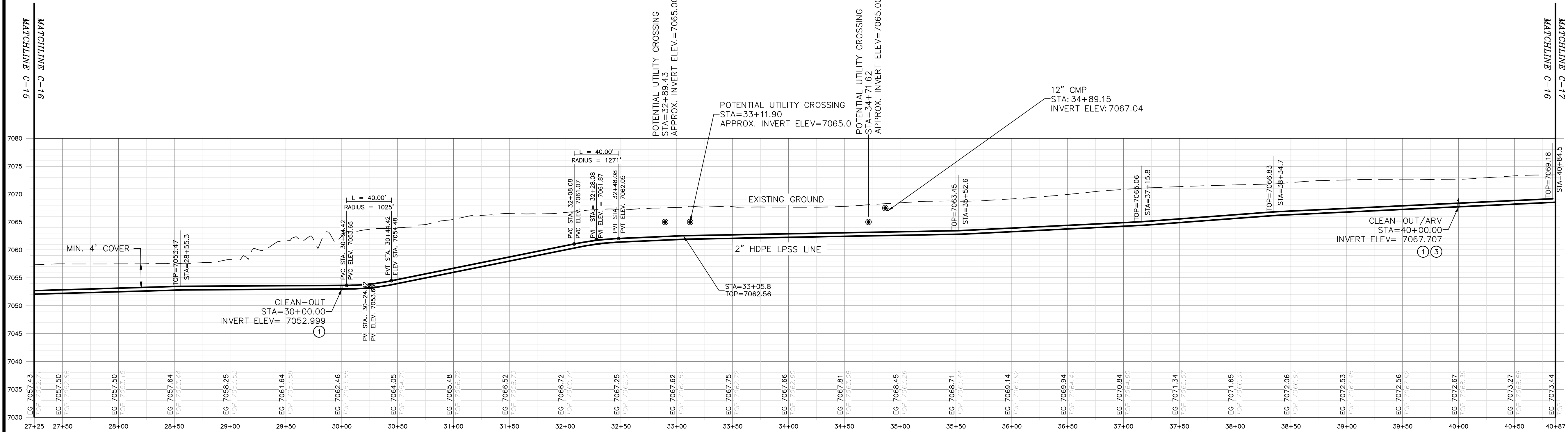
SHEET 15 OF 33
DWG NO. C-11

JOB NO.
DB21.1270

\\DATA\ASB\DATA\PROJECTS\DB21.1270_TAOs_REGIONAL_AIRPORT_WATER_AND_WASTEWATER_UTILITIES\C-12 - SEWER P AND P 10.DWG May 8, 2025 - 2:14 PM BY: ALEX NUNEZ-THOMPSON



PLAN



PROFILE

HORIZONTAL SCALE: 1"=50'
VERTICAL SCALE: 1"=10'

GENERAL NOTES:

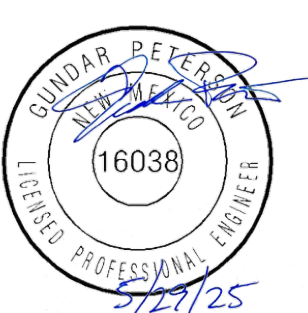
1. CLEAR AND GRUB PIPE CORRIDOR (MIN 10' WIDTH) AND GRADE SMOOTH AFTER CONSTRUCTION.
2. MINIMUM PIPE BURIAL SHALL BE 4' TO BOTTOM OF PIPE.
3. EXISTING UTILITIES SHOWN ARE APPROXIMATE. CONTRACTOR TO CONTACT APPROPRIATE UTILITY JURISDICTION AND POTHOLE EXISTING UTILITIES AS REQUIRED TO AVOID CONFLICTS.
4. MAINTAIN 6 FOOT CLEARANCE BETWEEN EXISTING ROAD EDGE OF PAVEMENT AND PIPELINE TRENCH EXCAVATION UNLESS OTHERWISE NOTED.
5. PIPELINE CROSSINGS OF ROADWAYS AND DRIVEWAYS SHALL BE IN ACCORDANCE WITH NM PUBLIC WORKS STANDARDS.

KEY NOTES:

- ① FLUSHING CONNECTIONS TO BE INSTALLED EVERY 1000' PER DETAIL 2, DWG C-24
- ② STAINLESS STEEL LATERAL KIT INSTALLED AT LATERAL JUNCTIONS BETWEEN GRINDER PUMP AND MAIN LINE PER DETAIL 1, DWG C-21
- ③ AIR/VACUUM RELIEF VALVES PER SPECIFICATIONS PLACED AT INTERVALS OF 2000 FEET PER DETAIL 2, DWG C-20
- ④ LATERAL KIT INSTALLED BETWEEN GRINDER PUMP AND MAIN LINE PER DETAIL 1, DWG C-21
- ⑤ 1 1/4" HDPE LPSS LATERAL
- ⑥ 2" HDPE LPSS LINE
- ⑦ 3" HDPE LPSS LINE
- ⑧ 90-DEGREE BEND
- ⑨ 45-DEGREE BEND
- ⑩ 22.5-DEGREE BEND
- ⑪ 11.25-DEGREE BEND
- ⑫ 3" SDR 11 HDPE TEE
- ⑬ BLIND FLANGE
- ⑭ 3" X 2" SDR 11 HDPE REDUCER
- ⑮ 2" SDR 11 HDPE TEE
- ⑯ ISOLATION VALVE
- ⑰ POTENTIAL UTILITY CROSSING
- ⑱ 2" X 1-1/4" SDR 11 HDPE REDUCER
- ⑲ NEW SEWAGE LIFT STATION PER SPECIFICATIONS. COORDINATE LOCATION WITH OTHERS.

REV. NO.	DATE	DESCRIPTION	APPROVED BY
0	05/03/25	ISSUED FOR BID	GP

DATE OF ISSUE: 05/03/25
DESIGNED BY: ANT
DRAWN BY: RT, ANT
CHECKED BY: GP
APPROVED BY: GP



TOWN OF TAOs
TAOS COUNTY, NEW MEXICO
EDA 08-79-05544

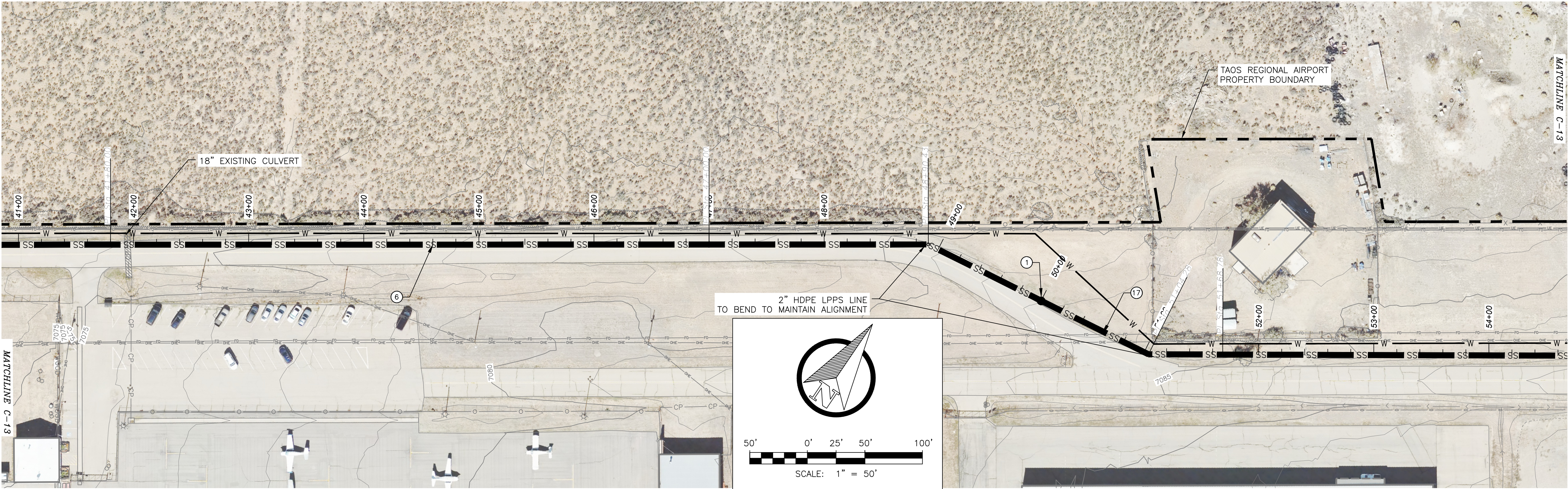
TAOS REGIONAL AIRPORT WATER
AND WASTEWATER UTILITIES
TAOS COUNTY, NM

PLAN AND PROFILE 10 - SEWER

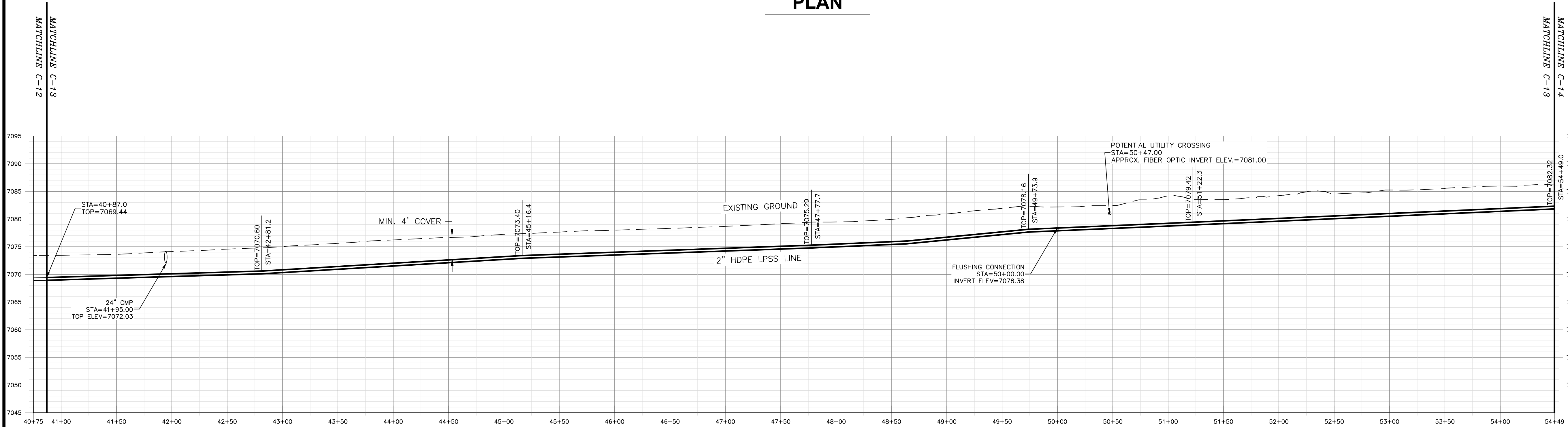
SHEET 16 OF 33
DWG NO. C-12

JOB NO.
DB21.1270

\\DATA\ASB\DATA\PROJECTS\DB21.1270_Taos_Airport\ABETA_CONSTRUCTION\CAD\PRODUCTION\ON SITE UTILITIES\C-13 - SEWER P AND P 11.DWG May 8, 2025 - 2:14 PM BY: ALEX NUNEZ-THOMPSON



PLAN



PROFILE

HORIZONTAL SCALE: 1"=50'
VERTICAL SCALE: 1"=10'

GENERAL NOTES:

1. CLEAR AND GRUB PIPE CORRIDOR (MIN 10' WIDTH) AND GRADE SMOOTH AFTER CONSTRUCTION.
2. MINIMUM PIPE BURIAL SHALL BE 4' TO BOTTOM OF PIPE.
3. EXISTING UTILITIES SHOWN ARE APPROXIMATE. CONTRACTOR TO CONTACT APPROPRIATE UTILITY JURISDICTION AND POTHOLE EXISTING UTILITIES AS REQUIRED TO AVOID CONFLICTS.
4. MAINTAIN 6 FOOT CLEARANCE BETWEEN EXISTING ROAD EDGE OF PAVEMENT AND PIPELINE TRENCH EXCAVATION UNLESS OTHERWISE NOTED.
5. PIPELINE CROSSINGS OF ROADWAYS AND DRIVEWAYS SHALL BE IN ACCORDANCE WITH NM PUBLIC WORKS STANDARDS.

KEY NOTES:

- ① FLUSHING CONNECTIONS TO BE INSTALLED EVERY 1000' PER DETAIL 2, DWG C-24
- ② STAINLESS STEEL LATERAL KIT INSTALLED AT LATERAL JUNCTIONS BETWEEN GRINDER PUMP AND MAIN LINE PER DETAIL 1, DWG C-21
- ③ AIR/VACUUM RELIEF VALVES PER SPECIFICATIONS PLACED AT INTERVALS OF 2000 FEET PER DETAIL 2, DWG C-20
- ④ LATERAL KIT INSTALLED BETWEEN GRINDER PUMP AND MAIN LINE PER DETAIL 1, DWG C-21
- ⑤ 1 1/4" HDPE LPSS LATERAL
- ⑥ 2" HDPE LPSS LINE
- ⑦ 3" HDPE LPSS LINE
- ⑧ 90-DEGREE BEND
- ⑨ 45-DEGREE BEND
- ⑩ 22.5-DEGREE BEND
- ⑪ 11.25-DEGREE BEND
- ⑫ 3" SDR 11 HDPE TEE
- ⑬ BLIND FLANGE
- ⑭ 3" X 2" SDR 11 HDPE REDUCER
- ⑮ 2" SDR 11 HDPE TEE
- ⑯ ISOLATION VALVE
- ⑰ POTENTIAL UTILITY CROSSING
- ⑱ 2" X 1-1/4" SDR 11 HDPE REDUCER
- ⑲ NEW SEWAGE LIFT STATION PER SPECIFICATIONS. COORDINATE LOCATION WITH OTHERS.

REV. NO.	DATE	DESCRIPTION	APPROVED BY
0	05/03/25	ISSUED FOR BID	GP

DATE OF ISSUE: 05/03/25
DESIGNED BY: ANT
DRAWN BY: RT, ANT
CHECKED BY: GP
APPROVED BY: GP



DBS&A
a Geo-Logic Company
6501 Americas Parkway NE Suite 200
Albuquerque, NM 87110



TOWN OF TAOS
TAOS COUNTY, NEW MEXICO
EDA 08-79-05544

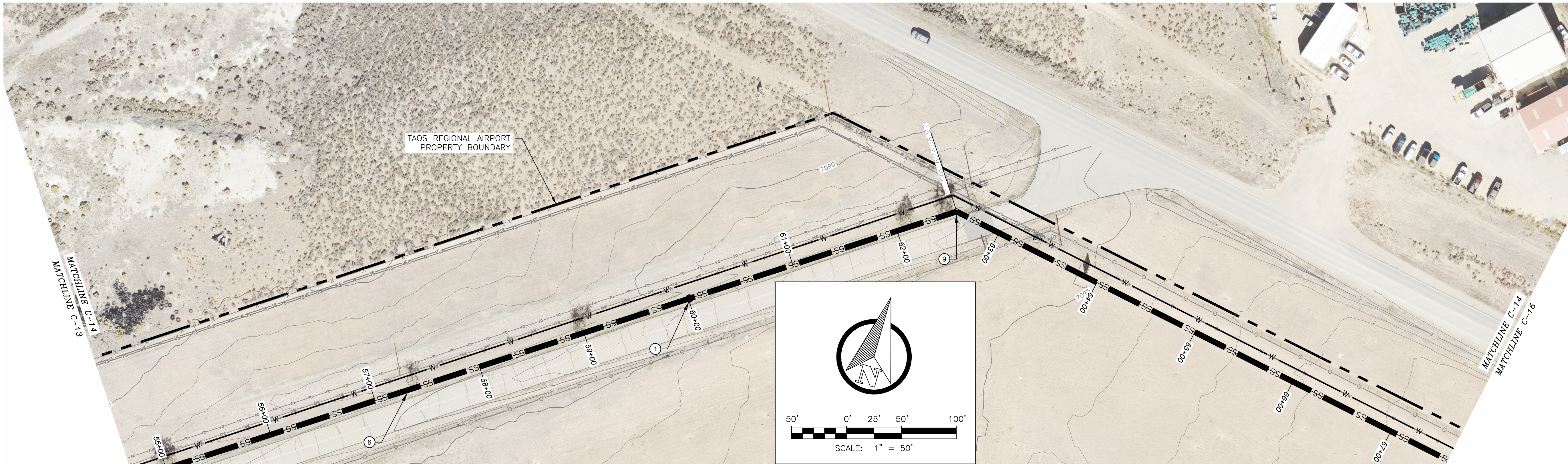
TAOS REGIONAL AIRPORT WATER
AND WASTEWATER UTILITIES
TAOS COUNTY, NM

PLAN AND PROFILE 11 - SEWER

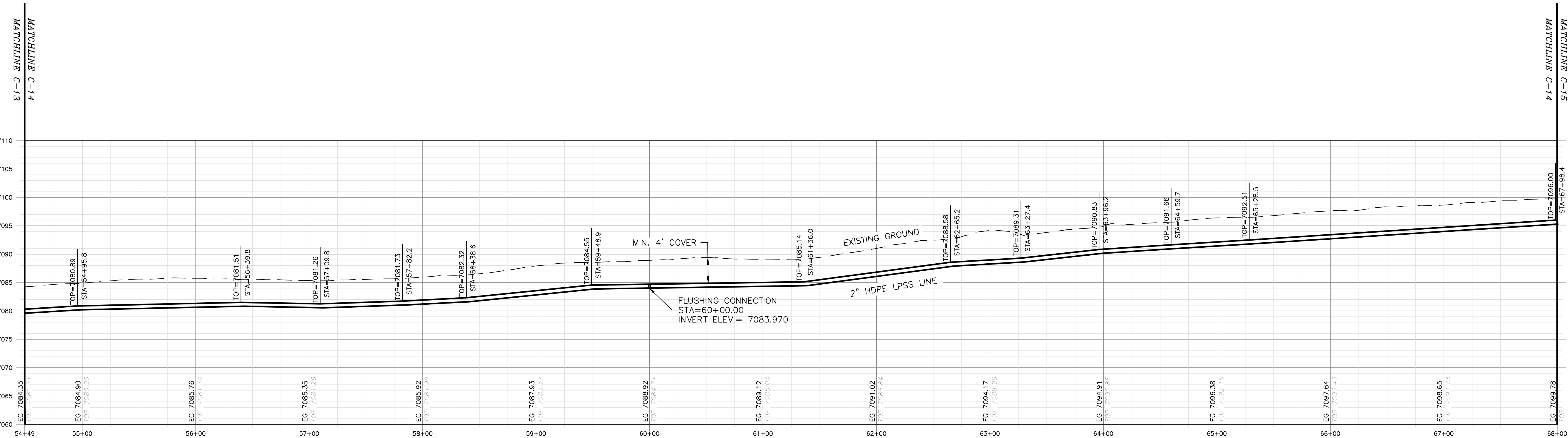
SHEET 17 OF 33
DWG NO. C-13

JOB NO.
DB21.1270

\\DATA\ASB\DATA\PROJECTS\DB21.1270_Taos_Airport-ABETA.CONSTRUCTION\CAD\PRODUCTION\ONSITE UTILITIES\C-14 - SEWER P AND P 12.DWG May 8, 2025 - 2:14 PM BY: ALEX NUNEZ-THOMPSON



PLAN



PROFILE

HORIZONTAL SCALE: 1"=50'
VERTICAL SCALE: 1"=10'

GENERAL NOTES:

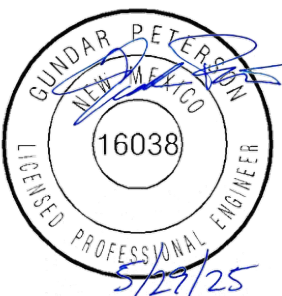
1. CLEAR AND GRUB PIPE CORRIDOR (MIN 10' WIDTH) AND GRADE SMOOTH AFTER CONSTRUCTION.
2. MINIMUM PIPE BURIAL SHALL BE 4' TO BOTTOM OF PIPE.
3. EXISTING UTILITIES SHOWN ARE APPROXIMATE. CONTRACTOR TO CONTACT APPROPRIATE UTILITY JURISDICTION AND POTHOLE EXISTING UTILITIES AS REQUIRED TO AVOID CONFLICTS.
4. MAINTAIN 6 FOOT CLEARANCE BETWEEN EXISTING ROAD EDGE OF PAVEMENT AND PIPELINE TRENCH EXCAVATION UNLESS OTHERWISE NOTED.
5. PIPELINE CROSSINGS OF ROADWAYS AND DRIVEWAYS SHALL BE IN ACCORDANCE WITH NM PUBLIC WORKS STANDARDS.

KEY NOTES:

- ① FLUSHING CONNECTIONS TO BE INSTALLED EVERY 1000' PER DETAIL 2, DWG C-24
- ② STAINLESS STEEL LATERAL KIT INSTALLED AT LATERAL JUNCTIONS BETWEEN GRINDER PUMP AND MAIN LINE PER DETAIL 1, DWG C-21
- ③ AIR/VACUUM RELIEF VALVES PER SPECIFICATIONS PLACED AT INTERVALS OF 2000 FEET PER DETAIL 2, DWG C-20
- ④ LATERAL KIT INSTALLED BETWEEN GRINDER PUMP AND MAIN LINE PER DETAIL 1, DWG C-21
- ⑤ 1 1/4" HDPE LPSS LATERAL
- ⑥ 2" HDPE LPSS LINE
- ⑦ 3" HDPE LPSS LINE
- ⑧ 90-DEGREE BEND
- ⑨ 45-DEGREE BEND
- ⑩ 22.5-DEGREE BEND
- ⑪ 11.25-DEGREE BEND
- ⑫ 3" SDR 11 HDPE TEE
- ⑬ BLIND FLANGE
- ⑭ 3" X 2" SDR 11 HDPE REDUCER
- ⑮ 2" SDR 11 HDPE TEE
- ⑯ ISOLATION VALVE
- ⑰ POTENTIAL UTILITY CROSSING
- ⑱ 2" X 1-1/4" SDR 11 HDPE REDUCER
- ⑲ NEW SEWAGE LIFT STATION PER SPECIFICATIONS. COORDINATE LOCATION WITH OTHERS.

REV. NO.	DATE	DESCRIPTION	APPROVED BY
0	05/03/25	ISSUED FOR BID	GP

DATE OF ISSUE: 05/03/25
DESIGNED BY: ANT
DRAWN BY: RT, ANT
CHECKED BY: GP
APPROVED BY: GP



TOWN OF TAOS
TAOS COUNTY, NEW MEXICO
EDA 08-79-05544

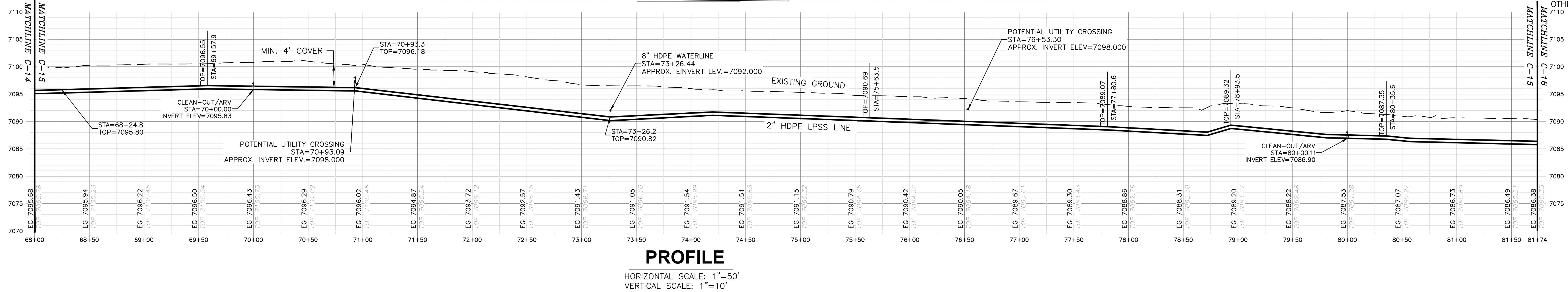
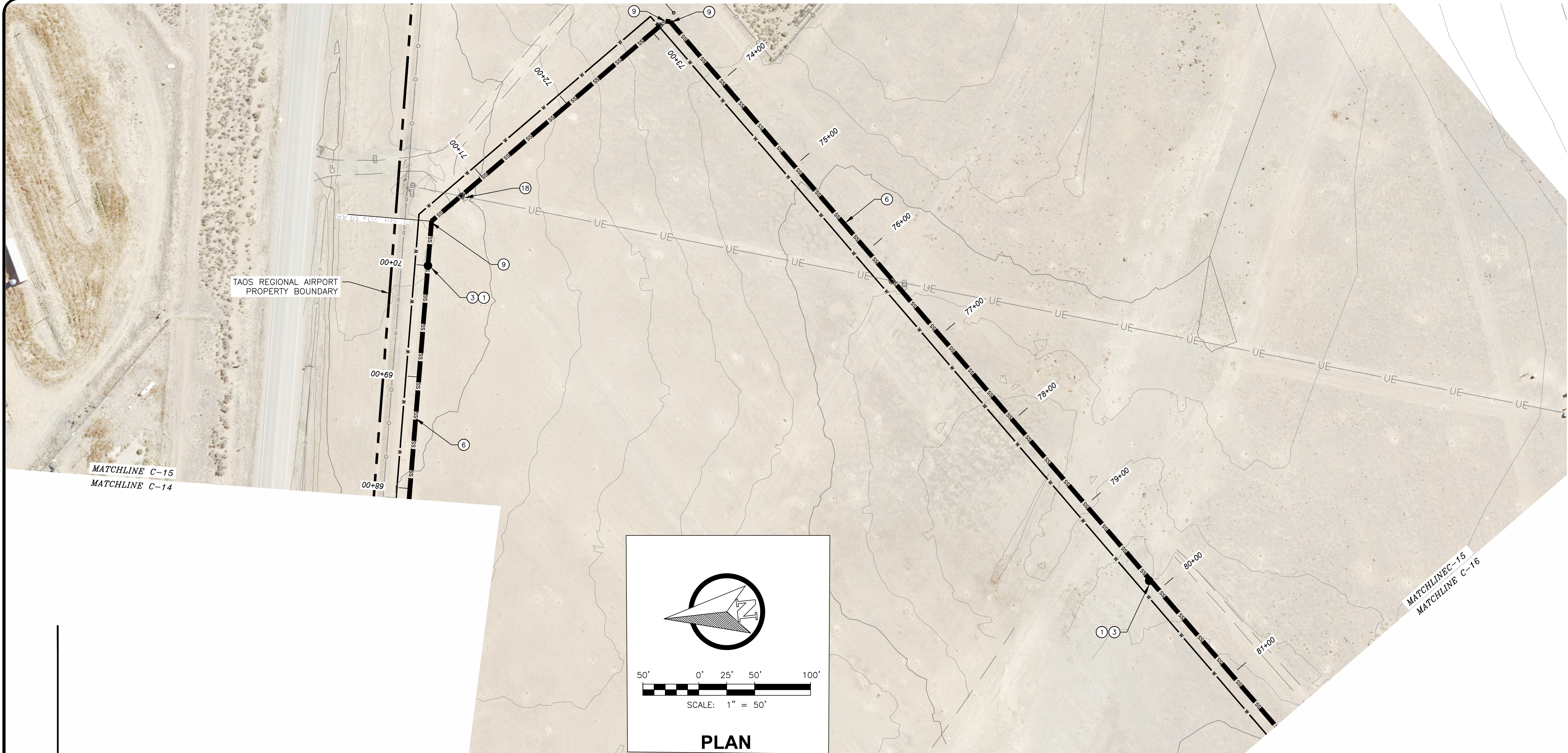
TAOS REGIONAL AIRPORT WATER
AND WASTEWATER UTILITIES
TAOS COUNTY, NM

PLAN AND PROFILE 12 - SEWER

SHEET 18 OF 33
DWG NO. C-14

JOB NO.
DB21.1270

\\DATA\ASB\DATA\PROJECTS\DB21.1270_TAO Regional Airport\CONSTRUCTION\CD\PRODUCTION\ON SITE UTILITIES\C-15 - SEWER P AND P 13.DWG May 8, 2025 - 2:14 PM BY: ALEX NUNEZ-THOMPSON



GENERAL NOTES:

1. CLEAR AND GRUB PIPE CORRIDOR (MIN 10' WIDTH) AND GRADE SMOOTH AFTER CONSTRUCTION.
2. MINIMUM PIPE BURIAL SHALL BE 4' TO BOTTOM OF PIPE.
3. EXISTING UTILITIES SHOWN ARE APPROXIMATE. CONTRACTOR TO CONTACT APPROPRIATE UTILITY JURISDICTION AND POTHOLE EXISTING UTILITIES AS REQUIRED TO AVOID CONFLICTS.
4. MAINTAIN 6 FOOT CLEARANCE BETWEEN EXISTING ROAD EDGE OF PAVEMENT AND PIPELINE TRENCH EXCAVATION UNLESS OTHERWISE NOTED.
5. PIPELINE CROSSINGS OF ROADWAYS AND DRIVEWAYS SHALL BE IN ACCORDANCE WITH NM PUBLIC WORKS STANDARDS.

KEY NOTES:

- ① FLUSHING CONNECTIONS TO BE INSTALLED EVERY 1000' PER DETAIL 2, DWG C-24
- ② STAINLESS STEEL LATERAL KIT INSTALLED AT LATERAL JUNCTIONS BETWEEN GRINDER PUMP AND MAIN LINE PER DETAIL 1, DWG C-21
- ③ AIR/VACUUM RELIEF VALVES PER SPECIFICATIONS PLACED AT INTERVALS OF 2000 FEET PER DETAIL 2, DWG C-20
- ④ LATERAL KIT INSTALLED BETWEEN GRINDER PUMP AND MAIN LINE PER DETAIL 1, DWG C-21
- ⑤ 1 1/4" HDPE LPSS LATERAL
- ⑥ 2" HDPE LPSS LINE
- ⑦ 3" HDPE LPSS LINE
- ⑧ 90-DEGREE BEND
- ⑨ 45-DEGREE BEND
- ⑩ 22.5-DEGREE BEND
- ⑪ 11.25-DEGREE BEND
- ⑫ 3" SDR 11 HDPE TEE
- ⑬ BLIND FLANGE
- ⑭ 3" X 2" SDR 11 HDPE REDUCER
- ⑮ 2" SDR 11 HDPE TEE
- ⑯ ISOLATION VALVE
- ⑰ POTENTIAL UTILITY CROSSING
- ⑱ 2" X 1-1/4" SDR 11 HDPE REDUCER
- ⑲ NEW SEWAGE LIFT STATION PER SPECIFICATIONS. COORDINATE LOCATION WITH OTHERS.

REV. NO.	DATE	DESCRIPTION	APPROVED BY
0	05/03/25	ISSUED FOR BID	GP

DATE OF ISSUE: 05/03/25

DESIGNED BY: ANT

DRAWN BY: RT, ANT

CHECKED BY: GP

APPROVED BY: GP

 **DBS&A**
a Geo-Logic Company
6501 Americas Parkway NE Suite 200
Albuquerque, NM 87110



TOWN OF TAO
TAOS COUNTY, NEW MEXICO
EDA 08-79-05544

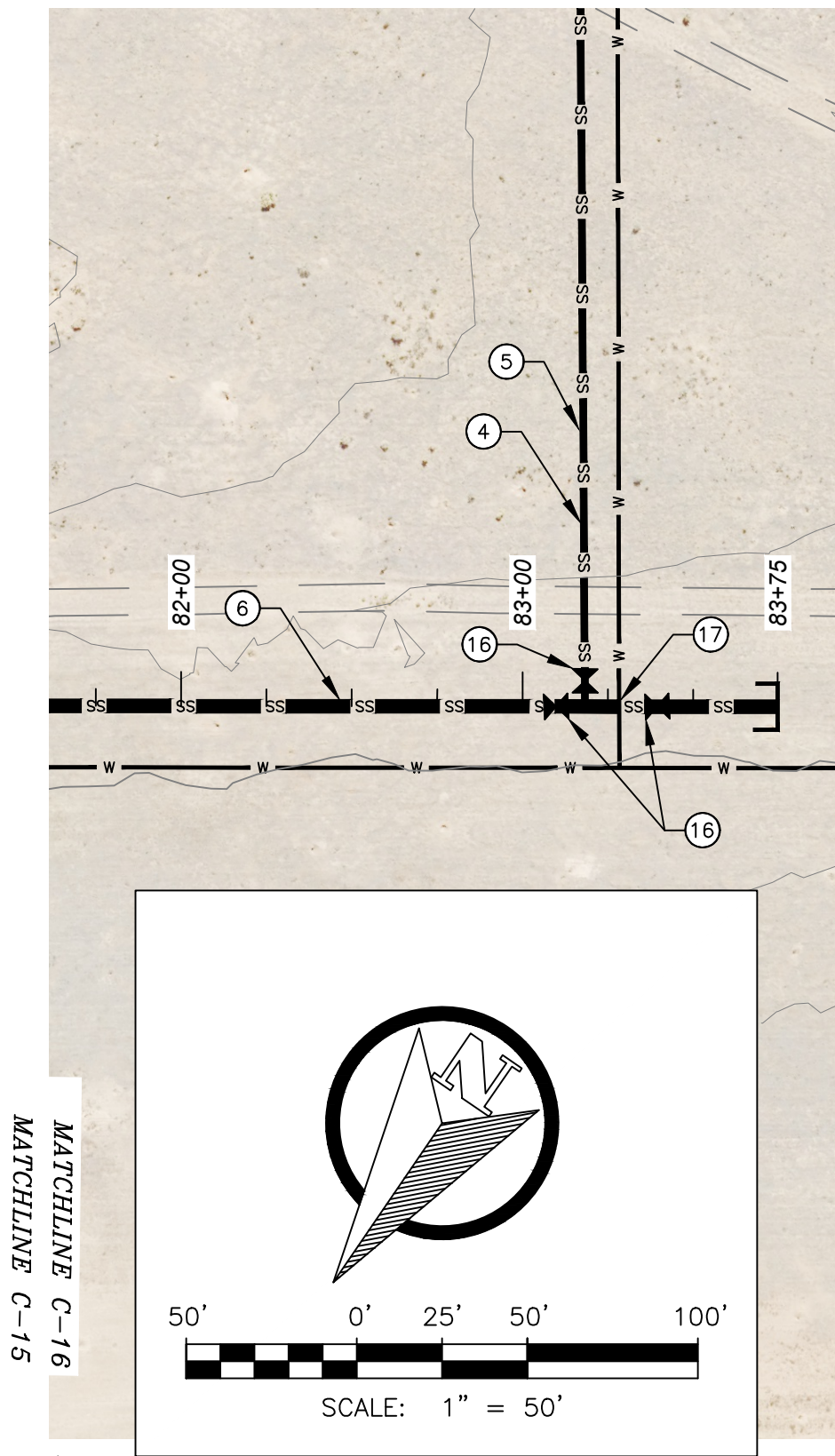
TAOS REGIONAL AIRPORT WATER
AND WASTEWATER UTILITIES
TAOS COUNTY, NM

PLAN AND PROFILE 13 - SEWER

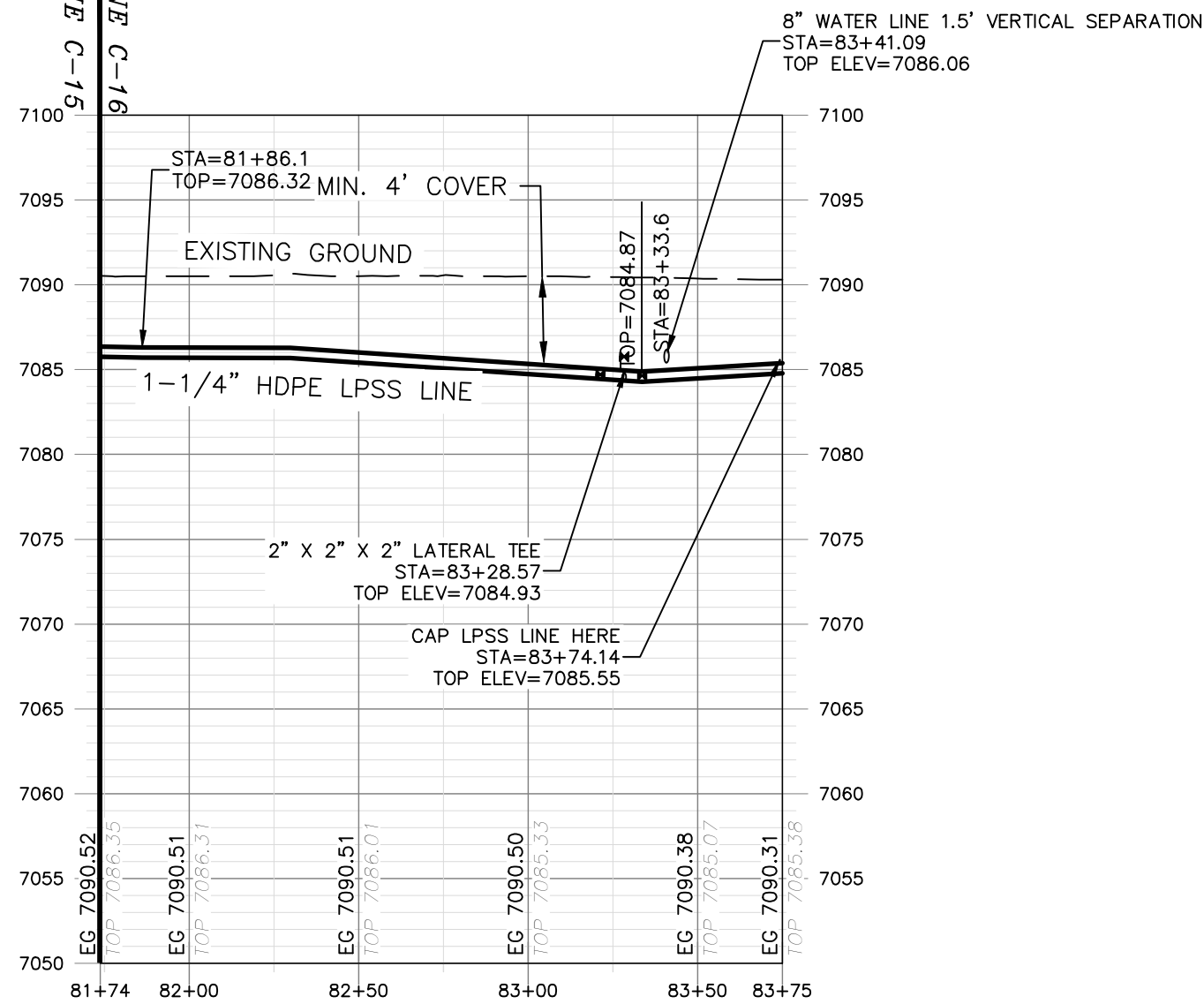
SHEET 19 OF 33
DWG NO. C-15

JOB NO.
DB21.1270

\\DATA\ASB\DATA\PROJECTS\DB21.1270_Taos_Airport-ABETA_CONSTRUCTION\CAD\PRODUCTION\ON SITE UTILITIES\C-16 - SEWER P AND P 14.DWG May 8, 2025 - 2:14 PM BY: ALEX NUNEZ-THOMPSON



PLAN



PROFILE

HORIZONTAL SCALE: 1"=50'
VERTICAL SCALE: 1"=10'

GENERAL NOTES:

1. CLEAR AND GRUB PIPE CORRIDOR (MIN 10' WIDTH) AND GRADE SMOOTH AFTER CONSTRUCTION.
2. MINIMUM PIPE BURIAL SHALL BE 4' TO BOTTOM OF PIPE.
3. EXISTING UTILITIES SHOWN ARE APPROXIMATE. CONTRACTOR TO CONTACT APPROPRIATE UTILITY JURISDICTION AND POTHOLE EXISTING UTILITIES AS REQUIRED TO AVOID CONFLICTS.
4. MAINTAIN 6 FOOT CLEARANCE BETWEEN EXISTING ROAD EDGE OF PAVEMENT AND PIPELINE TRENCH EXCAVATION UNLESS OTHERWISE NOTED.
5. PIPELINE CROSSINGS OF ROADWAYS AND DRIVEWAYS SHALL BE IN ACCORDANCE WITH NM PUBLIC WORKS STANDARDS.

KEY NOTES:

- ① FLUSHING CONNECTIONS TO BE INSTALLED EVERY 1000' PER DETAIL 2, DWG C-24
- ② STAINLESS STEEL LATERAL KIT INSTALLED AT LATERAL JUNCTIONS BETWEEN GRINDER PUMP AND MAIN LINE PER DETAIL 1, DWG C-21
- ③ AIR/VACUUM RELIEF VALVES PER SPECIFICATIONS PLACED AT INTERVALS OF 2000 FEET PER DETAIL 2, DWG C-20
- ④ LATERAL KIT INSTALLED BETWEEN GRINDER PUMP AND MAIN LINE PER DETAIL 1, DWG C-21
- ⑤ 1 1/4" HDPE LPSS LATERAL
- ⑥ 2" HDPE LPSS LINE
- ⑦ 3" HDPE LPSS LINE
- ⑧ 90-DEGREE BEND
- ⑨ 45-DEGREE BEND
- ⑩ 22.5-DEGREE BEND
- ⑪ 11.25-DEGREE BEND
- ⑫ 3" SDR 11 HDPE TEE
- ⑬ BLIND FLANGE
- ⑭ 3" X 2" SDR 11 HDPE REDUCER
- ⑮ 2" SDR 11 HDPE TEE
- ⑯ ISOLATION VALVE
- ⑰ POTENTIAL UTILITY CROSSING
- ⑱ 2" X 1-1/4" SDR 11 HDPE REDUCER
- ⑲ NEW SEWAGE LIFT STATION PER SPECIFICATIONS. COORDINATE LOCATION WITH OTHERS.

REV. NO.	DATE	DESCRIPTION	APPROVED BY
0	05/03/25	ISSUED FOR BID	GP

DATE OF ISSUE: 05/03/25
DESIGNED BY: ANT
DRAWN BY: RT, ANT
CHECKED BY: GP
APPROVED BY: GP



TOWN OF TAOS
TAOS COUNTY, NEW MEXICO
EDA 08-79-05544

TAOS REGIONAL AIRPORT WATER
AND WASTEWATER UTILITIES
TAOS COUNTY, NM

PLAN AND PROFILE 14 - SEWER

SHEET 20 OF 33
DWG NO. C-16

JOB NO.
DB21.1270