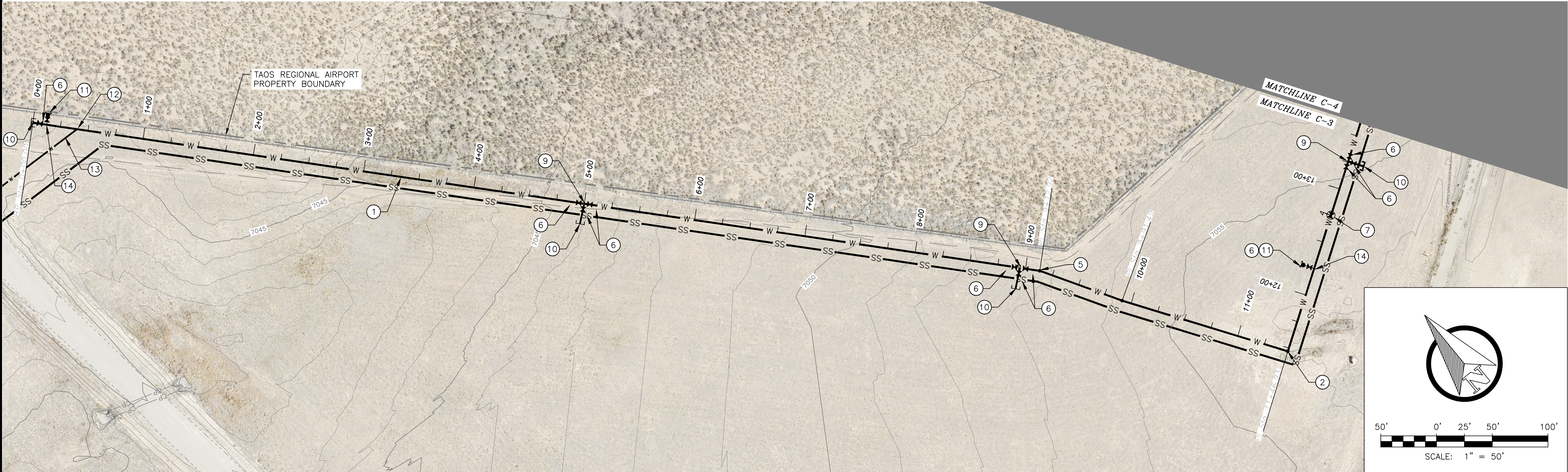
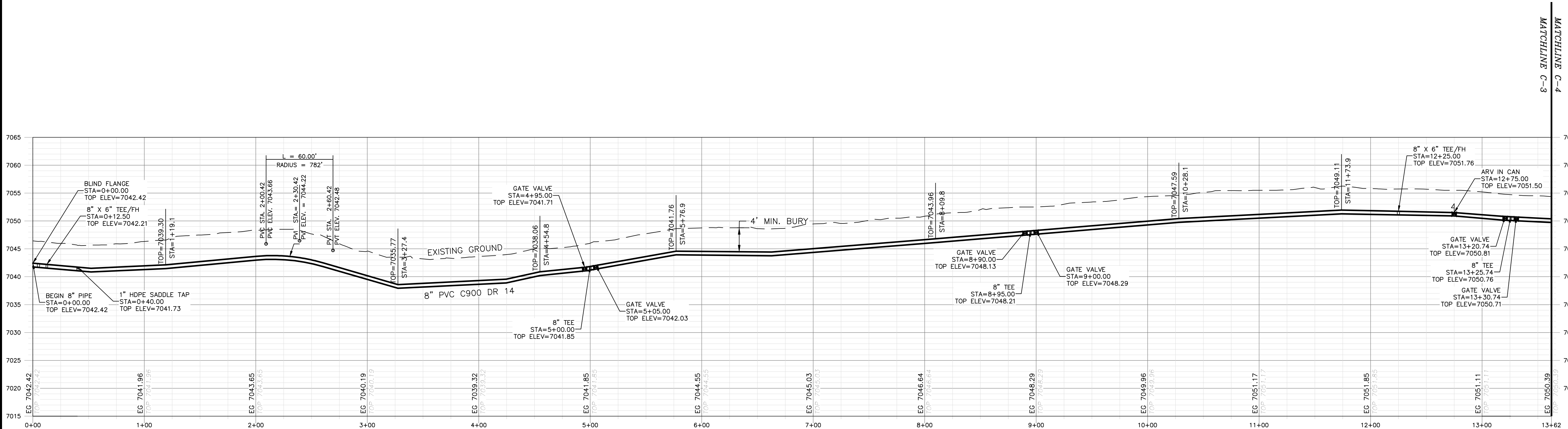


\\DATA\ASB\DATA\PROJECTS\DB21.1270_TAOs_AIRPORT-ABEYTA_CONSTRUCTION\CAD\PRODUCTION\ONSITE UTILITIES\C-3 - WATER P AND P 1.DWG May 8, 2025 - 2:14 PM BY: ALEX NUNEZ-THOMPSON



PLAN



PROFILE

HORIZONTAL SCALE: 1"=50'
VERTICAL SCALE: 1"=10'

GENERAL NOTES:

1. CLEAR AND GRUB PIPE CORRIDOR (MIN 10' WIDTH) AND GRADE SMOOTH AFTER ALL CONSTRUCTION.
2. MINIMUM PIPE BURIAL SHALL BE 4' TO TOP OF PIPE.
3. EXISTING UTILITIES SHOWN ARE APPROXIMATE. CONTRACTOR TO CONTACT APPROPRIATE UTILITY JURISDICTION AND POTHOLE EXISTING UTILITIES AS REQUIRED TO AVOID CONFLICTS.
4. MAINTAIN 6' CLEARANCE BETWEEN EXISTING ROAD EDGE OF PAVEMENT AND WATERLINE TRENCH EXCAVATION UNLESS OTHERWISE NOTED.
5. PIPELINE CROSSINGS OF ROADWAYS AND DRIVEWAYS SHALL BE IN ACCORDANCE WITH NM PUBLIC WORKS STANDARDS.
6. MAINTAIN 10' HORIZONTAL AND 1.5' VERTICAL CLEARANCE BETWEEN WATERLINES AND SEWER FORCE MAIN.
7. PIPE RESTRAINT PER DETAIL 3, DWG C-21

KEY NOTES:

- ① 8" SDR 14 C900 PVC LINE PER DETAIL 1, DWG C-18
- ② 90-DEGREE BEND
- ③ 45-DEGREE BEND
- ④ 22.5-DEGREE BEND
- ⑤ 11.25-DEGREE BEND
- ⑥ GATE VALVE IN CAN PER DETAIL 3, DWG C-18
- ⑦ AIR RELEASE VALVE IN VAULT PER DETAIL 2, DWG C-20
- ⑧ UTILITY CROSSING
- ⑨ 8" TEE
- ⑩ BLIND FLANGE
- ⑪ FIRE HYDRANT PER DETAIL 1, DWG C-20
- ⑫ 1" SADDLE TAP
- ⑬ 1" HDPE WATER SERVICE LINE
- ⑭ 8" X 6" TEE

REV. NO.	DATE	DESCRIPTION	APPROVED BY
0	05/03/25	ISSUED FOR BID	GP

DATE OF ISSUE: 05/03/25
DESIGNED BY: ANT
DRAWN BY: RT, ANT
CHECKED BY: GP
APPROVED BY: GP

**DBS&A**
a Geo-Logic Company
6501 Americas Parkway NE Suite 200
Albuquerque, NM 87110



TOWN OF TAOs
TAOS COUNTY, NEW MEXICO
EDA 08-79-05544

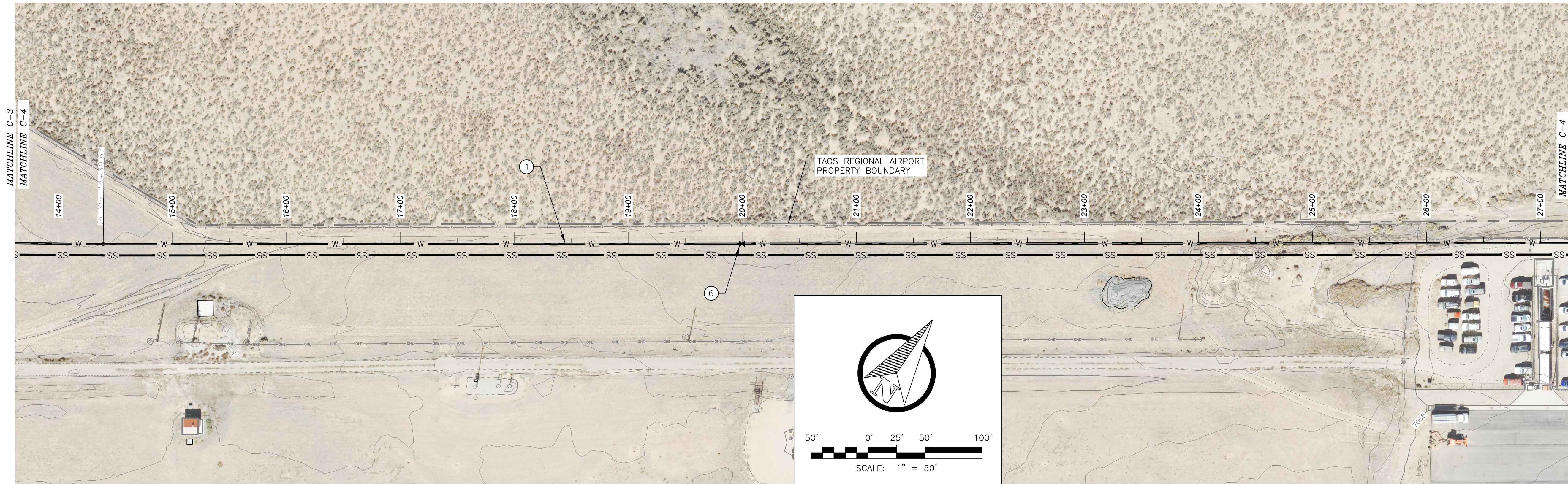
TAOS REGIONAL AIRPORT WATER
AND WASTEWATER UTILITIES
TAOS COUNTY, NM

PLAN AND PROFILE 1 - WATER

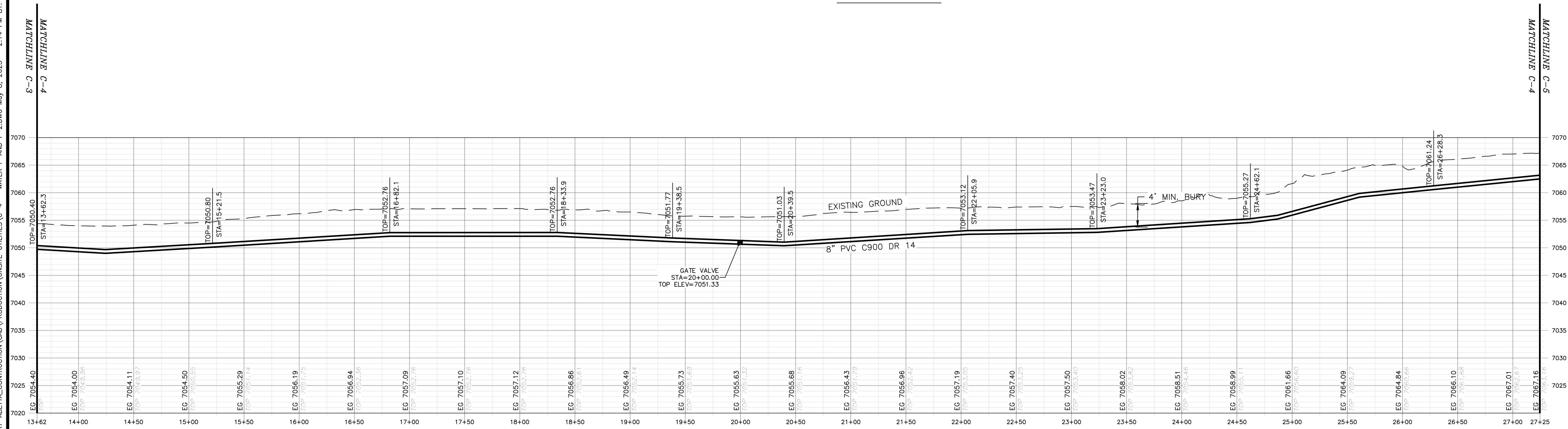
SHEET 7 OF 33
DWG NO. C-3

JOB NO.
DB21.1270

\\DATA\ASB\DATA\PROJECTS\DB21.1270_Taos_Airport\ABETA_CONSTRUCTION\CD\PRODUCTION\ONSITE UTILITIES\C-4 - WATER P AND P 2.DWG May 8, 2025 - 2:14 PM BY: ALEX NUREZ-THOMPSON



PLAN



PROFILE

HORIZONTAL SCALE: 1"=50'
VERTICAL SCALE: 1"=10'

GENERAL NOTES:

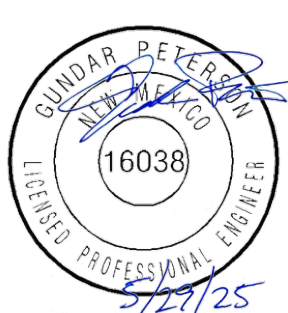
1. CLEAR AND GRUB PIPE CORRIDOR (MIN 10' WIDTH) AND GRADE SMOOTH AFTER ALL CONSTRUCTION.
2. MINIMUM PIPE BURIAL SHALL BE 4' TO TOP OF PIPE.
3. EXISTING UTILITIES SHOWN ARE APPROXIMATE. CONTRACTOR TO CONTACT APPROPRIATE UTILITY JURISDICTION AND POTHOLE EXISTING UTILITIES AS REQUIRED TO AVOID CONFLICTS.
4. MAINTAIN 6' CLEARANCE BETWEEN EXISTING ROAD EDGE OF PAVEMENT AND WATERLINE TRENCH EXCAVATION UNLESS OTHERWISE NOTED.
5. PIPELINE CROSSINGS OF ROADWAYS AND DRIVEWAYS SHALL BE IN ACCORDANCE WITH NM PUBLIC WORKS STANDARDS.
6. MAINTAIN 10' HORIZONTAL AND 1.5' VERTICAL CLEARANCE BETWEEN WATERLINES AND SEWER FORCE MAIN.
7. PIPE RESTRAINT PER DETAIL 3, DWG C-21

KEY NOTES:

- ① 8" SDR 14 C900 PVC LINE PER DETAIL 1, DWG C-18
- ② 90-DEGREE BEND
- ③ 45-DEGREE BEND
- ④ 22.5-DEGREE BEND
- ⑤ 11.25-DEGREE BEND
- ⑥ GATE VALVE IN CAN PER DETAIL 3, DWG C-18
- ⑦ AIR RELEASE VALVE IN VAULT PER DETAIL 2, DWG C-20
- ⑧ UTILITY CROSSING
- ⑨ 8" TEE
- ⑩ BLIND FLANGE
- ⑪ FIRE HYDRANT PER DETAIL 1, DWG C-20
- ⑫ 1" SADDLE TAP
- ⑬ 1" HDPE WATER SERVICE LINE
- ⑭ 8" X 6" TEE

REV. NO.	DATE	DESCRIPTION	APPROVED BY
0	05/03/25	ISSUED FOR BID	GP

DATE OF ISSUE: 05/03/25
DESIGNED BY: ANT
DRAWN BY: RT, ANT
CHECKED BY: GP
APPROVED BY: GP



TOWN OF TAOS
TAOS COUNTY, NEW MEXICO
EDA 08-79-05544

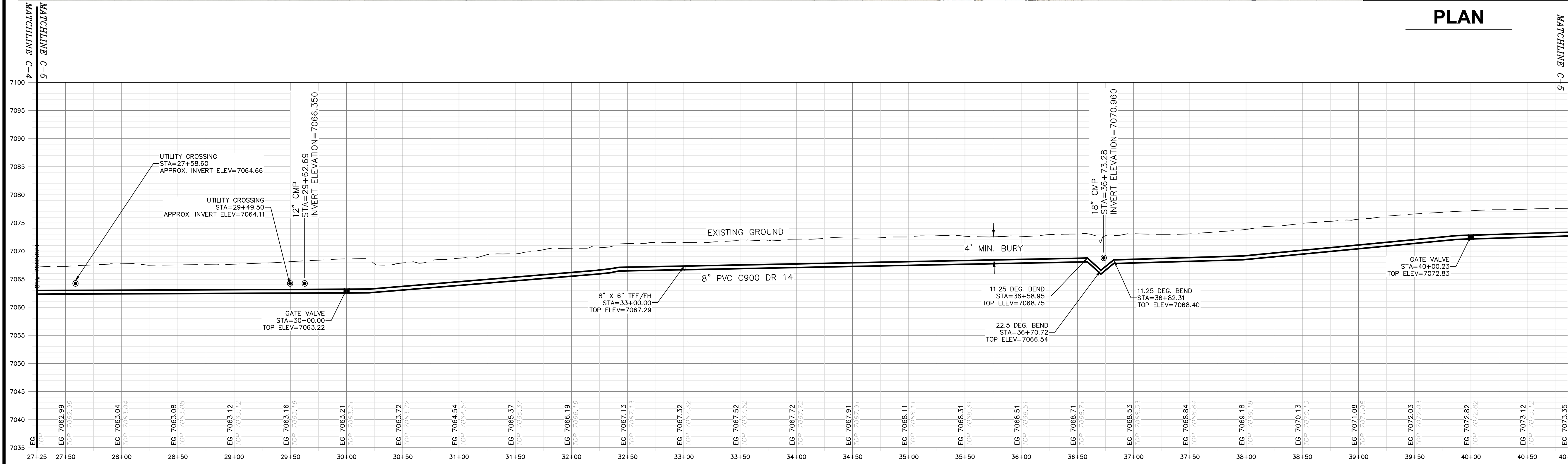
TAOS REGIONAL AIRPORT WATER
AND WASTEWATER UTILITIES
TAOS COUNTY, NM

PLAN AND PROFILE 2 - WATER

SHEET 8 OF 33
DWG NO. C-4

JOB NO.
DB21.1270

\\DATA\ASB\DATA\PROJECTS\DB21.1270_TAOs_AIRPORT-ABETA_CONSTRUCTION\CD\PRODUCTION\ONSITE UTILITIES\C-5 - WATER P AND P 3.DWG May 8, 2025 - 2:14 PM BY: ALEX NUREZ-THOMPSON



GENERAL NOTES:

1. CLEAR AND GRUB PIPE CORRIDOR (MIN 10' WIDTH) AND GRADE SMOOTH AFTER ALL CONSTRUCTION.
2. MINIMUM PIPE BURIAL SHALL BE 4' TO TOP OF PIPE.
3. EXISTING UTILITIES SHOWN ARE APPROXIMATE. CONTRACTOR TO CONTACT APPROPRIATE UTILITY JURISDICTION AND POTHOLE EXISTING UTILITIES AS REQUIRED TO AVOID CONFLICTS.
4. MAINTAIN 6' CLEARANCE BETWEEN EXISTING ROAD EDGE OF PAVEMENT AND WATERLINE TRENCH EXCAVATION UNLESS OTHERWISE NOTED.
5. PIPELINE CROSSINGS OF ROADWAYS AND DRIVEWAYS SHALL BE IN ACCORDANCE WITH NM PUBLIC WORKS STANDARDS.
6. MAINTAIN 10' HORIZONTAL AND 1.5' VERTICAL CLEARANCE BETWEEN WATERLINES AND SEWER FORCE MAIN.
7. PIPE RESTRAINT PER DETAIL 3, DWG C-21

KEY NOTES:

- ① 8" SDR 14 C900 PVC LINE PER DETAIL 1, DWG C-18
- ② 90-DEGREE BEND
- ③ 45-DEGREE BEND
- ④ 22.5-DEGREE BEND
- ⑤ 11.25-DEGREE BEND
- ⑥ GATE VALVE IN CAN PER DETAIL 3, DWG C-18
- ⑦ AIR RELEASE VALVE IN VAULT PER DETAIL 2, DWG C-20
- ⑧ UTILITY CROSSING
- ⑨ 8" TEE
- ⑩ BLIND FLANGE
- ⑪ FIRE HYDRANT PER DETAIL 1, DWG C-20
- ⑫ 1" SADDLE TAP
- ⑬ 1" HDPE WATER SERVICE LINE
- ⑭ 8" X 6" TEE

REV. NO.	DATE	DESCRIPTION	APPROVED BY
0	05/03/25	ISSUED FOR BID	GP

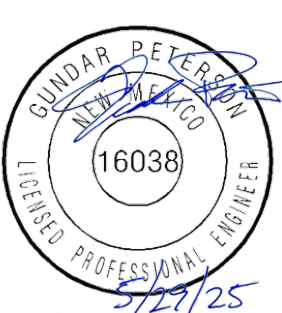
DATE OF ISSUE: 05/03/25

DESIGNED BY: ANT

DRAWN BY: RT, ANT

CHECKED BY: GP

APPROVED BY: GP



TOWN OF TAOs
TAOS COUNTY, NEW MEXICO
EDA 08-79-05544

TAOS REGIONAL AIRPORT WATER
AND WASTEWATER UTILITIES
TAOS COUNTY, NM

PLAN AND PROFILE 3 - WATER

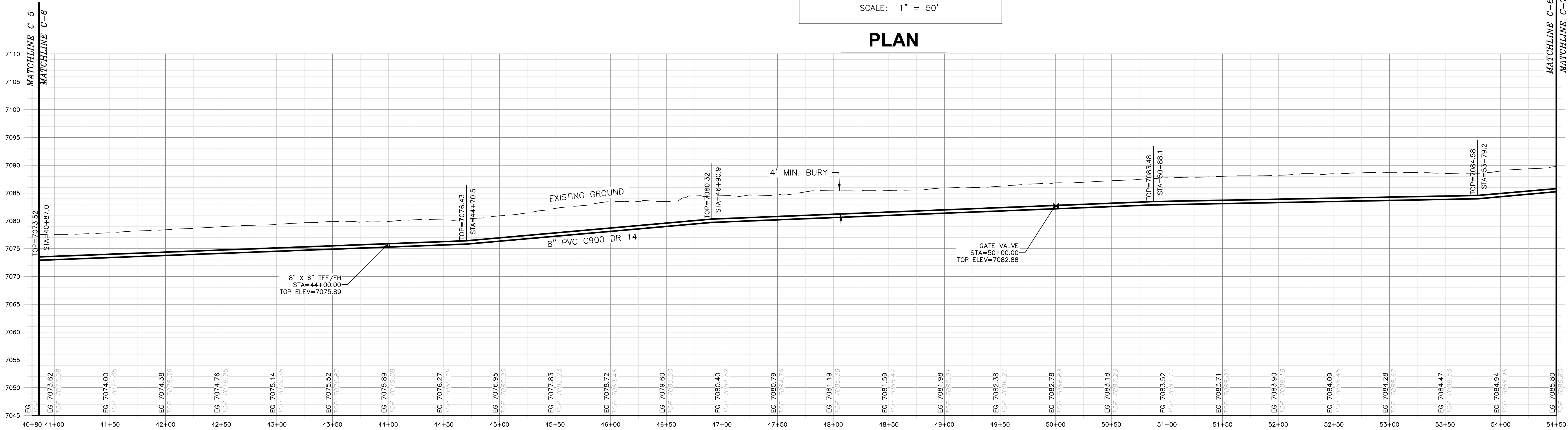
SHEET 9 OF 33
DWG NO. C-5

JOB NO.
DB21.1270

\\DATA\ASB\DATA\PROJECTS\DB21.1270_Taos_Airport-ABEYTA-CONTRUCTION\CAD\PRODUCTION\ON SITE UTILITIES\C-6 - WATER P AND P 4.DWG May 8, 2025 - 2:14 PM BY: ALEX NUREZ-THOMPSON



PLAN



PROFILE

HORIZONTAL SCALE: 1"=50'
VERTICAL SCALE: 1"=10'

GENERAL NOTES:

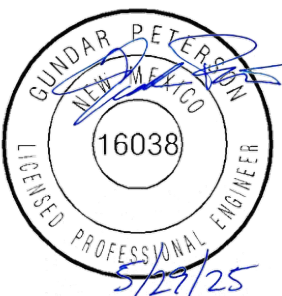
1. CLEAR AND GRUB PIPE CORRIDOR (MIN 10' WIDTH) AND GRADE SMOOTH AFTER ALL CONSTRUCTION.
2. MINIMUM PIPE BURIAL SHALL BE 4' TO TOP OF PIPE.
3. EXISTING UTILITIES SHOWN ARE APPROXIMATE. CONTRACTOR TO CONTACT APPROPRIATE UTILITY JURISDICTION AND POTHOLE EXISTING UTILITIES AS REQUIRED TO AVOID CONFLICTS.
4. MAINTAIN 6' CLEARANCE BETWEEN EXISTING ROAD EDGE OF PAVEMENT AND WATERLINE TRENCH EXCAVATION UNLESS OTHERWISE NOTED.
5. PIPELINE CROSSINGS OF ROADWAYS AND DRIVEWAYS SHALL BE IN ACCORDANCE WITH NM PUBLIC WORKS STANDARDS.
6. MAINTAIN 10' HORIZONTAL AND 1.5' VERTICAL CLEARANCE BETWEEN WATERLINES AND SEWER FORCE MAIN.
7. PIPE RESTRAINT PER DETAIL 3, DWG C-21

KEY NOTES:

- ① 8" SDR 14 C900 PVC LINE PER DETAIL 1, DWG C-18
- ② 90-DEGREE BEND
- ③ 45-DEGREE BEND
- ④ 22.5-DEGREE BEND
- ⑤ 11.25-DEGREE BEND
- ⑥ GATE VALVE IN CAN PER DETAIL 3, DWG C-18
- ⑦ AIR RELEASE VALVE IN VAULT PER DETAIL 2, DWG C-20
- ⑧ UTILITY CROSSING
- ⑨ 8" TEE
- ⑩ BLIND FLANGE
- ⑪ FIRE HYDRANT PER DETAIL 1, DWG C-20
- ⑫ 1" SADDLE TAP
- ⑬ 1" HDPE WATER SERVICE LINE
- ⑭ 8" X 6" TEE

REV. NO.	DATE	DESCRIPTION	APPROVED BY
0	05/03/25	ISSUED FOR BID	GP

DATE OF ISSUE: 05/03/25
DESIGNED BY: ANT
DRAWN BY: RT, ANT
CHECKED BY: GP
APPROVED BY: GP



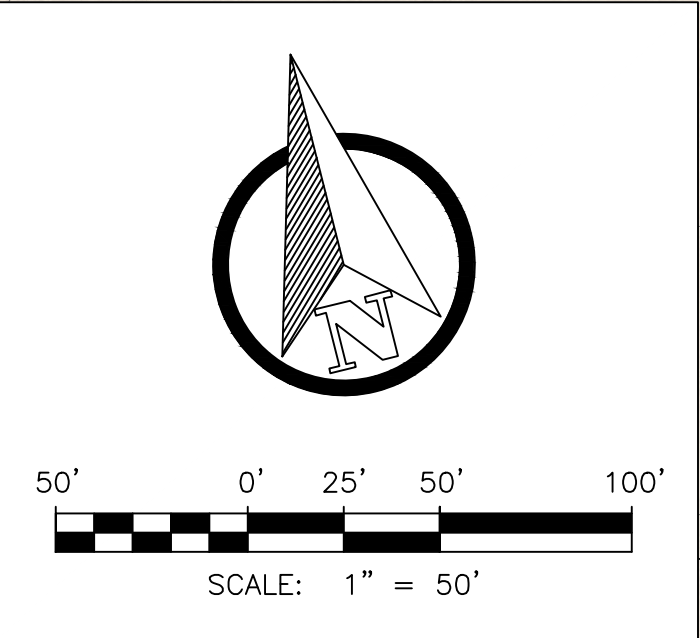
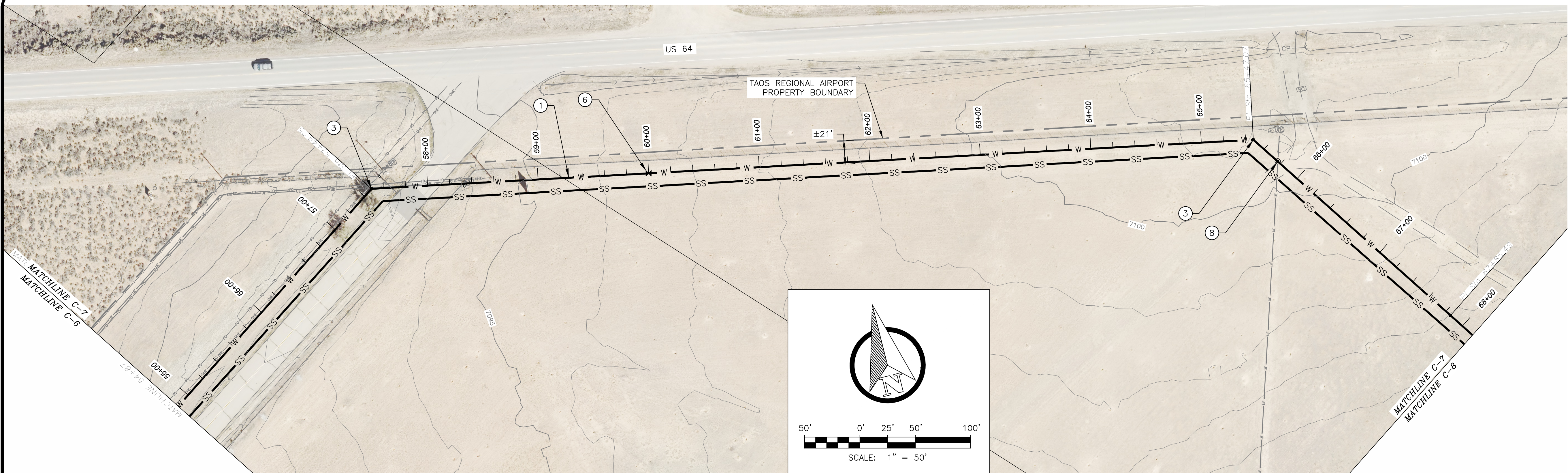
TOWN OF TAOS
TAOS COUNTY, NEW MEXICO
EDA 08-79-05544

TAOS REGIONAL AIRPORT WATER
AND WASTEWATER UTILITIES
TAOS COUNTY, NM

PLAN AND PROFILE 4 - WATER

SHEET 10 OF 33
DWG NO. C-6

JOB NO.
DB21.1270



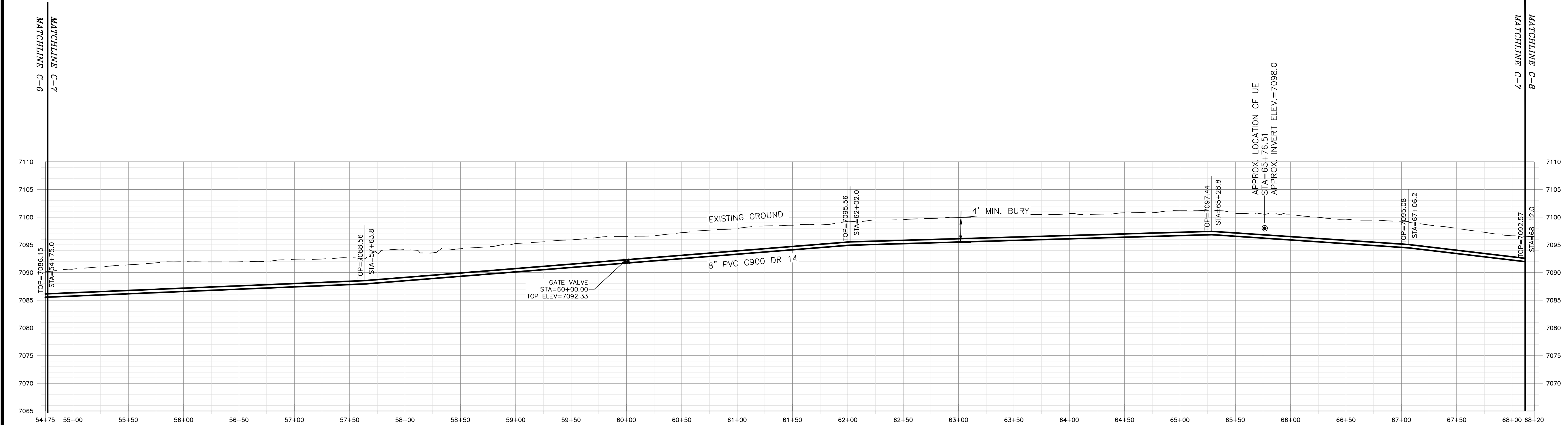
PLAN

GENERAL NOTES:

1. CLEAR AND GRUB PIPE CORRIDOR (MIN 10' WIDTH) AND GRADE SMOOTH AFTER ALL CONSTRUCTION.
2. MINIMUM PIPE BURIAL SHALL BE 4' TO TOP OF PIPE.
3. EXISTING UTILITIES SHOWN ARE APPROXIMATE. CONTRACTOR TO CONTACT APPROPRIATE UTILITY JURISDICTION AND POTHOLE EXISTING UTILITIES AS REQUIRED TO AVOID CONFLICTS.
4. MAINTAIN 6' CLEARANCE BETWEEN EXISTING ROAD EDGE OF PAVEMENT AND WATERLINE TRENCH EXCAVATION UNLESS OTHERWISE NOTED.
5. PIPELINE CROSSINGS OF ROADWAYS AND DRIVEWAYS SHALL BE IN ACCORDANCE WITH NM PUBLIC WORKS STANDARDS.
6. MAINTAIN 10' HORIZONTAL AND 1.5' VERTICAL CLEARANCE BETWEEN WATERLINES AND SEWER FORCE MAIN.
7. PIPE RESTRAINT PER DETAIL 3, DWG C-21

KEY NOTES:

- ① 8" SDR 14 C900 PVC LINE PER DETAIL 1, DWG C-18
- ② 90-DEGREE BEND
- ③ 45-DEGREE BEND
- ④ 22.5-DEGREE BEND
- ⑤ 11.25-DEGREE BEND
- ⑥ GATE VALVE IN CAN PER DETAIL 3, DWG C-18
- ⑦ AIR RELEASE VALVE IN VAULT PER DETAIL 2, DWG C-20
- ⑧ UTILITY CROSSING
- ⑨ 8" TEE
- ⑩ BLIND FLANGE
- ⑪ FIRE HYDRANT PER DETAIL 1, DWG C-20
- ⑫ 1" SADDLE TAP
- ⑬ 1" HDPE WATER SERVICE LINE
- ⑭ 8" X 6" TEE

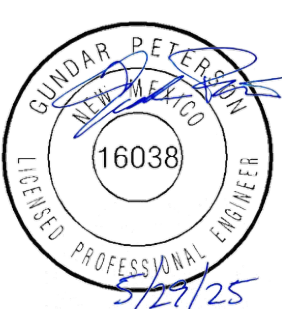


PROFILE

HORIZONTAL SCALE: 1"=50'
VERTICAL SCALE: 1"=10'

REV. NO.	DATE	DESCRIPTION	APPROVED BY
0	05/03/25	ISSUED FOR BID	GP

DATE OF ISSUE: 05/03/25
DESIGNED BY: ANT
DRAWN BY: RT, ANT
CHECKED BY: GP
APPROVED BY: GP



TOWN OF TAOS
TAOS COUNTY, NEW MEXICO
EDA 08-79-05544

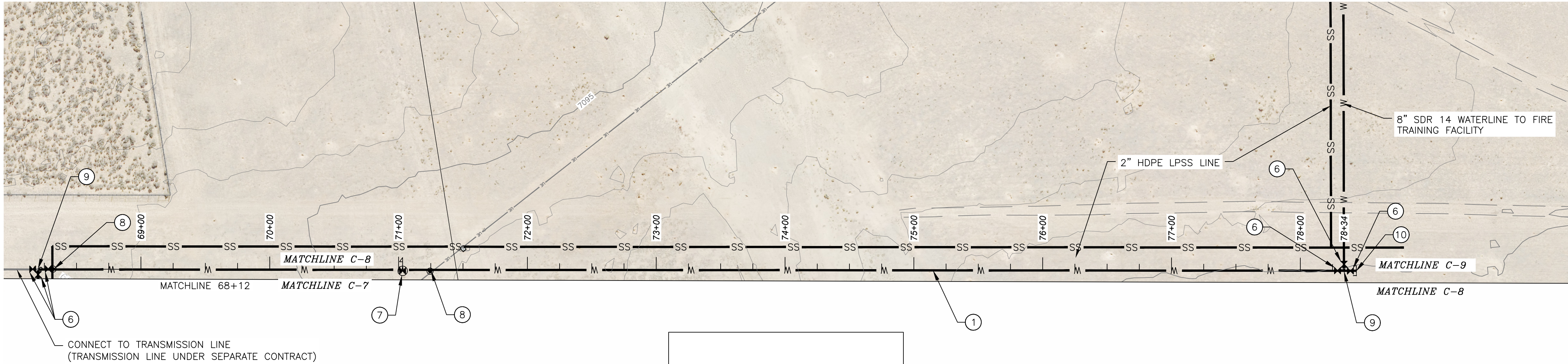
TAOS REGIONAL AIRPORT WATER
AND WASTEWATER UTILITIES
TAOS COUNTY, NM

PLAN AND PROFILE 5 - WATER

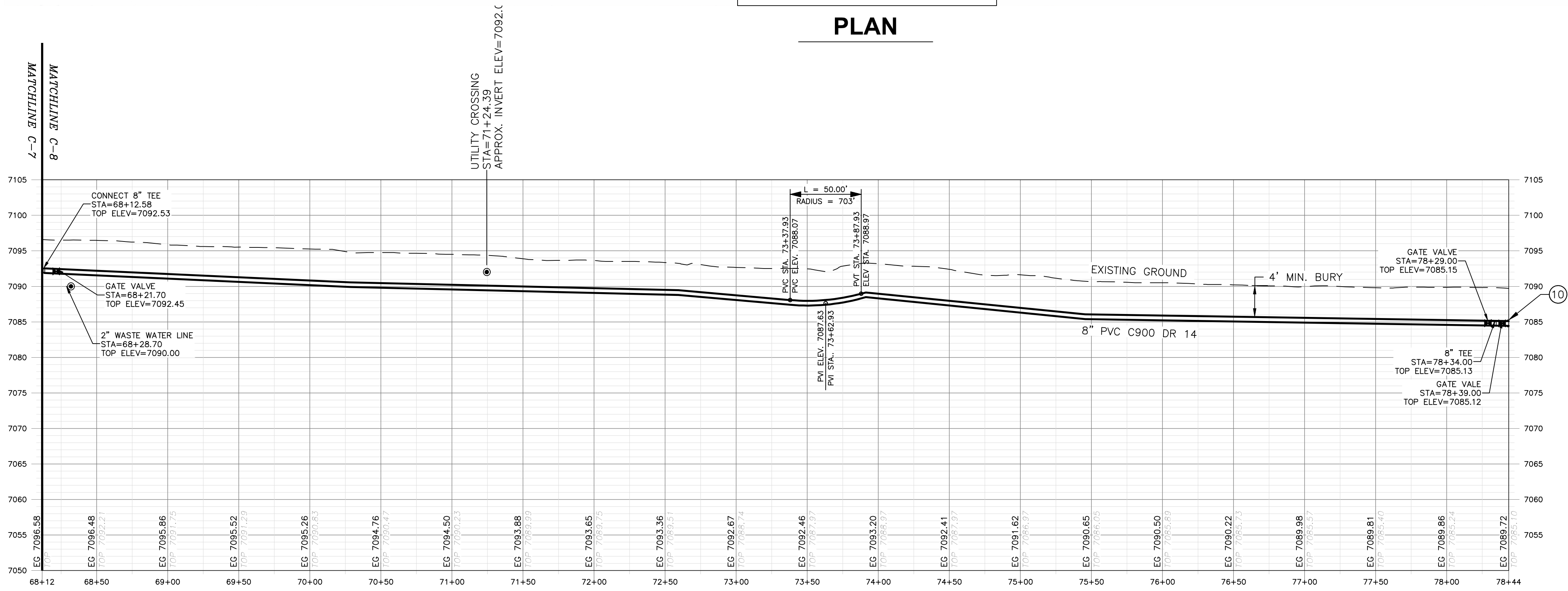
SHEET 11 OF 33
DWG NO. C-7

JOB NO.
DB21.1270

\\DATA\ASB\DATA\PROJECTS\DB21.1270_TAO\TAOS_AIRPORT-ABETTA-CONTRUCTION\CAD\PRODUCTION\ONSITE UTILITIES\C-8 - WATER P AND P 6.DWG May 8, 2025 - 2:14 PM BY: ALEX NUREZ-THOMPSON



PLAN



PROFILE

HORIZONTAL SCALE: 1"=50'
VERTICAL SCALE: 1"=10'

GENERAL NOTES:

1. CLEAR AND GRUB PIPE CORRIDOR (MIN 10' WIDTH) AND GRADE SMOOTH AFTER ALL CONSTRUCTION.
2. MINIMUM PIPE BURIAL SHALL BE 4' TO TOP OF PIPE.
3. EXISTING UTILITIES SHOWN ARE APPROXIMATE. CONTRACTOR TO CONTACT APPROPRIATE UTILITY JURISDICTION AND POTHOLE EXISTING UTILITIES AS REQUIRED TO AVOID CONFLICTS.
4. MAINTAIN 6' CLEARANCE BETWEEN EXISTING ROAD EDGE OF PAVEMENT AND WATERLINE TRENCH EXCAVATION UNLESS OTHERWISE NOTED.
5. PIPELINE CROSSINGS OF ROADWAYS AND DRIVEWAYS SHALL BE IN ACCORDANCE WITH NM PUBLIC WORKS STANDARDS.
6. MAINTAIN 10' HORIZONTAL AND 1.5' VERTICAL CLEARANCE BETWEEN WATERLINES AND SEWER FORCE MAIN.
7. PIPE RESTRAINT PER DETAIL 3, DWG C-21

KEY NOTES:

- ① 8" SDR 14 C900 PVC LINE PER DETAIL 1, DWG C-18
- ② 90-DEGREE BEND
- ③ 45-DEGREE BEND
- ④ 22.5-DEGREE BEND
- ⑤ 11.25-DEGREE BEND
- ⑥ GATE VALVE IN CAN PER DETAIL 3, DWG C-18
- ⑦ AIR RELEASE VALVE IN VAULT PER DETAIL 2, DWG C-20
- ⑧ UTILITY CROSSING
- ⑨ 8" TEE
- ⑩ BLIND FLANGE
- ⑪ FIRE HYDRANT PER DETAIL 1, DWG C-20
- ⑫ 1" SADDLE TAP
- ⑬ 1" HDPE WATER SERVICE LINE
- ⑭ 8" X 6" TEE

REV. NO.	DATE	DESCRIPTION	APPROVED BY
0	05/03/25	ISSUED FOR BID	GP

DATE OF ISSUE: 05/03/25
DESIGNED BY: ANT
DRAWN BY: RT, ANT
CHECKED BY: GP
APPROVED BY: GP



DBS&A
a Geo-Logic Company
6501 Americas Parkway NE Suite 200
Albuquerque, NM 87110



TOWN OF TAOS
TAOS COUNTY, NEW MEXICO
EDA 08-79-05544

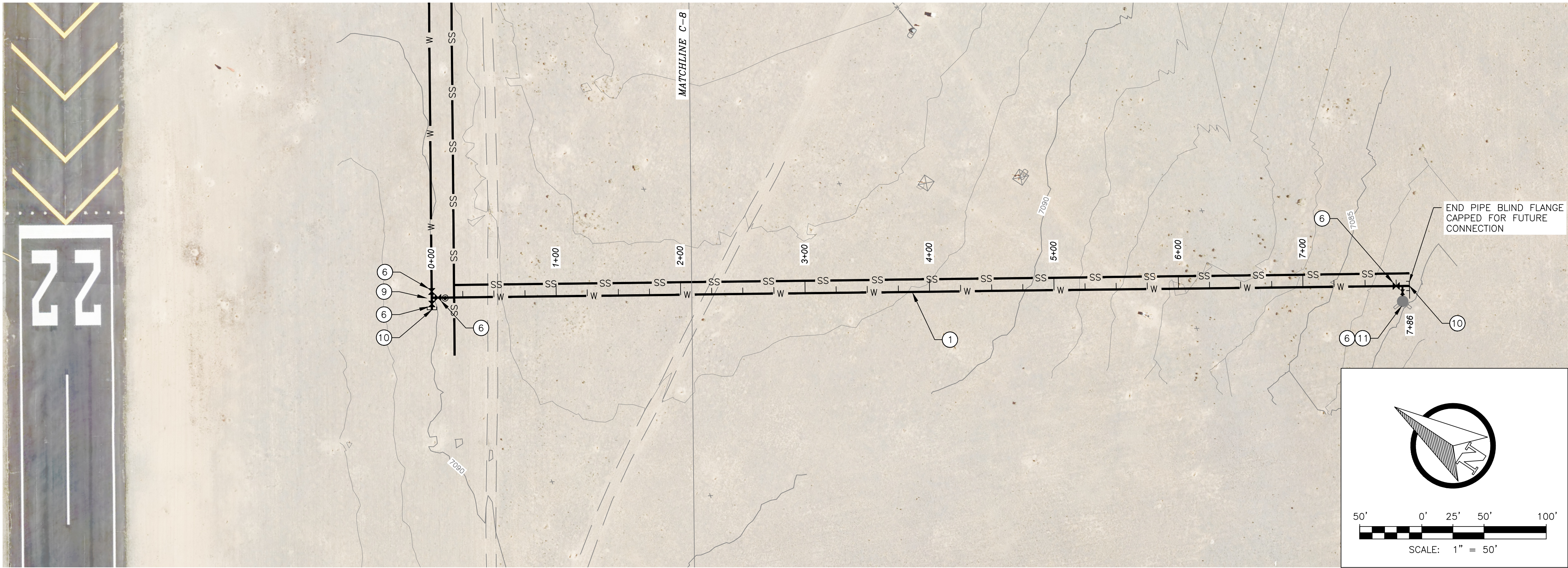
TAOS REGIONAL AIRPORT WATER
AND WASTEWATER UTILITIES
TAOS COUNTY, NM

PLAN AND PROFILE 6 - WATER

SHEET 12 OF 33
DWG NO. C-8

JOB NO.
DB21.1270

\\DATA\ASB\DATA\PROJECTS\DB21.1270_TAOs_AIRPORT-ABETTA_CONSTRUCTION\CAD\PRODUCTION\ON SITE UTILITIES\C-9 - WATER P AND P 7.DWG May 8, 2025 - 2:14 PM BY: ALEX NUNEZ-THOMPSON

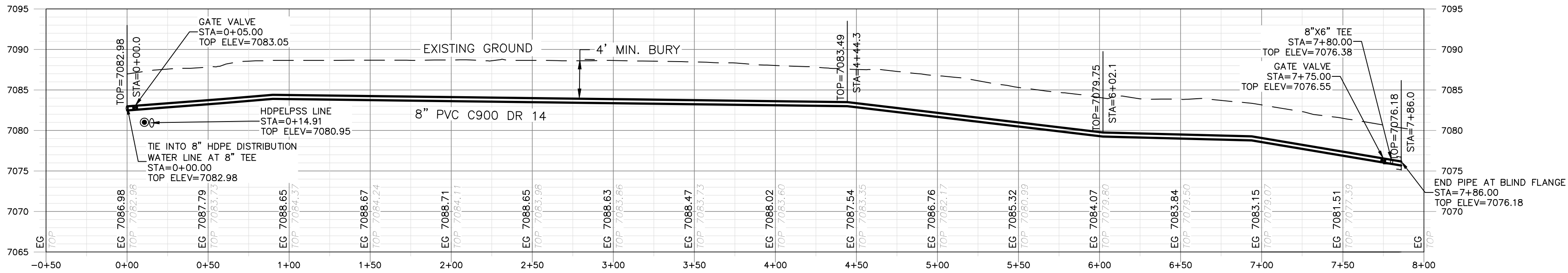


GENERAL NOTES:

1. CLEAR AND GRUB PIPE CORRIDOR (MIN 10' WIDTH) AND GRADE SMOOTH AFTER ALL CONSTRUCTION.
2. MINIMUM PIPE BURIAL SHALL BE 4' TO TOP OF PIPE.
3. EXISTING UTILITIES SHOWN ARE APPROXIMATE. CONTRACTOR TO CONTACT APPROPRIATE UTILITY JURISDICTION AND POTHOLE EXISTING UTILITIES AS REQUIRED TO AVOID CONFLICTS.
4. MAINTAIN 6' CLEARANCE BETWEEN EXISTING ROAD EDGE OF PAVEMENT AND WATERLINE TRENCH EXCAVATION UNLESS OTHERWISE NOTED.
5. PIPELINE CROSSINGS OF ROADWAYS AND DRIVEWAYS SHALL BE IN ACCORDANCE WITH NM PUBLIC WORKS STANDARDS.
6. MAINTAIN 10' HORIZONTAL AND 1.5' VERTICAL CLEARANCE BETWEEN WATERLINES AND SEWER FORCE MAIN.
7. PIPE RESTRAINT PER DETAIL 3, DWG C-21

KEY NOTES:

- ① 8" SDR 14 C900 PVC LINE PER DETAIL 1, DWG C-18
- ② 90-DEGREE BEND
- ③ 45-DEGREE BEND
- ④ 22.5-DEGREE BEND
- ⑤ 11.25-DEGREE BEND
- ⑥ GATE VALVE IN CAN PER DETAIL 3, DWG C-18
- ⑦ AIR RELEASE VALVE IN VAULT PER DETAIL 2, DWG C-20
- ⑧ UTILITY CROSSING
- ⑨ 8" TEE
- ⑩ BLIND FLANGE
- ⑪ FIRE HYDRANT PER DETAIL 1, DWG C-20
- ⑫ 1" SADDLE TAP
- ⑬ 1" HDPE WATER SERVICE LINE
- ⑭ 8" X 6" TEE



REV. NO.	DATE	DESCRIPTION	APPROVED BY
0	05/03/25	ISSUED FOR BID	GP

DATE OF ISSUE: 05/03/25
DESIGNED BY: ANT
DRAWN BY: RT, ANT
CHECKED BY: GP
APPROVED BY: GP



TOWN OF TAOs
TAOS COUNTY, NEW MEXICO
EDA 08-79-05544

TAOS REGIONAL AIRPORT WATER
AND WASTEWATER UTILITIES
TAOS COUNTY, NM

PLAN AND PROFILE 7 - WATER

SHEET 13 OF 33
DWG NO. C-9

JOB NO.
DB21.1270