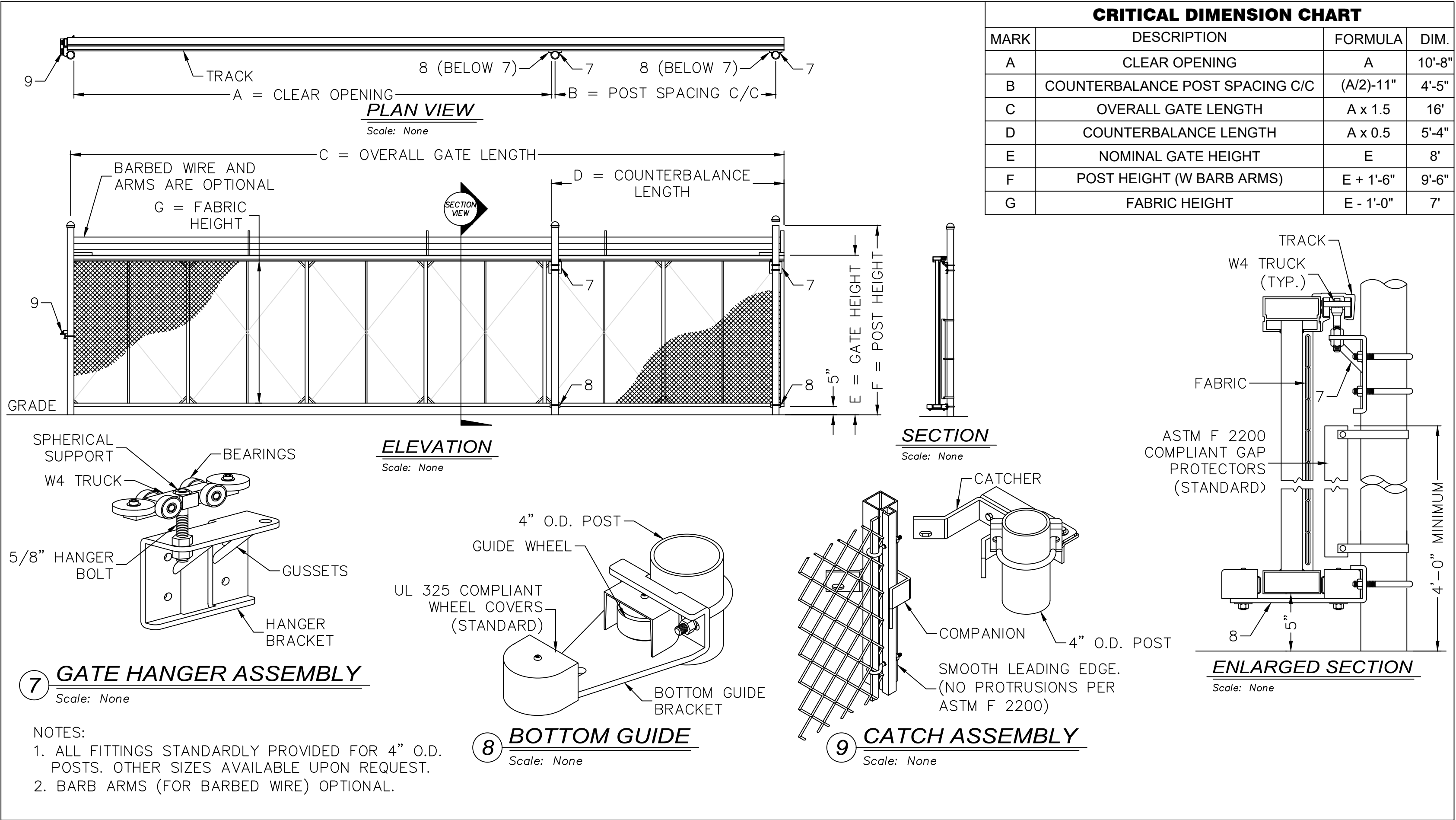


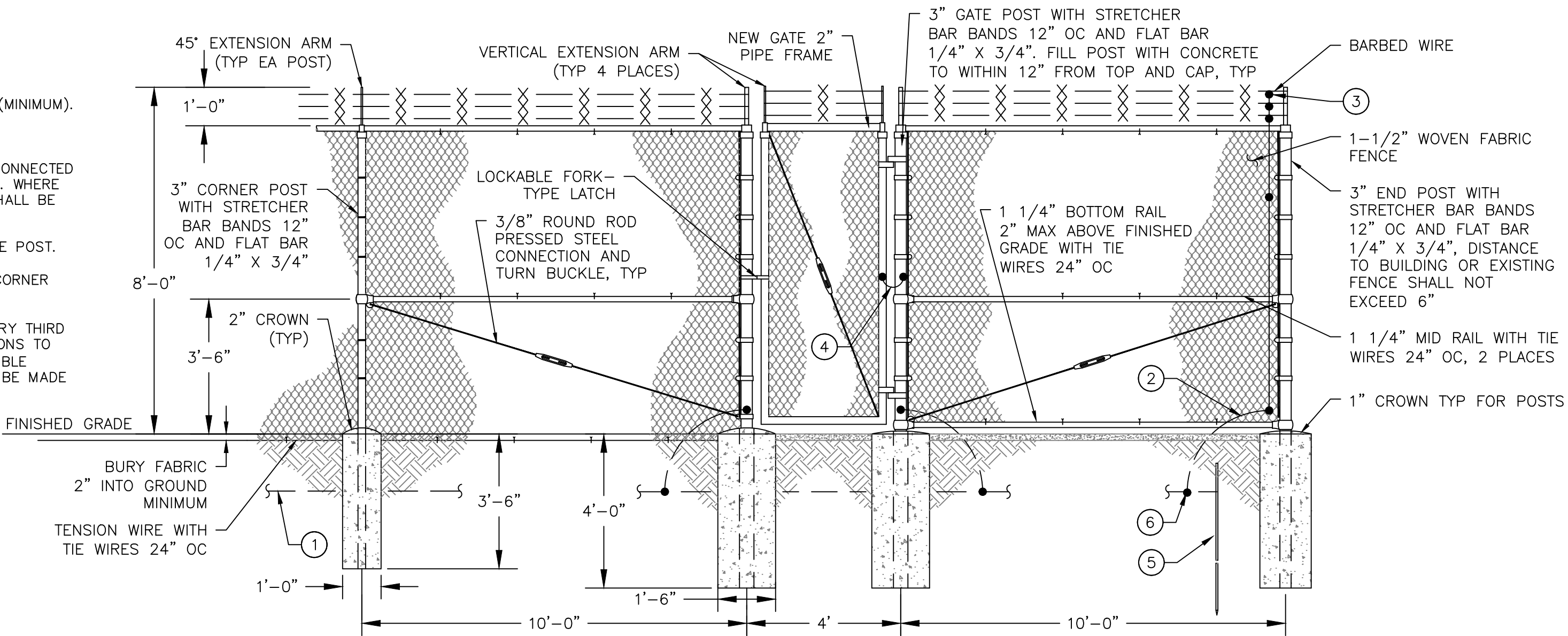
\\DATA\ASB\DATA\PROJECTS\DB21.1270_TAO\CONSTRUCTION\CD\PRODUCTION\ON SITE UTILITIES\C-19 CIVIL DETAILS 2.DWG July 1, 2025 -- 2:14 PM BY: ISABEL RODRIGUEZ



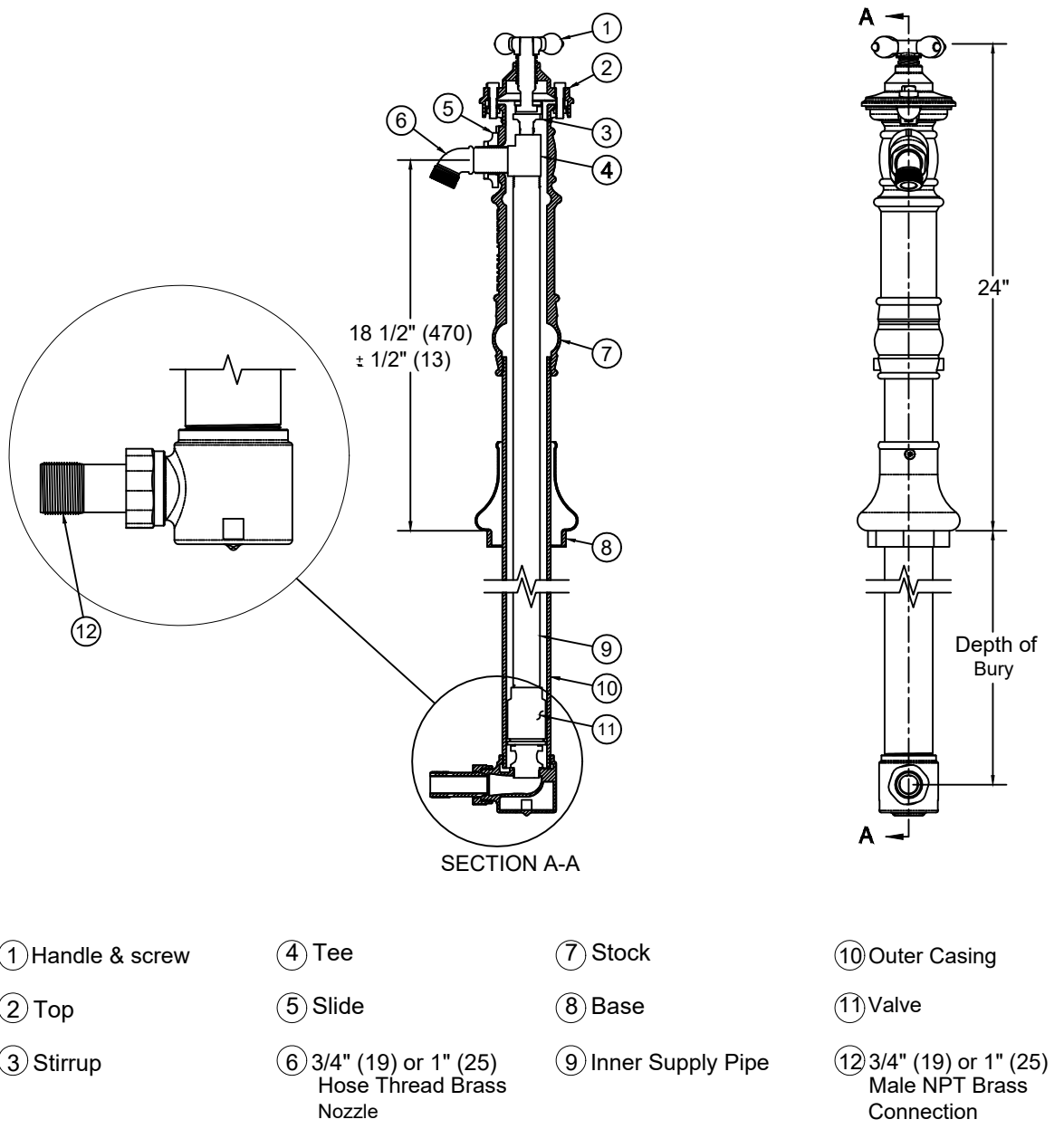
CHAIN LINK SLIDE GATE DETAIL 1
NTS

GROUNDING NOTES

- NO. 2/0 BARE COPPER GROUND CONDUCTOR BURIED 18" (MINIMUM).
- NO. 2/0 BARE COPPER JUMPER.
- NO. 6 BARE COPPER RISER INTERWOVEN IN FABRIC AND CONNECTED TO BARBED WIRE STRANDS AND TO FABRIC AT ONE POINT. WHERE TWO OR MORE GATES ARE PROVIDED, THE NO. 6 RISER SHALL BE INSTALLED IN EACH SECTION BETWEEN GATES.
- FLEXIBLE BRAID BRAZED OR STRAPPED TO GATE AND GATE POST.
- 5/8" X 10.0' COPPER CLAD GROUND ROD INSTALLED AT CORNER POST AND AT 100.0' (MAX) INTERVALS ALONG FENCE.
- FENCE TO BE GROUNDED AT EACH CORNER POST, AT EVERY THIRD POST AND AT ALL GATE POSTS. UNDERGROUND CONNECTIONS TO BE FUSION WELDED (CADWELDED) OR LISTED NON-REVERSIBLE COMPRESSION FITTINGS. ABOVE GROUND CONNECTIONS TO BE MADE WITH CONNECTORS OR STRAPS.



TYPICAL SECURITY FENCE WITH MANWAY DETAIL 2
NTS



YARD HYDRANT 3
NTS

| REV. NO. | DATE | DESCRIPTION | APPROVED BY |
|----------|----------|----------------|-------------|
| Δ | 05/03/25 | ISSUED FOR BID | GP |
| | | | |
| | | | |
| | | | |
| | | | |

| |
|-------------------------|
| DATE OF ISSUE: 05/03/25 |
| DESIGNED BY: ANT |
| DRAWN BY: RT, ANT |
| CHECKED BY: GP |
| APPROVED BY: GP |



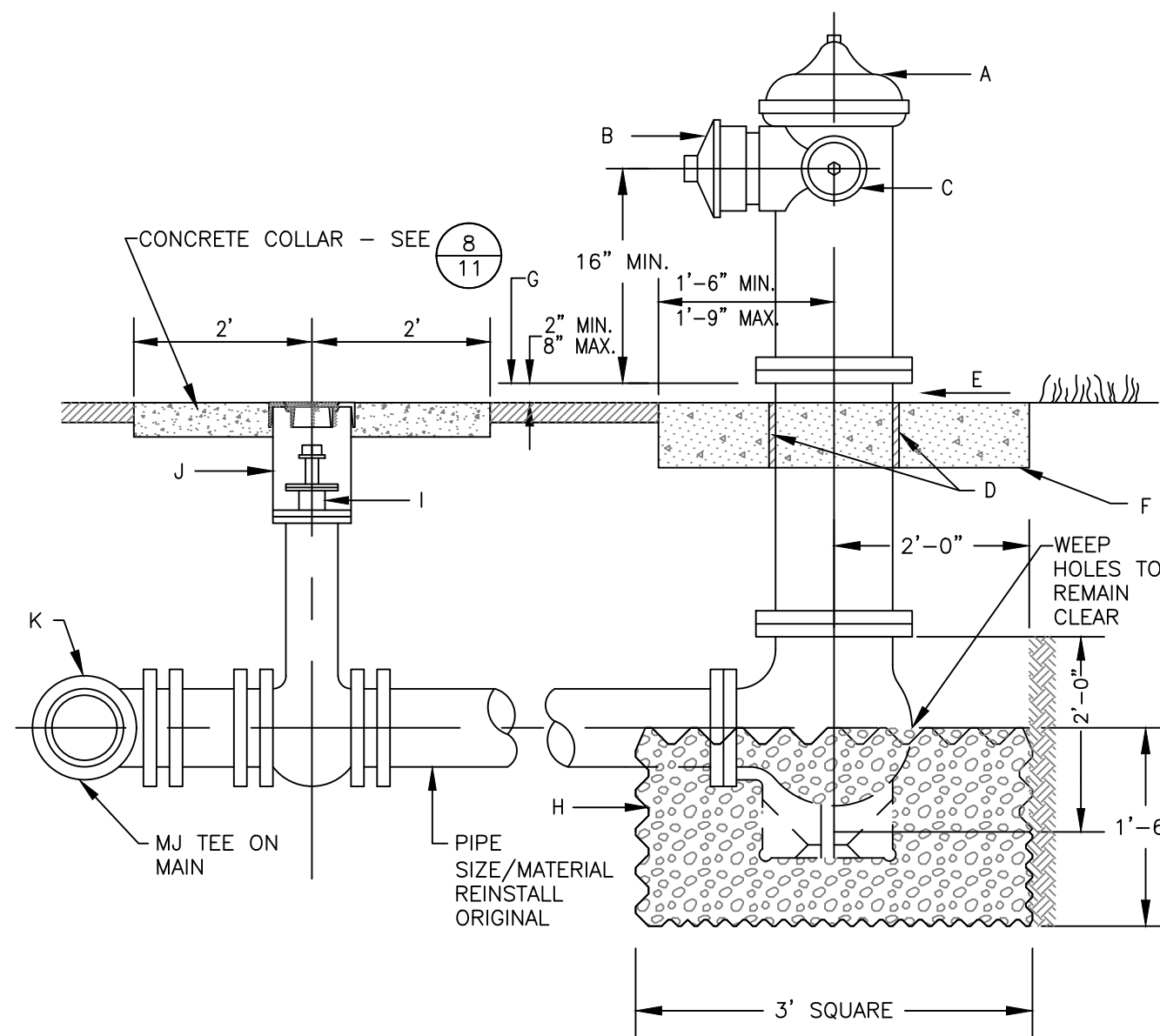
TOWN OF TAO
TAOS COUNTY, NEW MEXICO
EDA 08-79-05544

TAOS REGIONAL AIRPORT WATER
AND WASTEWATER UTILITIES
TAOS COUNTY, NM

CIVIL DETAILS 2

SHEET 24 OF 34
DWG NO. C-19

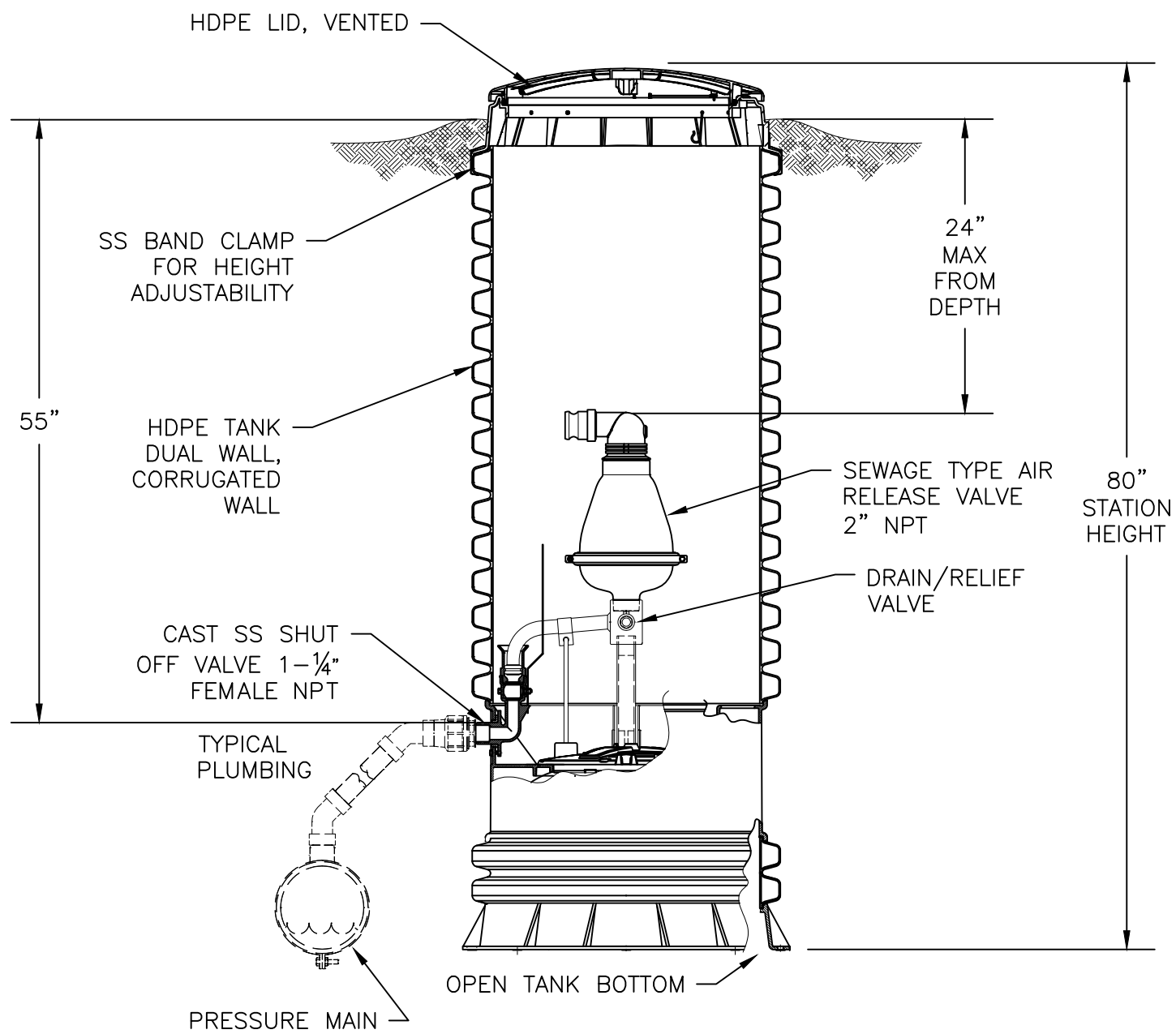
JOB NO.
DB21.1270



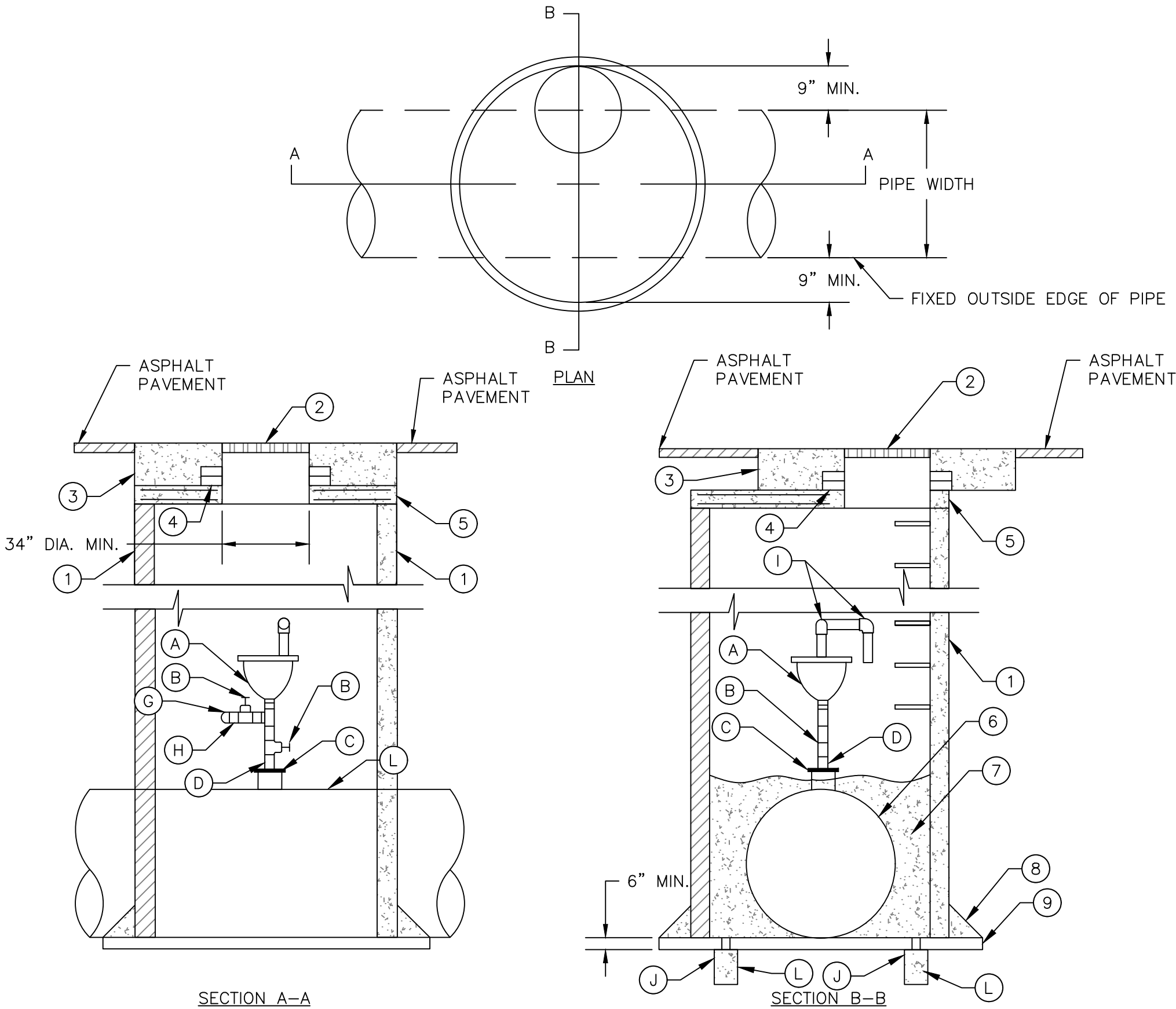
- GENERAL NOTES:**
1. NO OBSTRUCTIONS SHALL BE PERMITTED WITHIN 3 FT. OF FIRE HYDRANT.
 2. PUMPER NOZZLE TO BE SET FACING THE TRAVELED WAY, UNLESS OTHERWISE NOTED ON PLANS, OR AS DIRECTED BY THE ENGINEER.
 3. ALL JOINTS TO BE MECHANICALLY RESTRAINED AS PER DETAIL 2, DWG. C-21.

- CONSTRUCTION NOTES:**
- A. FIRE HYDRANT INSTALL.
 - B. PUMPER NOZZLE 4 1/2".
 - C. HOSE NOZZLE 2 1/2".
 - D. 1/2" EXPANSION JOINT MATERIAL.
 - E. SLOPE 1/4" PER FT.
 - F. 3' X 3' X 6" CONC. SQ. PAD, TO BE CONSTRUCTED AROUND FIRE HYDRANT'S CENTER LINE WHEN NOT LOCATED WITHIN SIDEWALK OR CONC. AREA. FH PAD MAY BE POURED W/VALVE PAD AS ONE UNIT.
 - G. CONTROLLED ELEV. LINE, LEVEL IN ALL DIRECTIONS.
 - H. GRAVEL DRAIN POCKET, COVER TOP SURFACE WITH TAR PAPER.
 - I. VALVE WILL BE CONNECTED TO TEE AT MAIN VALVE PER SPECS.
 - J. VALVE BOX PER SPECS.
 - K. MAIN WATER LINE.
 - L. CONCRETE SHALL HAVE A COMPRESSIVE STRENGTH NOT LESS THAN 3500 PSI @ 28 DAYS, HAND PLACED. A MAXIMUM OF 520 LBS/CY PORTLAND CEMENT/CONCRETE WILL BE USED. A MAXIMUM WATER TO CEMENT/FINE AGGREGATE RATIO OF 0.45 IS REQUIRED. CEMENT SHALL BE TYPE I OR TYPE II.

FIRE HYDRANT DETAIL 1
NTS



SEWER AIR RELEASE VALVE 3
NTS



- MATERIALS LIST:**
- A. COMBINATION AIR VACUUM RELEASE VALVE
 - B. GATE VALVE, SAME SIZE AS COMBINATION AIR AND VACUUM RELEASE VALVE INLET.
 - C. MINIMUM 6" FLANGE NOZZLE OR FLANGE TAPPING SADDLE. PROVIDE BLIND FLANGE TAPPED FOR THREADED NIPPLE WHERE AIR/ VAC VALVE IS SHOWN TO BE LESS THAN 6".
 - D. BRASS OR SS NIPPLE
 - E. 1" BALL VALVE
 - F. 1" AIR RELEASE VALVE
 - G. THREADED CAP
 - H. THREADED NIPPLE FOR VENT AND HOSE CONNECTION
 - I. 90° ELBOW
 - J. 4" DIA. SCHEDULE 40 PVC PIPE SLEEVE THROUGH MANHOLE BASE
 - K. 12" X 12" X 18" DEEP 1" CLEAN GRAVEL ASTM C33, NO. 57 GRAVEL
 - L. WATER MAIN

- CONSTRUCTION NOTES:**
1. POURED CONCRETE, OR PRECAST REINFORCED CONCRETE
 2. USE 36" MH FRAME AND COVER. COVER MARKED "WATER"
 3. CONCRETE COLLAR PER STD. DEG. 2461
 4. USE ADJUSTMENT RINGS OR MAX. 2 COURSES GR MS BRICK FOR ADJUSTMENT OF MH FRAME TO PAVEMENT GRADE.
 5. PRECAST CONCRETE COVER. EXCEPT OPENING SHALL BE 34" DIAMETER MINIMUM.
 6. CUT MANHOLE TO PROVIDE A 4" CLEARANCE AROUND WATER MAIN
 7. 1" CLEAN GRAVEL TO TOP OF MAIN
 8. 6" GROUT FILLET AROUND BASE
 9. CONCRETE BASE TO BE POURED IN PLACE USING #4 BARS AT 12" OC EACH WAY.

| REVISIONS | NM | APWA |
|-----------|--------------------------|-----------|
| | WATER | |
| | AIR/VACUUM RELEASE VALVE | |
| | DWG. 2350 | FEB. 2006 |

WATER AIR/VACUUM RELEASE VALVE DETAIL 2
NTS

| REV. NO. | DATE | DESCRIPTION | APPROVED BY |
|----------|----------|----------------------------------|-------------|
| 1 | 05/03/25 | ISSUED FOR BID | GP |
| 2 | 07/02/25 | DETAIL 2 REVISED, DETAIL 3 ADDED | GP |
| | | | |
| | | | |
| | | | |

| |
|---------------------------|
| DATE OF ISSUE: 07/02/2025 |
| DESIGNED BY: ANT |
| DRAWN BY: RT, ANT |
| CHECKED BY: GP |
| APPROVED BY: GP |



TOWN OF TAOS
TAOS COUNTY, NEW MEXICO
EDA 08-79-05544

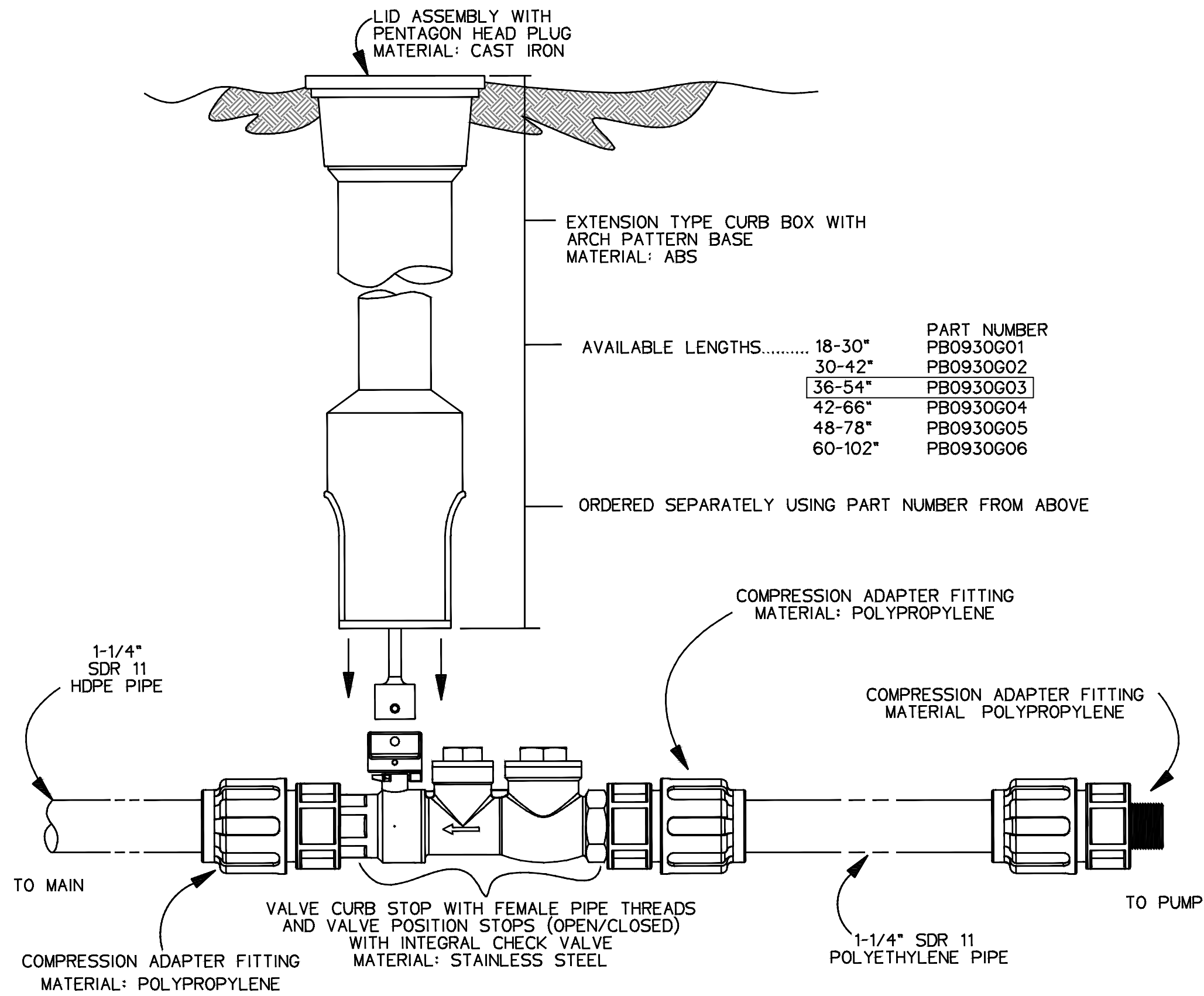
TAOS REGIONAL AIRPORT WATER
AND WASTEWATER UTILITIES
TAOS COUNTY, NM

CIVIL DETAIL 3

SHEET 25 OF 34
DWG NO. C-20

JOB NO.
DB21.1270

\\DATA\ASB\DATA\PROJECTS\DB21.1270_TAOs_AIRPORT-ABEYTA-CONSTRUCTION\CAD\PRODUCTION\ON SITE UTILITIES\C-21_CIVIL DETAILS 4.DWG July 1, 2025 -- 2:14 PM BY: ISABEL RODRIGUEZ



SPECIFY END CONNECTION REQUIRED

NOTES:

- 1 SS CURB STOP/CHECK VALVE AND FITTINGS ARE PROVIDED SEPARATELY; TO BE ASSEMBLED BY OTHERS
2. TO ASSEMBLE, APPLY A DOUBLE LAYER OF TEFLON TAPE, AND A LAYER OF PIPE DOPE TO THE THREADS ON THE PLASTIC FITTINGS AND INSTALL PER THE MANUFACTURER'S INSTRUCTIONS
3. ASSEMBLY IS TO BE PRESSURE TESTED
4. ASSEMBLY IS TO BE USED WITH SDR11 HDPE PIPE
5. TO ORDER SS LATERAL KIT, USE PART NUMBER NC0193G01
6. CURB BOX IS TO BE ORDERED SEPARATELY, SEE ABOVE

*FOR SS FITTING INTO SS THREAD, USE PIPE DOPE OR TEFLON TAPE, NOT BOTH

*KIT PARTS ARE NOT ASSEMBLED

STAINLESS STEEL LATERAL KIT

NTS

TABLE A

| | LENGTH RESTRAINED (L) | | | | | | | | | | |
|-------|-----------------------|-----|-----|-----|-----|------|------|------|------|------|--|
| | LARGE | | | | | | | | | | |
| | 3" | 4" | 6" | 8" | 10" | 12" | 14" | 16" | 18" | 24" | |
| SMALL | 3" | 15' | 45' | 72' | 93' | 115' | 138' | 156' | 175' | 231' | |
| | 4" | | 35' | 64' | 87' | 110' | 134' | 152' | 171' | 229' | |
| | 6" | | | 37' | 65' | 92' | 118' | 138' | 159' | 220' | |
| | 8" | | | | 36' | 67' | 96' | 120' | 143' | 208' | |
| | 10" | | | | | 37' | 70' | 98' | 123' | 193' | |
| | 12" | | | | | | 38' | 70' | 99' | 175' | |
| | 14" | | | | | | | 38' | 70' | 154' | |
| | 16" | | | | | | | | 38' | 129' | |
| | 18" | | | | | | | | | 102' | |

GENERAL DESIGN RESTRAINT NOTES:

1. BASIS OF DESIGN - EBAA IRON
2. PIPE MATERIAL: PVC
3. SOIL TYPE: SC, CLAYEY SAND, SANDY CLAY
4. TRENCH TYPE: 4
5. TEST PRESSURE: 250 PSI
6. FACTOR OF SAFETY: 1.5 TO 1
7. DEPTH OF BURY: 4 FEET UNLESS OTHERWISE STATED
8. ALL JOINTS WITHIN LENGTHS ARE TO BE RESTRAINED
9. RESTRAINTS SHALL BE THE EBAA IRON SERIES 1800 OR ENGINEER APPROVED EQUAL MECHANICAL JOINT RESTRAINTS TO BE USED ON ALL CONNECTIONS AND FITTINGS.

TABLE A NOTES:

1. FLOW FROM LARGE SIZE TO SMALL SIZE PIPE.

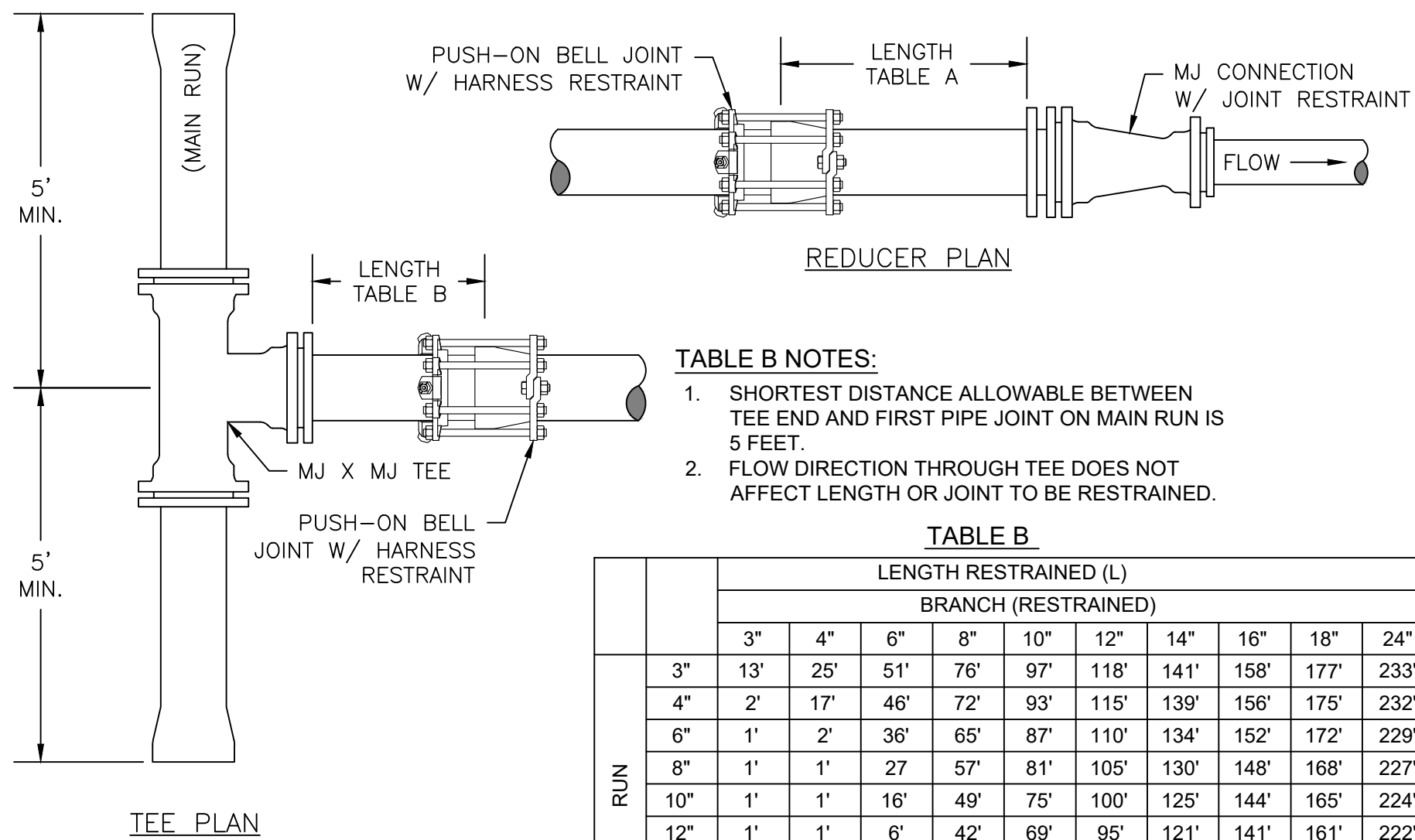


TABLE B NOTES:

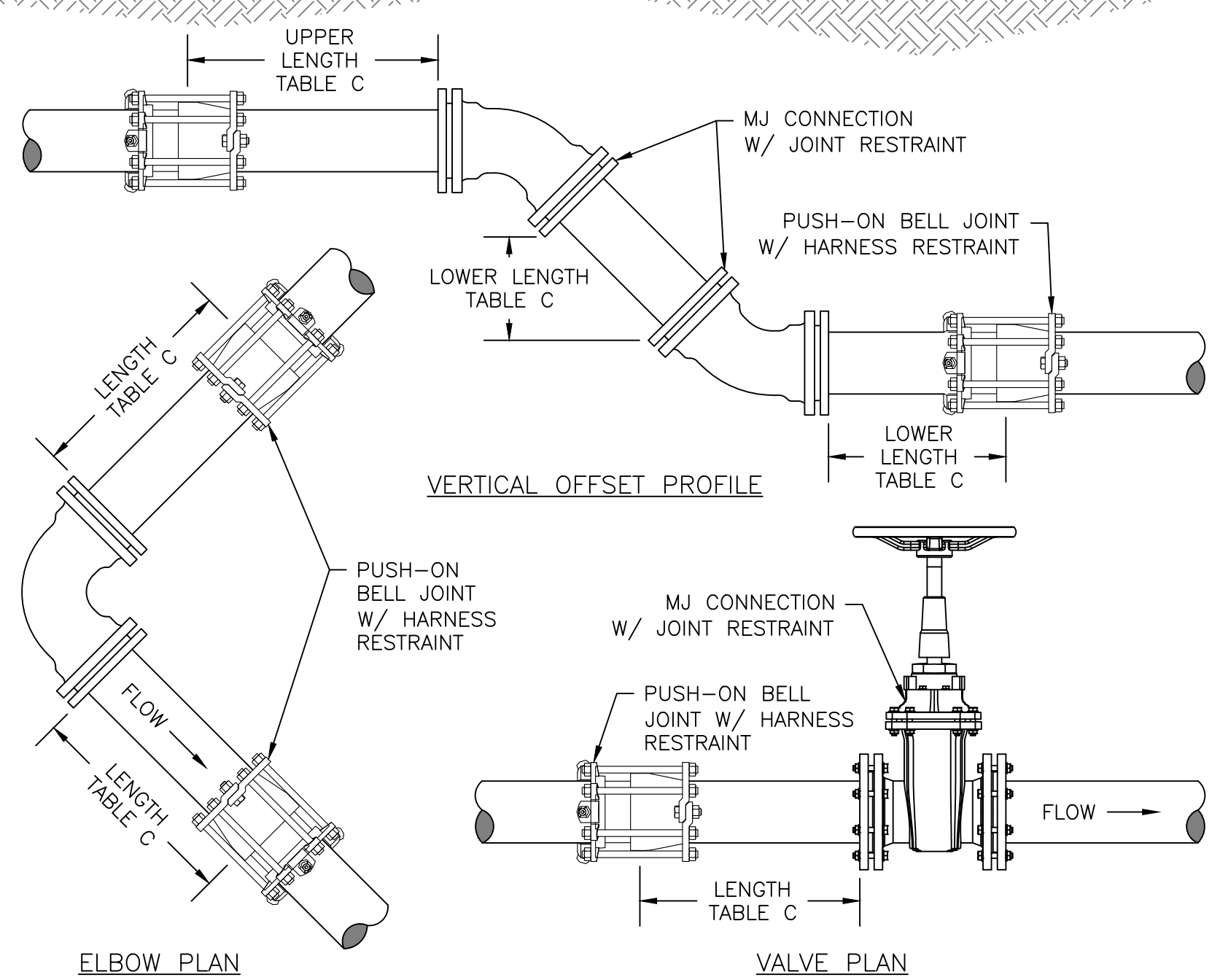
1. SHORTEST DISTANCE ALLOWABLE BETWEEN TEE END AND FIRST PIPE JOINT ON MAIN RUN IS 5 FEET.
2. FLOW DIRECTION THROUGH TEE DOES NOT AFFECT LENGTH OR JOINT TO BE RESTRAINED.

TABLE B

| | LENGTH RESTRAINED (L) | | | | | | | | | | |
|-----|-----------------------|-----|-----|-----|-----|-----|------|------|------|------|------|
| | BRANCH (RESTRAINED) | | | | | | | | | | |
| | 3" | 4" | 6" | 8" | 10" | 12" | 14" | 16" | 18" | 24" | |
| RUN | 3" | 13' | 25' | 51' | 76' | 97' | 118' | 141' | 158' | 177' | 233' |
| | 4" | 2' | 17' | 46' | 72' | 93' | 115' | 139' | 156' | 175' | 232' |
| | 6" | 1' | 2' | 36' | 65' | 87' | 110' | 134' | 152' | 172' | 229' |
| | 8" | 1' | 1' | 27' | 57' | 81' | 105' | 130' | 148' | 168' | 227' |
| | 10" | 1' | 1' | 16' | 49' | 75' | 100' | 125' | 144' | 165' | 224' |
| | 12" | 1' | 1' | 6' | 42' | 69' | 95' | 121' | 141' | 161' | 222' |
| | 14" | 1' | 1' | 1' | 35' | 63' | 90' | 117' | 137' | 158' | 219' |
| | 16" | 1' | 1' | 1' | 25' | 56' | 84' | 111' | 132' | 154' | 216' |
| | 18" | 1' | 1' | 1' | 17' | 49' | 78' | 106' | 128' | 150' | 213' |
| | 24" | 1' | 1' | 1' | 1' | 28' | 61' | 91' | 115' | 139' | 205' |
| | | | | | | | | | | | |

TABLE C

| LENGTH TO BE RESTRAINED (L) | | | | | | | | |
|-----------------------------|------------------|------------------|----------------------|----------------------|-------------------------------|-----------------------------------|-----------------------------------|-------------------------|
| | 90° HORIZ. ELBOW | 45° HORIZ. ELBOW | 22 1/2° HORIZ. ELBOW | 11 1/4° HORIZ. ELBOW | 45° VERT. OFFSET 3.5' TO 5.0' | 22 1/2° VERT. OFFSET 3.5' TO 5.0' | 11 1/4° VERT. OFFSET 3.5' TO 5.0' | DEAD END/ IN-LINE VALVE |
| 3" | 16' | 7' | 3' | 2' | UPPER-23' LOWER-7' | UPPER-11' LOWER-4' | UPPER-6' LOWER-2' | 43' |
| 4" | 17' | 7' | 4' | 2' | UPPER-25' LOWER-8' | UPPER-12' LOWER-4' | UPPER-6' LOWER-2' | 47' |
| 6" | 24' | 10' | 5' | 3' | UPPER-35' LOWER-11' | UPPER-17' LOWER-5' | UPPER-9' LOWER-3' | 67' |
| 8" | 31' | 13' | 7' | 4' | UPPER-46' LOWER-14' | UPPER-22' LOWER-7' | UPPER-11' LOWER-4' | 88' |
| 10" | 37' | 16' | 8' | 4' | UPPER-55' LOWER-17' | UPPER-27' LOWER-8' | UPPER-13' LOWER-4' | 106' |
| 12" | 44' | 18' | 9' | 5' | UPPER-65' LOWER-20' | UPPER-31' LOWER-10' | UPPER-16' LOWER-5' | 126' |
| 14" | 51' | 22' | 11' | 5' | UPPER-76' LOWER-22' | UPPER-37' LOWER-6' | UPPER-18' LOWER-3' | 148' |
| 16" | 56' | 24' | 12' | 6' | UPPER-84' LOWER-25' | UPPER-41' LOWER-12' | UPPER-20' LOWER-6' | 164' |
| 18" | 62' | 26' | 13' | 7' | UPPER-93' LOWER-28' | UPPER-45' LOWER-14' | UPPER-23' LOWER-7' | 182' |
| 24" | 80' | 33' | 16' | 8' | UPPER-120' LOWER-36' | UPPER-58' LOWER-17' | UPPER-29' LOWER-9' | 237' |



RESTRAINED LENGTHS FOR PRESSURE PIPE

NTS

2

| REV. NO. | DATE | DESCRIPTION | APPROVED BY |
|----------|----------|------------------|-------------|
| 1 | 05/03/25 | ISSUED FOR BID | GP |
| 2 | 07/02/25 | DETAIL 1 REVISED | GP |
| | | | |
| | | | |
| | | | |
| | | | |

DATE OF ISSUE: 07/02/2025
DESIGNED BY: ANT
DRAWN BY: RT, ANT
CHECKED BY: GP
APPROVED BY: GP

DBS&A
a Geo-Logic Company
6501 Americas Parkway NE Suite 200
Albuquerque, NM 87110



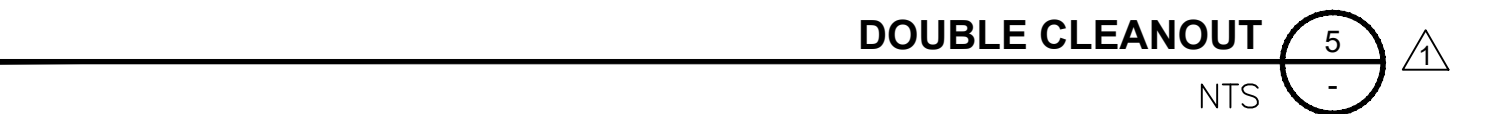
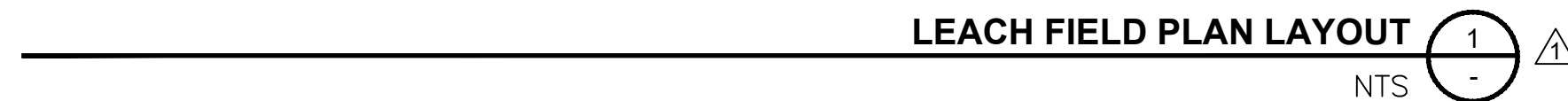
TOWN OF TAOS
TAOS COUNTY, NEW MEXICO
EDA 08-79-05544

TAOS REGIONAL AIRPORT WATER
AND WASTEWATER UTILITIES
TAOS COUNTY, NM

CIVIL DETAILS 4

SHEET 26 OF 34
DWG NO. C-21

JOB NO.
DB21.1270

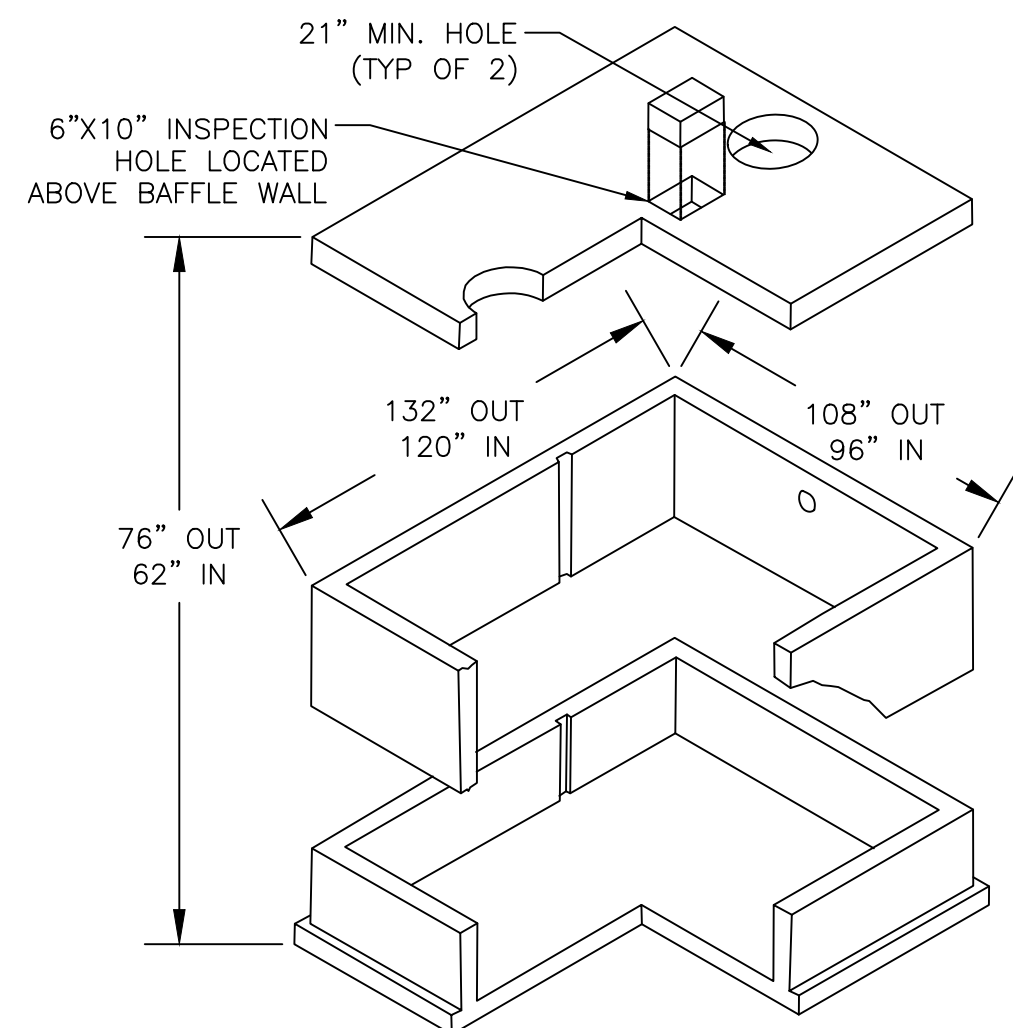


JOB NO.
DB21.1270

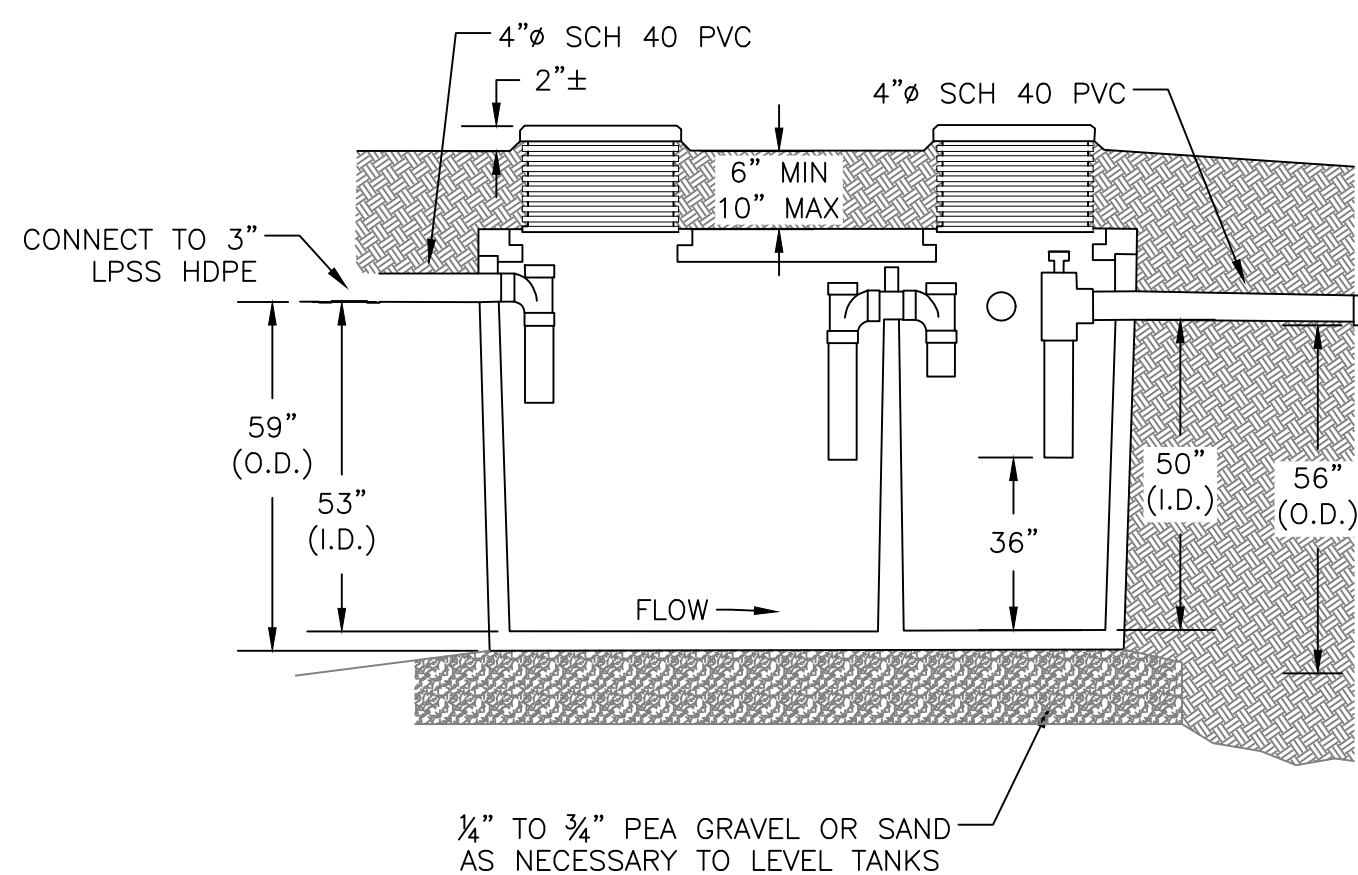
NTS

1. EXCAVATION BOTTOM SHALL BE 2' WIDER AND 2' LONGER THAN TOTAL OUTSIDE DIMENSIONS.
2. INSPECT BOTTOM OF EXCAVATION TO VERIFY SUITABILITY OF NATIVE SOIL FOR FRP BASIN INSTALLATION. CLAY SOIL AND LARGE PROTRUDING, OR SHARP STONES OR OTHER SIMILAR OBJECTS THAT MAY DAMAGE TANK ARE NOT SUITABLE.
3. THE TANK MAY BE BED EITHER IN SUITABLE NATIVE SOIL OR A MIN. 4-INCH LAYER OF FEA STONE, SAND, GRAVEL, CRUSHER FINES OR OTHER SIMILAR GRANULAR MATERIAL HAVING PARTICLES LESS THAN 3-INCHES IN DIA.
4. ALL EFFLUENT PUMP STATION COMPONENTS SHALL MEET REQUIREMENTS OF NMAC 20.7.3.503.

1. BACKFILL WITH SUITABLE NATIVE SOIL. SUITABLE SOIL SHALL BE FREE-FLOWING AND SHOULD NOT HAVE STONES GREATER THAN 3-IN IN DIA. OR CLODS THAT DO NOT BREAK APART DURING PLACEMENT AND COMPACTION.
2. DO NOT BACKFILL TOP OF BASIN BEFORE SIDEWALLS ARE COMPLETELY BACKFILLED.
3. CONTINUE TO PLACE BACKFILL ALONG THE SIDEWALLS IN 12-IN LIFTS.
4. COMPACT BACKFILL MATERIAL EITHER BY HAND TAMPING OR MECHANICAL COMPACTOR. COMPACT EACH LIFT PRIOR TO PLACEMENT OF NEXT LIFT. COMPACT BACKFILL FROM BASIN WALLS TO EXCAVATION SIDEWALLS.
5. COMPLETE BACKFILLING AND GRADE THE AREA.



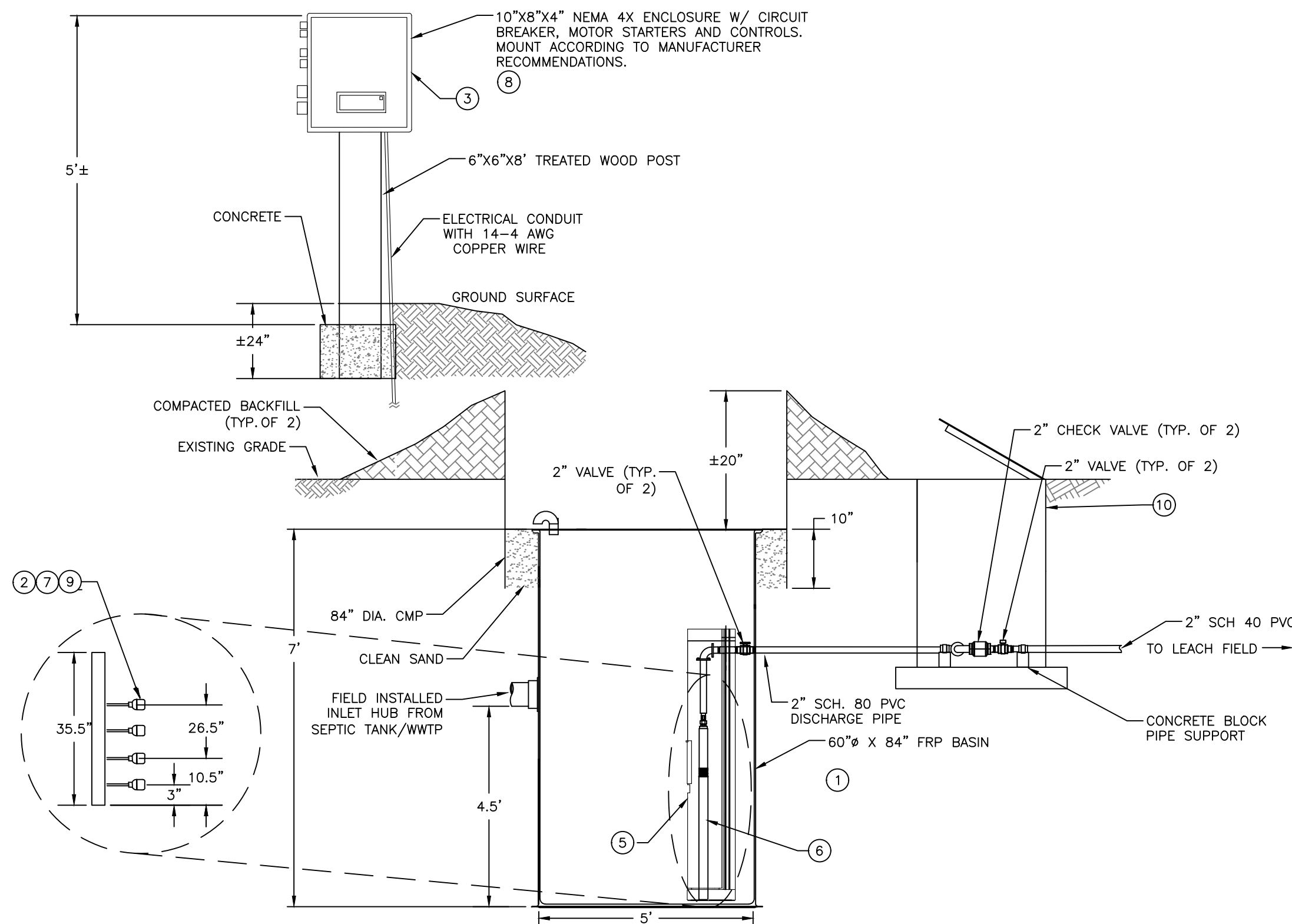
NTS



NTS

1. SEPTIC TANK EXCAVATION BOTTOM SHALL BE 2' WIDER AND 2' LONGER THAN TOTAL OUTSIDE DIMENSIONS.
2. INSPECT BOTTOM OF EXCAVATION TO VERIFY SUITABILITY OF NATIVE SOIL FOR TANK INSTALLATION. CLAY SOIL AND LARGE PROTRUDING, OR SHARP STONES OR OTHER SIMILAR OBJECTS THAT MAY DAMAGE TANK ARE NOT SUITABLE.
3. THE TANK MAY BE BED EITHER IN SUITABLE NATIVE SOIL OR A MIN. 4-INCH LAYER OF PEA STONE, SAND, GRAVEL, OR OTHER SIMILAR GRANULAR MATERIAL HAVING PARTICLES LESS THAN 3-INCHES IN DIA.
4. TANKS SHALL BE H-20 RATED AND MEET ALL REQUIREMENTS OF NMAC 20.7.3.502.

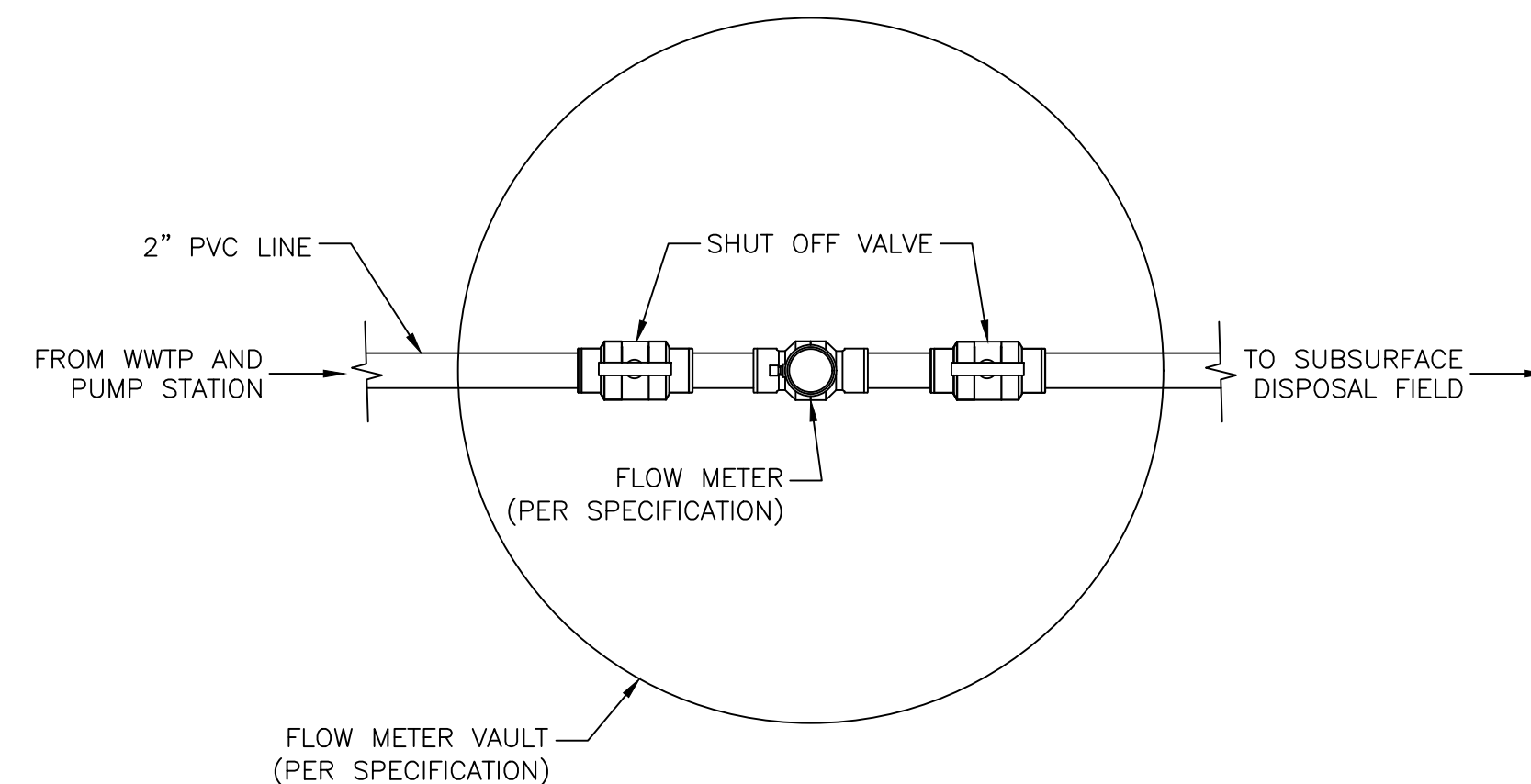
1. BACKFILL WITH SUITABLE NATIVE SOIL. SUITABLE SOIL SHALL BE FREE—FLOWING AND SHOULD NOT HAVE STONES GREATER THAN 3-IN IN DIA. OR CLODS THAT DO NOT BREAK APART DURING PLACEMENT AND COMPACTION.
2. DO NOT BACKFILL TOP OF TANK BEFORE SIDEWALLS ARE COMPLETELY BACKFILLED.
3. CONTINUE TO PLACE BACKFILL ALONG THE SIDEWALLS IN 12-IN LIFTS.
4. COMPACT BACKFILL MATERIAL EITHER BY HAND TAMPING OR MECHANICAL COMPACTOR. COMPACT EACH LIFT PRIOR TO PLACEMENT OF NEXT LIFT. COMPACT BACKFILL FROM TANK WALLS TO EXCAVATION SIDEWALLS.
5. COMPLETE BACKFILLING AND GRADE THE AREA.




NTS

- ① DUPLEX EFFLUENT PUMP, PUMP VAULT, PUMP BASIN, VALVE VAULT, HOUSING, AND CONTROL PANEL TO BE PROVIDED BY SAME MANUFACTURER.
- ② FLOATS TO BE SET AS DIRECTED BY ENGINEER IN THE FIELD.
- ③ CONNECT TO 1PH/230V/60HZ POWER.
- ④ ZOELLER BASIN & AL HATCH COVER 60" DIA. X 84" TALL
- ⑤ ZOELLER 5041-0001 FILTERED STEP VAULT 60" STANDARD (TYP. OF 2)

- ⑥ ZOELLER TURBINE, EFFLUENT PUMP 19 GPM 1/2 HP, 230V/PH, 25' CORD
- ⑦ ZOELLER 10-1674 FLOAT TREE FOUR HANGER
- ⑧ ZOELLER CONTROL PANEL DUP, 230V/1PH, DEMAND W/3 FLOATS, INNER DOOR
- ⑨ ZOELLER 10-0743 5A 250V MECH FLOAT SWITCH W/180 CORD L/PLUG
- ⑩ ZOELLER BASIN & AL HATCH COVER, 48" DIA. X 48" TALL.



NTS

| REV. NO. | DATE | DESCRIPTION | APPROVED BY |
|--|----------|----------------|-------------|
|  | 05/03/25 | ISSUED FOR BID | GP |
| | | | |
| | | | |
| | | | |
| | | | |
| | | | |

DATE OF ISSUE: 05/03/25

DESIGNED BY: ANT

DRAWN BY: RT, ANT

CHECKED BY: GP

APPROVED BY: GP



TOWN OF TAOS
TAOS COUNTY, NEW MEXICO
EDA 08-79-05544

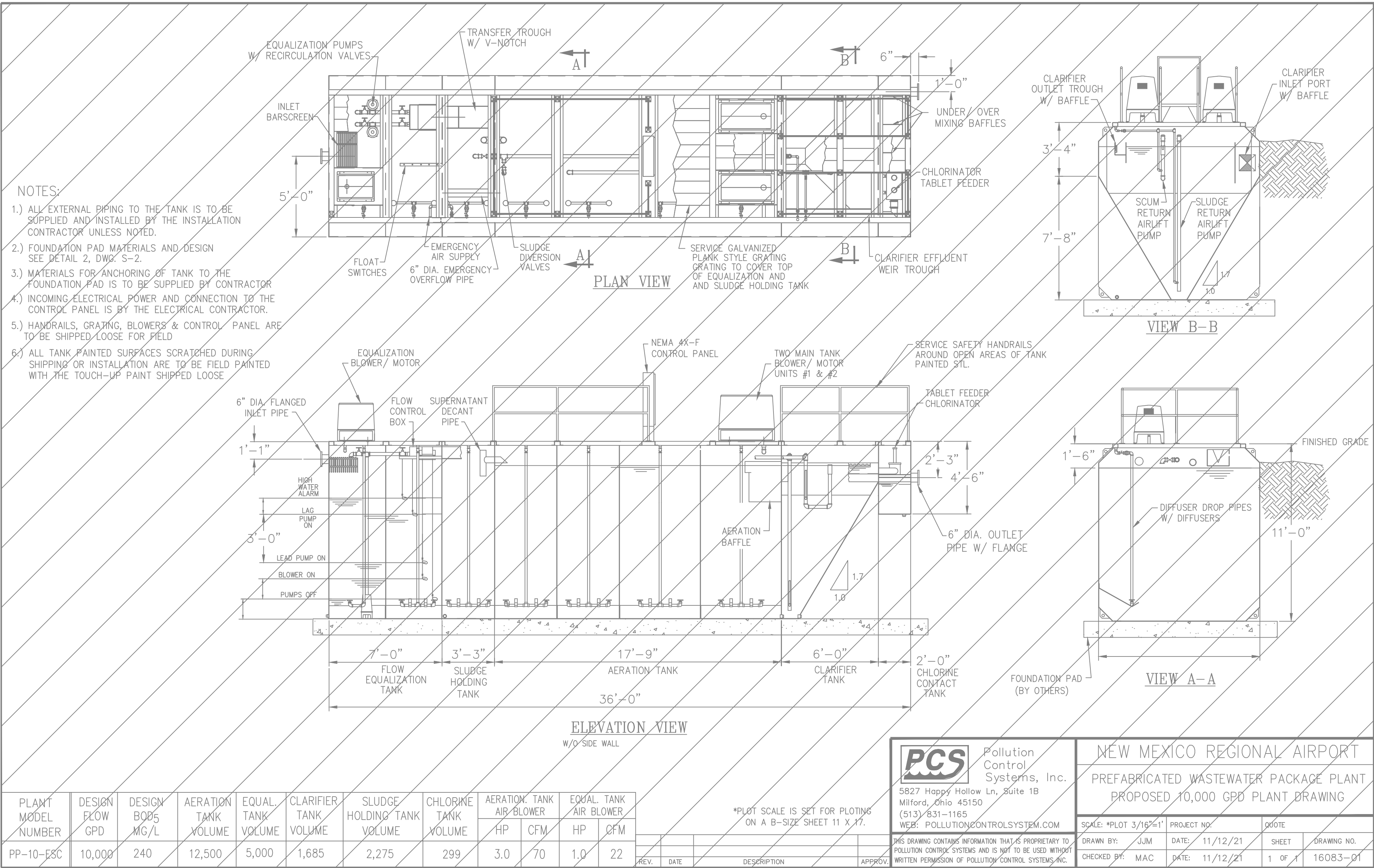
TAOS REGIONAL AIRPORT WATER
AND WASTEWATER UTILITIES
TAOS COUNTY, NM

CIVIL DETAILS 6

SHEET 28 OF 34
DWG NO. C-23

JOB NO.
DB21.1270

S:\PROJECTS\DB21.1270_Taos_Airport-AEYTA-CONSTRUCTION\CAD\PRODUCTION\ONSITE UTILITIES\C-24_CIVIL DETAILS 7.DWG July 2, 2025 -- 2:14 PM BY: ISABEL RODRIGUEZ



| PLANT MODEL NUMBER | DESIGN FLOW GPD | DESIGN BOD5 MG/L | AERATION TANK VOLUME | EQUAL. TANK VOLUME | CLARIFIER TANK VOLUME | SLUDGE HOLDING TANK VOLUME | CHLORINE TANK VOLUME | AERATION TANK AIR BLOWER | | EQUAL. TANK AIR BLOWER | |
|--------------------|-----------------|------------------|----------------------|--------------------|-----------------------|----------------------------|----------------------|--------------------------|-----|------------------------|-----|
| | | | | | | | | HP | CFM | HP | CFM |
| PP-10-ESC | 10,000 | 240 | 12,500 | 5,000 | 1,685 | 2,275 | 299 | 3.0 | 70 | 1.0 | 22 |

*PLOT SCALE IS SET FOR PLOTTING ON A B-SIZE SHEET 11 X 17.

PCS
Pollution Control Systems, Inc.
5827 Happy Hollow Ln., Suite 1B
Milford, Ohio 45150
(513) 831-1165
WEB: POLLUTIONCONTROLSYSTEMS.COM

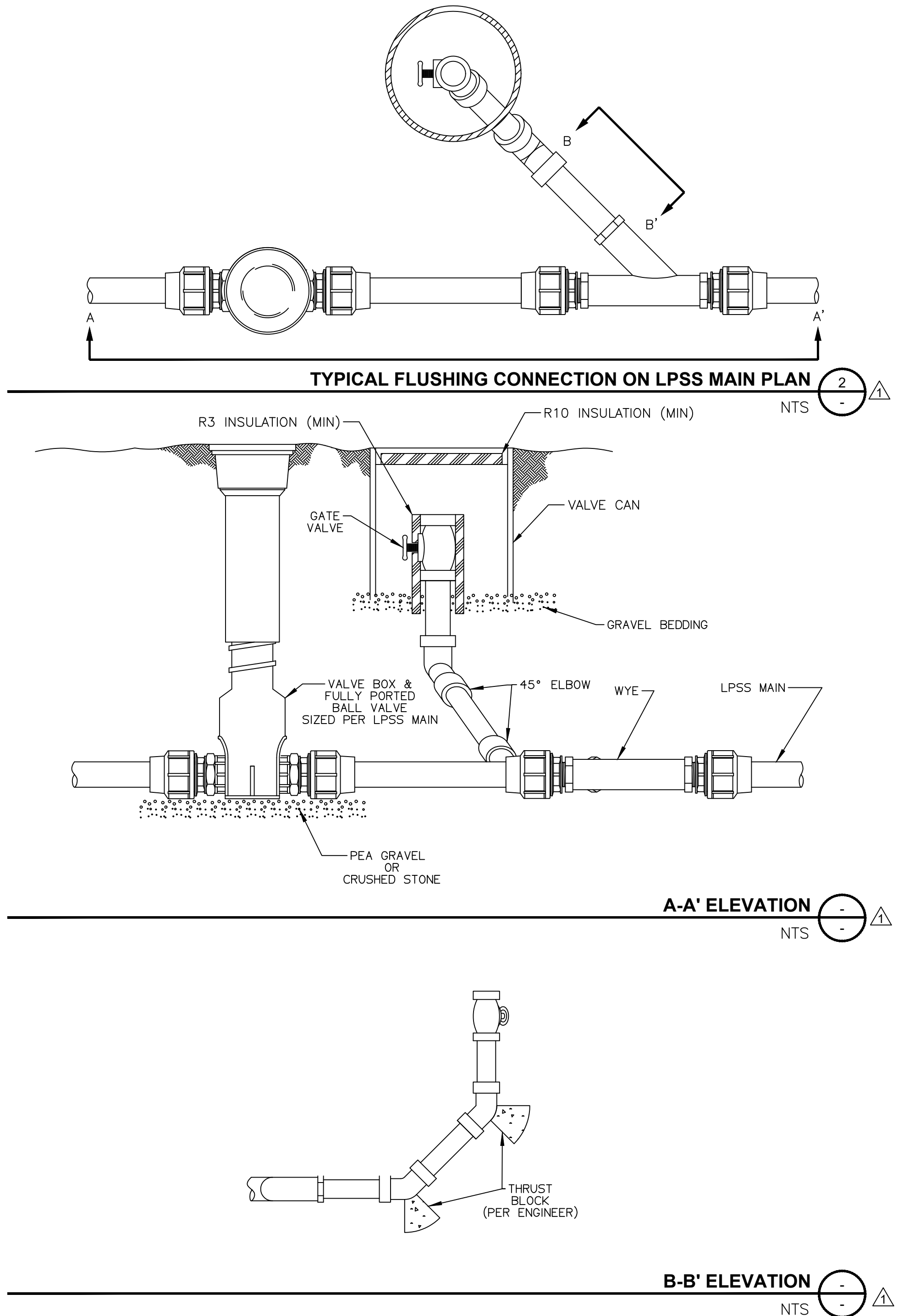
NEW MEXICO REGIONAL AIRPORT
PREFABRICATED WASTEWATER PACKAGE PLANT
PROPOSED 10,000 GPD PLANT DRAWING

| | | | | | |
|-----------------------|----------------|----------|----------|--------|-------------|
| SCALE: *PLOT 3/16"=1' | PROJECT NO. | DATE | DATE | SHEET | DRAWING NO. |
| DRAWN BY: JJM | DATE: 11/12/21 | 11/12/21 | 11/12/21 | 1 OF 1 | 16083-01 |
| CHECKED BY: MAC | DATE: 11/12/21 | | | | |

THIS DRAWING CONTAINS INFORMATION THAT IS PROPRIETARY TO POLLUTION CONTROL SYSTEMS AND IS NOT TO BE USED WITHOUT WRITTEN PERMISSION OF POLLUTION CONTROL SYSTEMS, INC.

PREFABRICATED WASTEWATER PACKAGE PLANT
FUTURE (BY OTHERS)

1
NTS



| REV. NO. | DATE | DESCRIPTION | APPROVED BY |
|----------|----------|-----------------|-------------|
| 1 | 05/03/25 | ISSUED FOR BID | GP |
| 2 | 07/02/25 | DETAILS REVISED | GP |

| |
|---------------------------|
| DATE OF ISSUE: 07/02/2025 |
| DESIGNED BY: ANT |
| DRAWN BY: RT, ANT |
| CHECKED BY: GP |
| APPROVED BY: GP |

DBS&A
a Geo-Logic Company
6501 Americas Parkway NE Suite 200
Albuquerque, NM 87110

TOWN OF TAOS
TAOS COUNTY, NEW MEXICO
EDA 08-79-05544

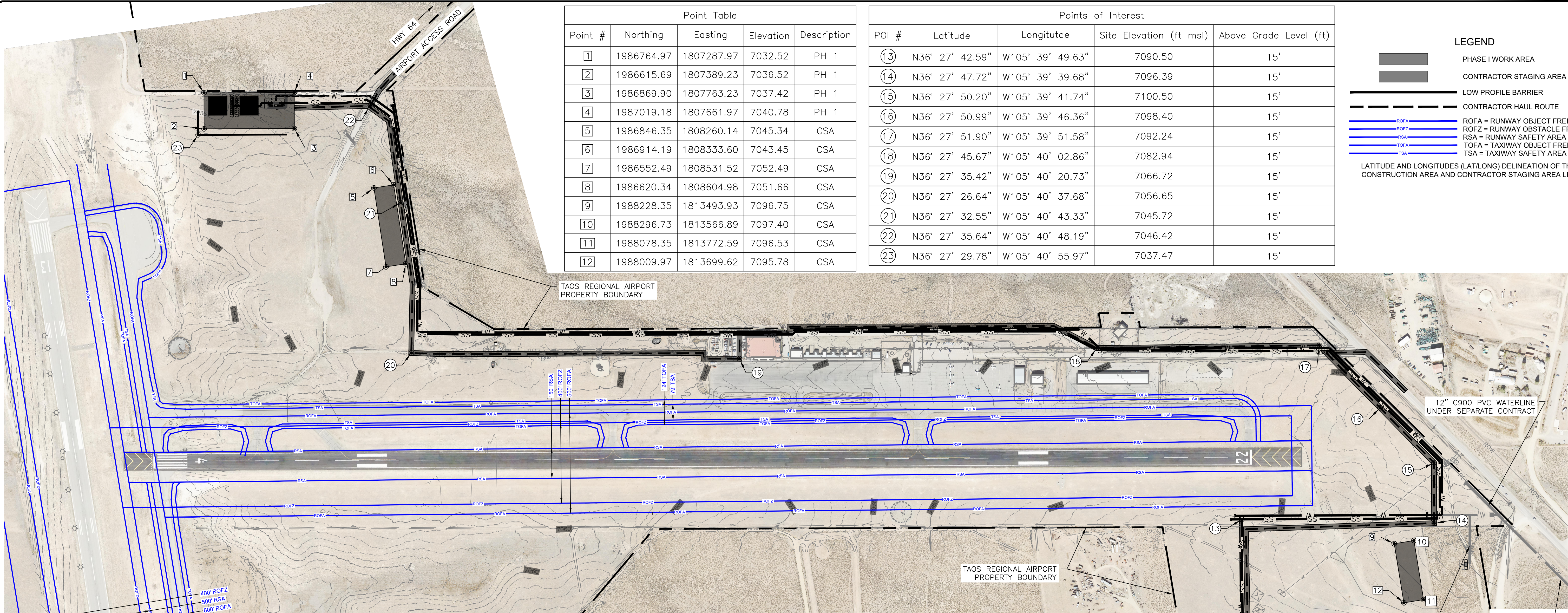
TAOS REGIONAL AIRPORT WATER
AND WASTEWATER UTILITIES
TAOS COUNTY, NM

CIVIL DETAILS 7

SHEET 29 OF 34
DWG NO. C-24

JOB NO.
DB21.1270

\\DATA\ASBQ\DATA\PROJECTS\DB21.1270_TAOs_AIRPORT-ABETLA-CONSTRUCTION\CAD\PRODUCTION\ON SITE UTILITIES\C-25 CONSTRUCTION SAFETY & PHASING PLANDWG July 1, 2025 - 2:14 PM BY: ISABEL RODRIGUEZ



| Point Table | | | | |
|-------------|------------|------------|-----------|-------------|
| Point # | Northing | Easting | Elevation | Description |
| 1 | 1986764.97 | 1807287.97 | 7032.52 | PH 1 |
| 2 | 1986615.69 | 1807389.23 | 7036.52 | PH 1 |
| 3 | 1986869.90 | 1807763.23 | 7037.42 | PH 1 |
| 4 | 1987019.18 | 1807661.97 | 7040.78 | PH 1 |
| 5 | 1986846.35 | 1808260.14 | 7045.34 | CSA |
| 6 | 1986914.19 | 1808333.60 | 7043.45 | CSA |
| 7 | 1986552.49 | 1808531.52 | 7052.49 | CSA |
| 8 | 1986620.34 | 1808604.98 | 7051.66 | CSA |
| 9 | 1988228.35 | 1813493.93 | 7096.75 | CSA |
| 10 | 1988296.73 | 1813566.89 | 7097.40 | CSA |
| 11 | 1988078.35 | 1813772.59 | 7096.53 | CSA |
| 12 | 1988009.97 | 1813699.62 | 7095.78 | CSA |

| Points of Interest | | | | |
|--------------------|-----------------|------------------|-------------------------|------------------------|
| POI # | Latitude | Longitude | Site Elevation (ft msl) | Above Grade Level (ft) |
| 13 | N36° 27' 42.59" | W105° 39' 49.63" | 7090.50 | 15' |
| 14 | N36° 27' 47.72" | W105° 39' 39.68" | 7096.39 | 15' |
| 15 | N36° 27' 50.20" | W105° 39' 41.74" | 7100.50 | 15' |
| 16 | N36° 27' 50.99" | W105° 39' 46.36" | 7098.40 | 15' |
| 17 | N36° 27' 51.90" | W105° 39' 51.58" | 7092.24 | 15' |
| 18 | N36° 27' 45.67" | W105° 40' 02.86" | 7082.94 | 15' |
| 19 | N36° 27' 35.42" | W105° 40' 20.73" | 7066.72 | 15' |
| 20 | N36° 27' 26.64" | W105° 40' 37.68" | 7056.65 | 15' |
| 21 | N36° 27' 32.55" | W105° 40' 43.33" | 7045.72 | 15' |
| 22 | N36° 27' 35.64" | W105° 40' 48.19" | 7046.42 | 15' |
| 23 | N36° 27' 29.78" | W105° 40' 55.97" | 7037.47 | 15' |

LEGEND

PHASE I WORK AREA

CONTRACTOR STAGING AREA

LOW PROFILE BARRIER

CONTRACTOR HAUL ROUTE

ROFA = RUNWAY OBJECT FREE AREA

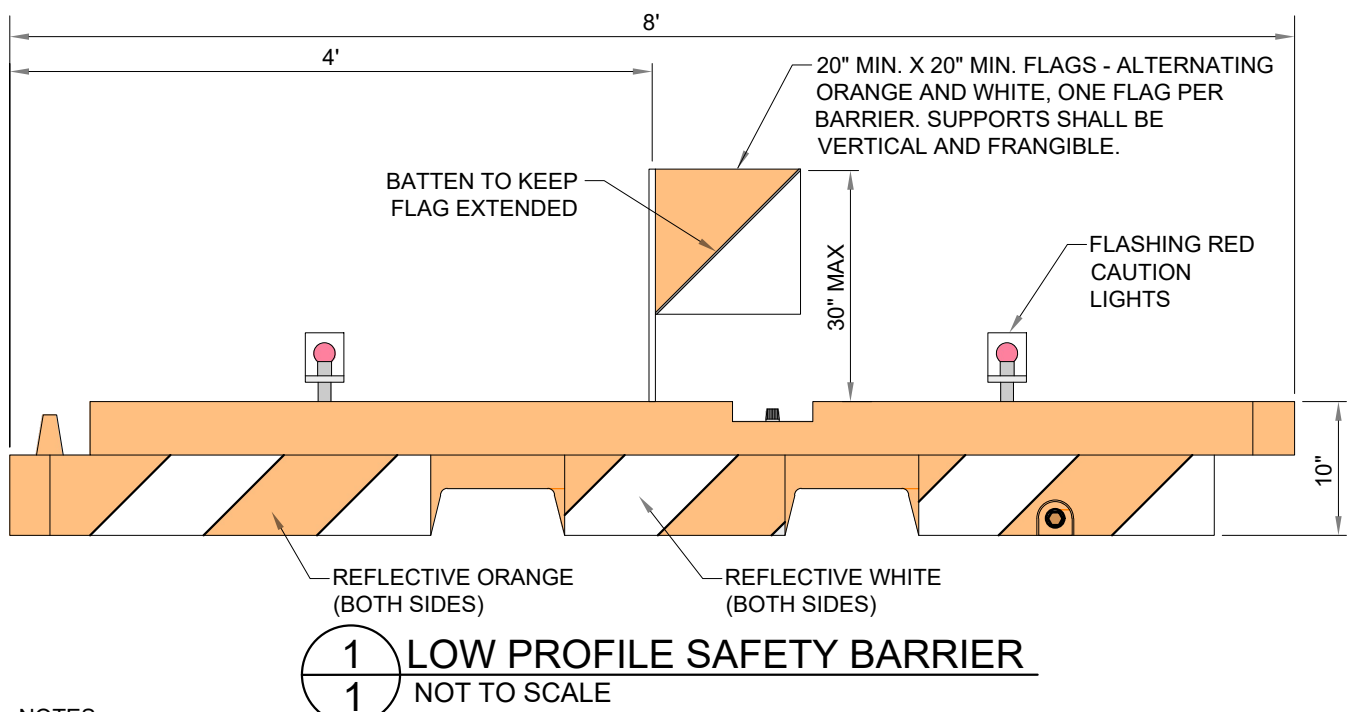
ROFZ = RUNWAY OBSTACLE FREE ZONE

RSA = RUNWAY SAFETY AREA

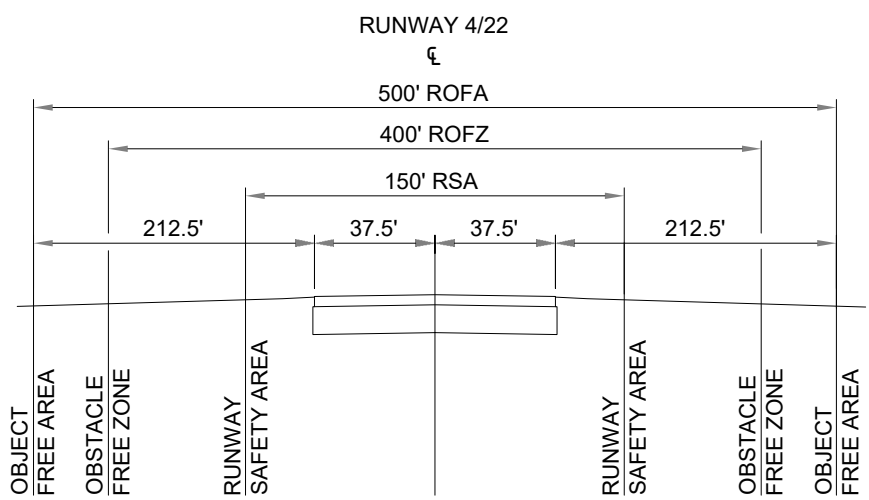
TOFA = TAXIWAY OBJECT FREE AREA

TSA = TAXIWAY SAFETY AREA

LATITUDE AND LONGITUDES (LAT/LONG) DELINEATION OF THE CONSTRUCTION AREA AND CONTRACTOR STAGING AREA LIMITS

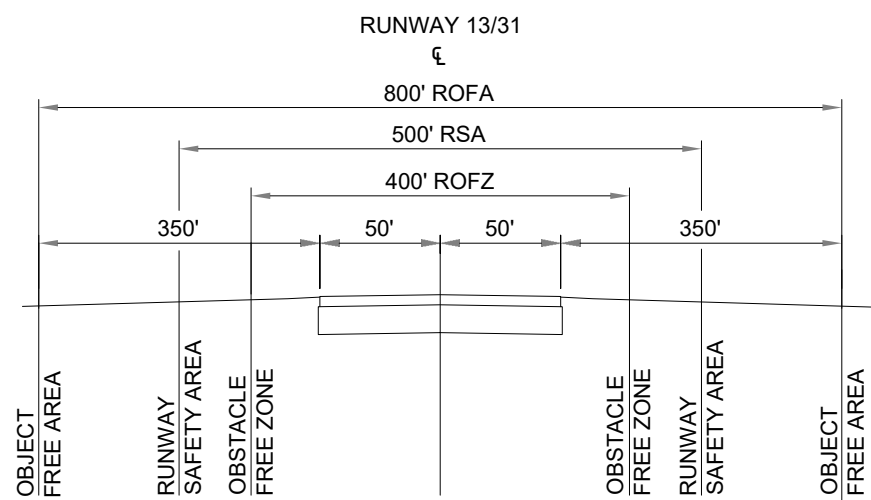


- NOTES:
- BARRIER SHALL BE SHERWIN INDUSTRIES, 10" x 96" LOW PROFILE AIRPORT BARRIER, AS SHOWN, OR APPROVED EQUAL.
 - THE ENTIRE AREA OF ORANGE AND WHITE STRIPES SHALL BE REFLECTORIZED WITH SMOOTH SURFACE TYPE REFLECTIVE SHEETING.
 - LIGHTS MUST BE MOUNTED ON BARRIERS AND SPACED AT NO MORE THAN 10 FT.
 - THE BARRIERS SHALL BE WEIGHTED AGAINST PROPWASH AND CAPABLE OF WITHSTANDING UP TO 100 M.P.H. WIND FORCES.
 - FLASHING RED CAUTION LIGHTS SHALL BE BATTERY OPERATED AND SHALL MAINTAIN SUCH INTENSITY SO AS TO BE READILY IDENTIFIED FROM DISTANCES OF AT LEAST 200 FEET DURING DARKNESS.
 - THE CONTRACTOR SHALL CHECK ALL BARRIERS AND LIGHTS EACH DAY BEFORE LEAVING THE AIRPORT TO ENSURE LIGHTS ARE WORKING PROPERLY AND MAY NOT LEAVE WITHOUT ALL BARRIERS AND LIGHTS BEING IN PROPER WORKING ORDER.



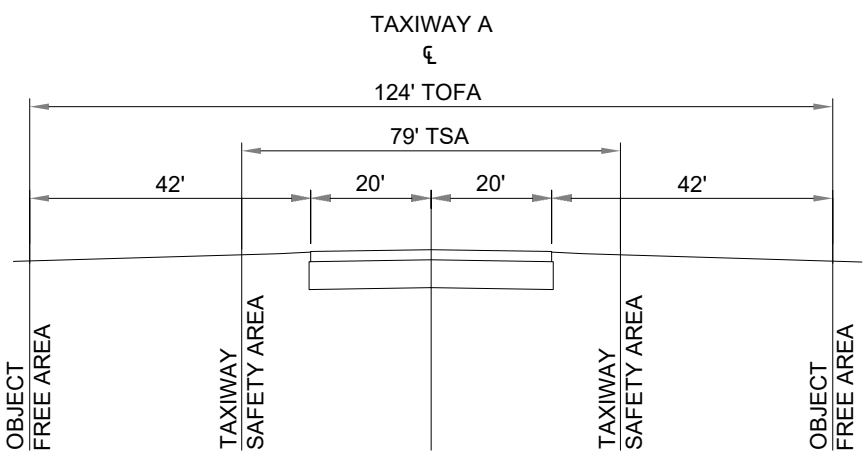
ALL STATIONARY CONSTRUCTION EQUIPMENT AND STOCKPILES MUST REMAIN CLEAR OF ANY OPEN RUNWAY OBJECT FREE AREA. ALL CONSTRUCTION EQUIPMENT AND TRAFFIC MUST REMAIN CLEAR OF ANY OPEN RUNWAY OBSTACLE FREE ZONE.

2 SAFETY AREAS
1 NOT TO SCALE



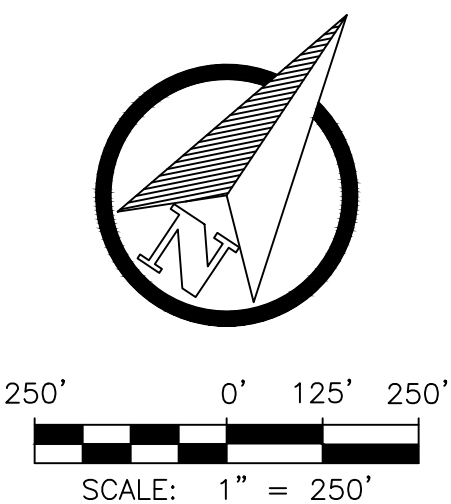
ALL STATIONARY CONSTRUCTION EQUIPMENT AND STOCKPILES MUST REMAIN CLEAR OF ANY OPEN RUNWAY OBJECT FREE AREA. ALL CONSTRUCTION EQUIPMENT AND TRAFFIC MUST REMAIN CLEAR OF ANY OPEN RUNWAY OBSTACLE FREE ZONE.

3 SAFETY AREAS
1 NOT TO SCALE



ALL CONSTRUCTION EQUIPMENT, STOCKPILES, AND TRAFFIC MUST REMAIN CLEAR OF ANY OPEN TAXIWAY OBJECT FREE AREA.

4 SAFETY AREAS
1 NOT TO SCALE



| REV. NO. | DATE | DESCRIPTION | APPROVED BY |
|----------|----------|----------------|-------------|
| 1 | 05/03/25 | ISSUED FOR BID | GP |
| | | | |
| | | | |
| | | | |

DATE OF ISSUE: 05/03/25
DESIGNED BY: ANT
DRAWN BY: RT, ANT
CHECKED BY: GP
APPROVED BY: GP



DBS&A
a Geo-Logic Company
6501 Americas Parkway NE Suite 200
Albuquerque, NM 87110



TOWN OF TAOs
TAOS COUNTY, NEW MEXICO
EDA 08-79-05544

TAOS REGIONAL AIRPORT WATER
AND WASTEWATER UTILITIES
TAOS COUNTY, NM

CONSTRUCTION SAFETY & PHASING PLAN

SHEET 30 OF 34
DWG NO. C-25

JOB NO.
DB21.1270