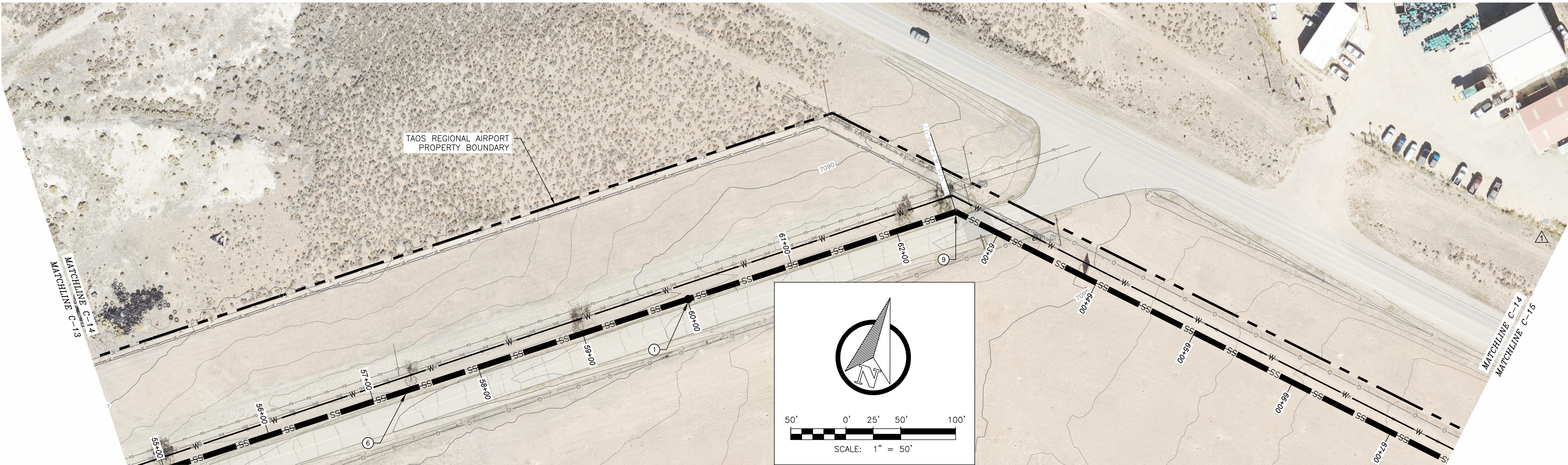
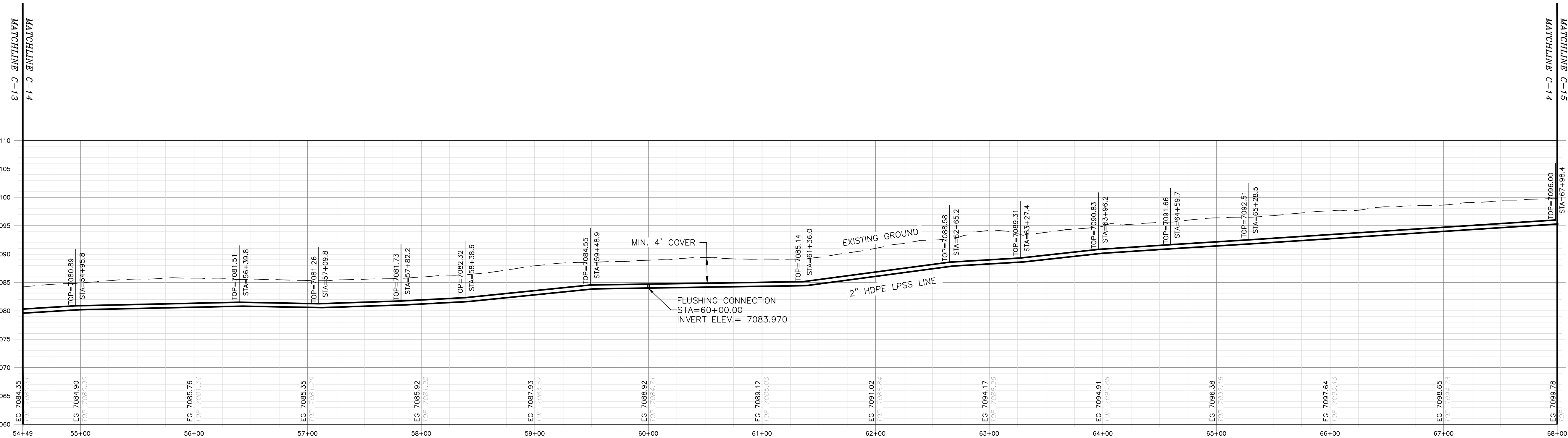


\\DATA\ASB\DATA\PROJECTS\DB21.1270\_Taos\_Airport-ABETA.CONSTRUCTION\CAD\PRODUCTION\ONSITE UTILITIES\C-14 - SEWER P AND P 12.DWG July 1, 2025 - 2:14 PM BY: ISABEL RODRIGUEZ



PLAN



PROFILE

HORIZONTAL SCALE: 1"=50'  
VERTICAL SCALE: 1"=10'

GENERAL NOTES:

1. CLEAR AND GRUB PIPE CORRIDOR (MIN 10' WIDTH) AND GRADE SMOOTH AFTER CONSTRUCTION.
2. MINIMUM PIPE BURIAL SHALL BE 4' TO BOTTOM OF PIPE.
3. EXISTING UTILITIES SHOWN ARE APPROXIMATE. CONTRACTOR TO CONTACT APPROPRIATE UTILITY JURISDICTION AND POTHOLE EXISTING UTILITIES AS REQUIRED TO AVOID CONFLICTS.
4. MAINTAIN 6 FOOT CLEARANCE BETWEEN EXISTING ROAD EDGE OF PAVEMENT AND PIPELINE TRENCH EXCAVATION UNLESS OTHERWISE NOTED.
5. PIPELINE CROSSINGS OF ROADWAYS AND DRIVEWAYS SHALL BE IN ACCORDANCE WITH NM PUBLIC WORKS STANDARDS.

KEY NOTES:

- ① FLUSHING CONNECTIONS TO BE INSTALLED EVERY 1000' PER DETAIL 2, DWG C-24
- ② STAINLESS STEEL LATERAL KIT INSTALLED AT LATERAL JUNCTIONS BETWEEN GRINDER PUMP AND MAIN LINE PER DETAIL 1, DWG C-21
- ③ AIR/VACUUM RELIEF VALVES PER SPECIFICATIONS PLACED AT INTERVALS OF 2000 FEET PER DETAIL 2, DWG C-20
- ④ LATERAL KIT INSTALLED BETWEEN GRINDER PUMP AND MAIN LINE PER DETAIL 1, DWG C-21
- ⑤ 1 1/4" SDR 11 HDPE LPSS LATERAL
- ⑥ 2" SDR 11 HDPE LPSS LINE
- ⑦ 3" SDR 11 HDPE LPSS LINE
- ⑧ 90-DEGREE BEND
- ⑨ 45-DEGREE BEND
- ⑩ 22.5-DEGREE BEND
- ⑪ 11.25-DEGREE BEND
- ⑫ 3" SDR 11 HDPE TEE
- ⑬ BLIND FLANGE
- ⑭ 3" X 2" SDR 11 HDPE REDUCER
- ⑮ 2" SDR 11 HDPE TEE
- ⑯ ISOLATION VALVE
- ⑰ POTENTIAL UTILITY CROSSING
- ⑱ 2" X 1-1/4" SDR 11 HDPE REDUCER
- ⑲ NEW SEWAGE LIFT STATION PER SPECIFICATIONS. COORDINATE LOCATION WITH OTHERS.

REV. NO.	DATE	DESCRIPTION	APPROVED BY
①	05/03/25	ISSUED FOR BID	GP
②	07/02/25	REVISED KEY NOTES	GP

DATE OF ISSUE: 07/02/2025
DESIGNED BY: ANT
DRAWN BY: RT, ANT
CHECKED BY: GP
APPROVED BY: GP



TOWN OF TAOS  
TAOS COUNTY, NEW MEXICO  
EDA 08-79-05544

TAOS REGIONAL AIRPORT WATER  
AND WASTEWATER UTILITIES  
TAOS COUNTY, NM

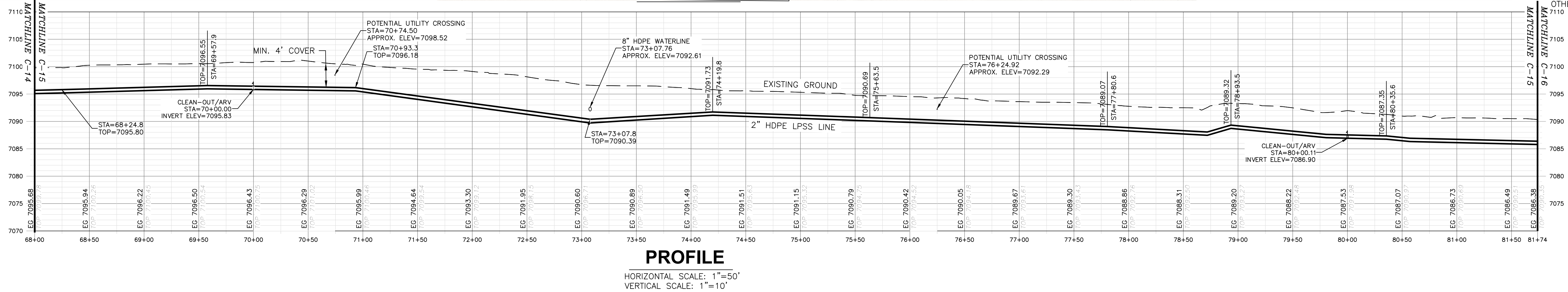
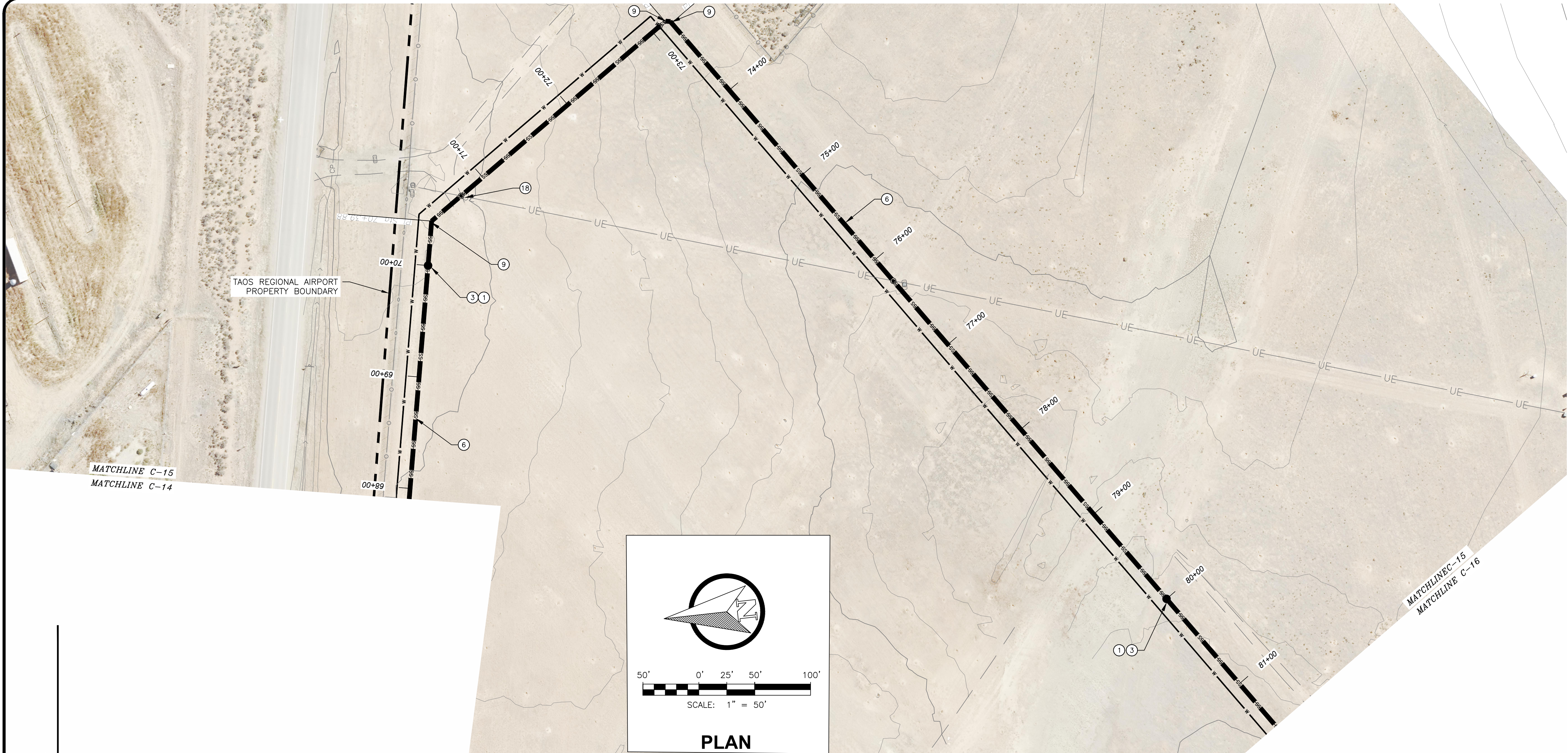
PLAN AND PROFILE 12 - SEWER

SHEET 18 OF 34  
DWG NO. C-14

JOB NO.  
DB21.1270



\\DATA\ASB\DATA\PROJECTS\DB21.1270\_TAOS\_AIRPORT-ABETTA\_CONSTRUCTION\CAD\PRODUCTION\ON SITE UTILITIES\C-15 - SEWER P AND P 13.DWG July 1, 2025 - 2:14 PM BY: ISABEL RODRIGUEZ



GENERAL NOTES:

1. CLEAR AND GRUB PIPE CORRIDOR (MIN 10' WIDTH) AND GRADE SMOOTH AFTER CONSTRUCTION.
2. MINIMUM PIPE BURIAL SHALL BE 4' TO BOTTOM OF PIPE.
3. EXISTING UTILITIES SHOWN ARE APPROXIMATE. CONTRACTOR TO CONTACT APPROPRIATE UTILITY JURISDICTION AND POTHOLE EXISTING UTILITIES AS REQUIRED TO AVOID CONFLICTS.
4. MAINTAIN 6 FOOT CLEARANCE BETWEEN EXISTING ROAD EDGE OF PAVEMENT AND PIPELINE TRENCH EXCAVATION UNLESS OTHERWISE NOTED.
5. PIPELINE CROSSINGS OF ROADWAYS AND DRIVEWAYS SHALL BE IN ACCORDANCE WITH NM PUBLIC WORKS STANDARDS.

KEY NOTES:

- ① FLUSHING CONNECTIONS TO BE INSTALLED EVERY 1000' PER DETAIL 2, DWG C-24
- ② STAINLESS STEEL LATERAL KIT INSTALLED AT LATERAL JUNCTIONS BETWEEN GRINDER PUMP AND MAIN LINE PER DETAIL 1, DWG C-21
- ③ AIR/VACUUM RELIEF VALVES PER SPECIFICATIONS PLACED AT INTERVALS OF 2000 FEET PER DETAIL 2, DWG C-20
- ④ LATERAL KIT INSTALLED BETWEEN GRINDER PUMP AND MAIN LINE PER DETAIL 1, DWG C-21
- ⑤ 1 1/4" SDR 11 HDPE LPSS LATERAL
- ⑥ 2" SDR 11 HDPE LPSS LINE
- ⑦ 3" SDR 11 HDPE LPSS LINE
- ⑧ 90-DEGREE BEND
- ⑨ 45-DEGREE BEND
- ⑩ 22.5-DEGREE BEND
- ⑪ 11.25-DEGREE BEND
- ⑫ 3" SDR 11 HDPE TEE
- ⑬ BLIND FLANGE
- ⑭ 3" X 2" SDR 11 HDPE REDUCER
- ⑮ 2" SDR 11 HDPE TEE
- ⑯ ISOLATION VALVE
- ⑰ POTENTIAL UTILITY CROSSING
- ⑱ 2" X 1-1/4" SDR 11 HDPE REDUCER
- ⑲ NEW SEWAGE LIFT STATION PER SPECIFICATIONS. COORDINATE LOCATION WITH OTHERS.

REV. NO.	DATE	DESCRIPTION	APPROVED BY
①	05/03/25	ISSUED FOR BID	GP
②	07/02/25	REVISED KEY NOTES	GP

DATE OF ISSUE: 07/02/2025

DESIGNED BY: ANT

DRAWN BY: RT, ANT

CHECKED BY: GP

APPROVED BY: GP

 **DBS&A**  
a Geo-Logic Company  
6501 Americas Parkway NE Suite 200  
Albuquerque, NM 87110



TOWN OF TAOS  
TAOS COUNTY, NEW MEXICO  
EDA 08-79-05544

TAOS REGIONAL AIRPORT WATER  
AND WASTEWATER UTILITIES  
TAOS COUNTY, NM

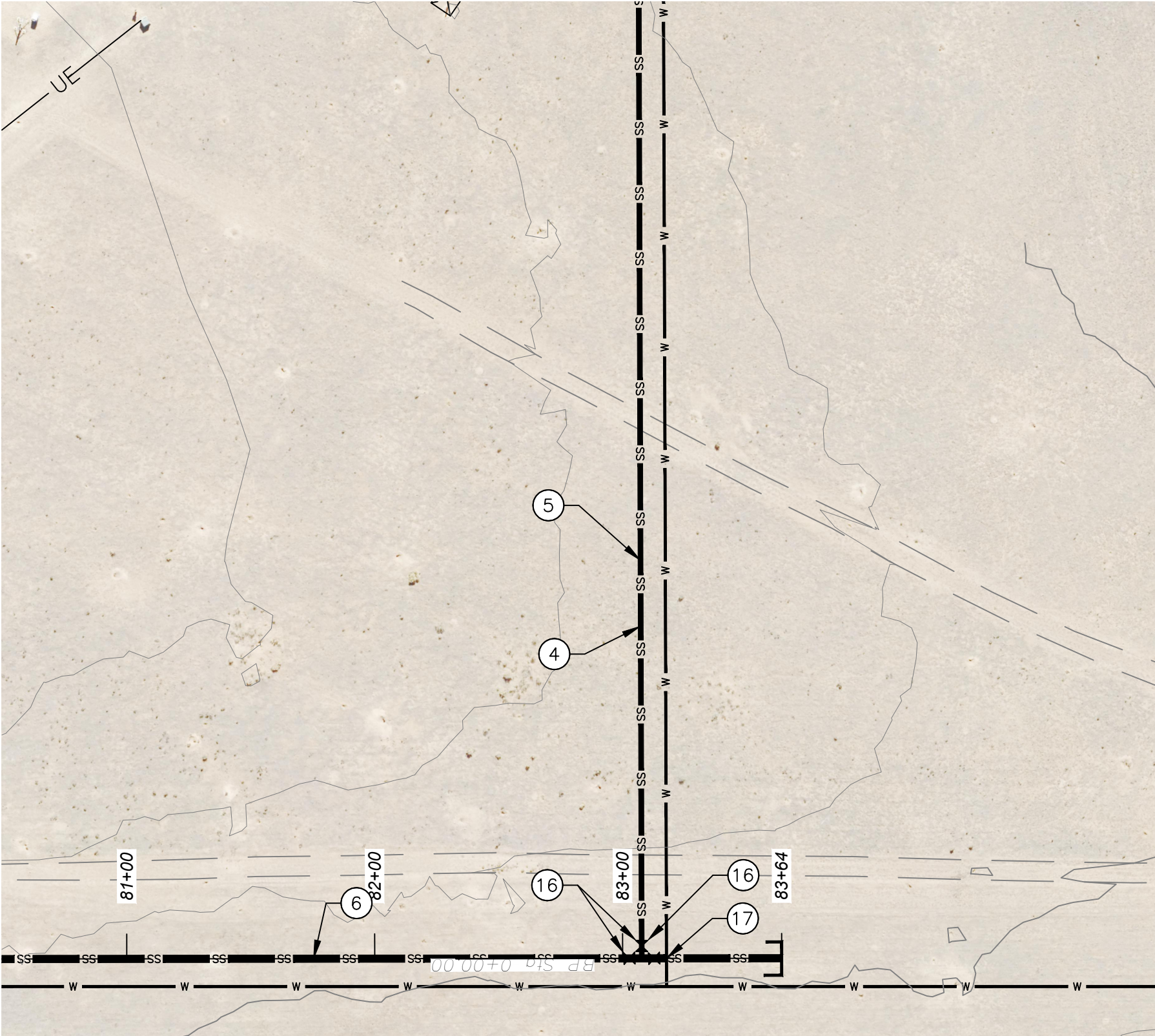
PLAN AND PROFILE 13 - SEWER

SHEET 19 OF 34  
DWG NO. C-15

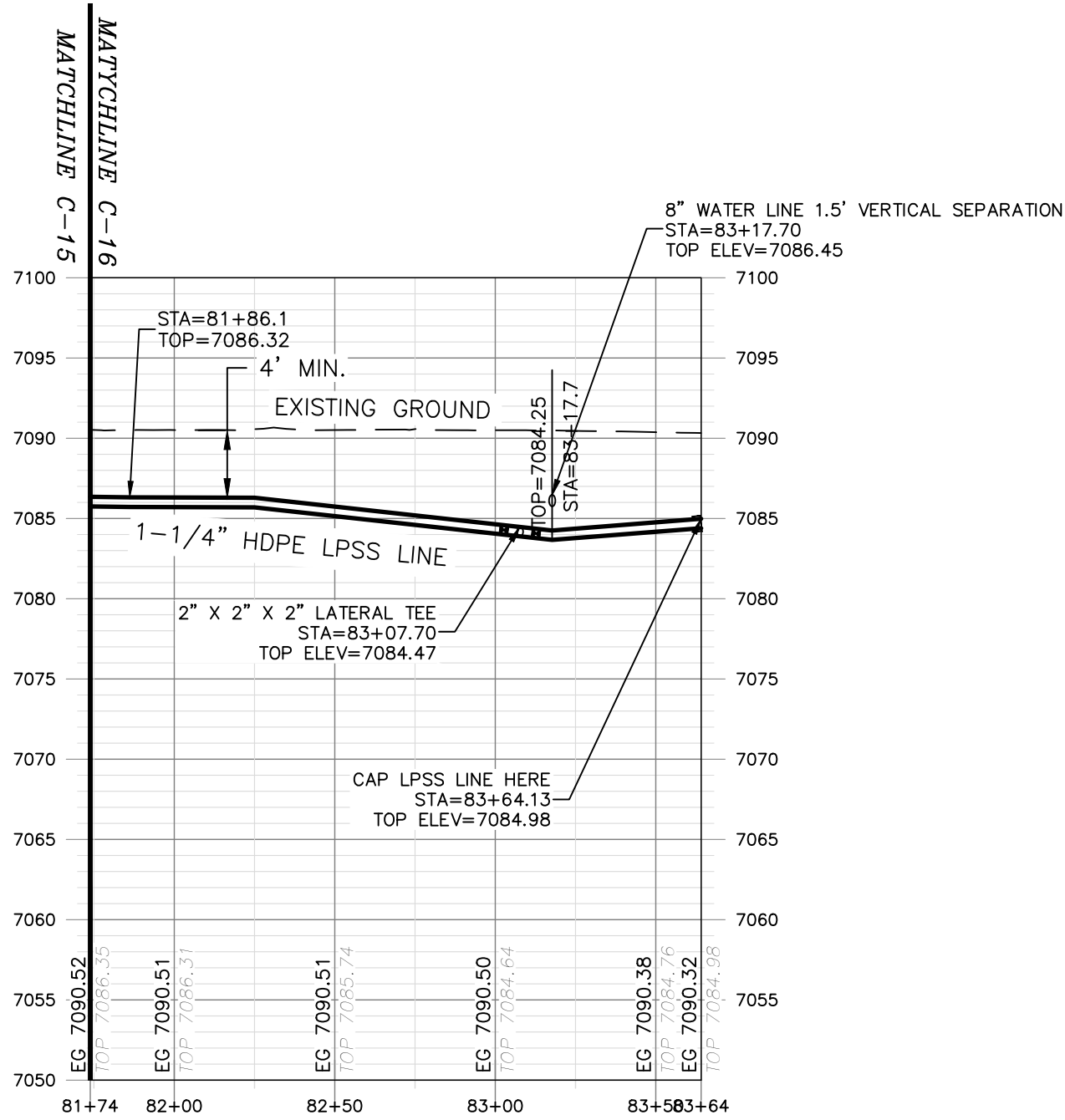
JOB NO.  
DB21.1270



\\DATA\ASB\DATA\PROJECTS\DB21.1270\_Taos\_Airport-ABETA\_CONSTRUCTION\CAD\PRODUCTION\ON SITE UTILITIES\C-16 - SEWER P AND P 14.DWG July 1, 2025 - 2:14 PM BY: ISABEL RODRIGUEZ



PLAN



PROFILE

HORIZONTAL SCALE: 1"=50'  
VERTICAL SCALE: 1"=5'

GENERAL NOTES:

- CLEAR AND GRUB PIPE CORRIDOR (MIN 10' WIDTH) AND GRADE SMOOTH AFTER CONSTRUCTION.
- MINIMUM PIPE BURIAL SHALL BE 4' TO BOTTOM OF PIPE.
- EXISTING UTILITIES SHOWN ARE APPROXIMATE. CONTRACTOR TO CONTACT APPROPRIATE UTILITY JURISDICTION AND POTHOLE EXISTING UTILITIES AS REQUIRED TO AVOID CONFLICTS.
- MAINTAIN 6 FOOT CLEARANCE BETWEEN EXISTING ROAD EDGE OF PAVEMENT AND PIPELINE TRENCH EXCAVATION UNLESS OTHERWISE NOTED.
- PIPELINE CROSSINGS OF ROADWAYS AND DRIVEWAYS SHALL BE IN ACCORDANCE WITH NM PUBLIC WORKS STANDARDS.

KEY NOTES:

- FLUSHING CONNECTIONS TO BE INSTALLED EVERY 1000' PER DETAIL 2, DWG C-24
- STAINLESS STEEL LATERAL KIT INSTALLED AT LATERAL JUNCTIONS BETWEEN GRINDER PUMP AND MAIN LINE PER DETAIL 1, DWG C-21
- AIR/VACUUM RELIEF VALVES PER SPECIFICATIONS PLACED AT INTERVALS OF 2000 FEET PER DETAIL 2, DWG C-20
- LATERAL KIT INSTALLED BETWEEN GRINDER PUMP AND MAIN LINE PER DETAIL 1, DWG C-21
- 1 1/4" SDR 11 HDPE LPSS LATERAL
- 2" SDR 11 HDPE LPSS LINE
- 3" SDR 11 HDPE LPSS LINE
- 90-DEGREE BEND
- 45-DEGREE BEND
- 22.5-DEGREE BEND
- 11.25-DEGREE BEND
- 3" SDR 11 HDPE TEE
- BLIND FLANGE
- 3" X 2" SDR 11 HDPE REDUCER
- 2" SDR 11 HDPE TEE
- ISOLATION VALVE
- POTENTIAL UTILITY CROSSING
- 2" X 1-1/4" SDR 11 HDPE REDUCER
- NEW SEWAGE LIFT STATION PER SPECIFICATIONS. COORDINATE LOCATION WITH OTHERS.

REV. NO.	DATE	DESCRIPTION	APPROVED BY
1	05/03/25	ISSUED FOR BID	GP
2	07/02/25	REVISED KEY NOTES	GP

DATE OF ISSUE: 07/02/2025
DESIGNED BY: ANT
DRAWN BY: RT, ANT
CHECKED BY: GP
APPROVED BY: GP



TOWN OF TAOS  
TAOS COUNTY, NEW MEXICO  
EDA 08-79-05544

TAOS REGIONAL AIRPORT WATER  
AND WASTEWATER UTILITIES  
TAOS COUNTY, NM

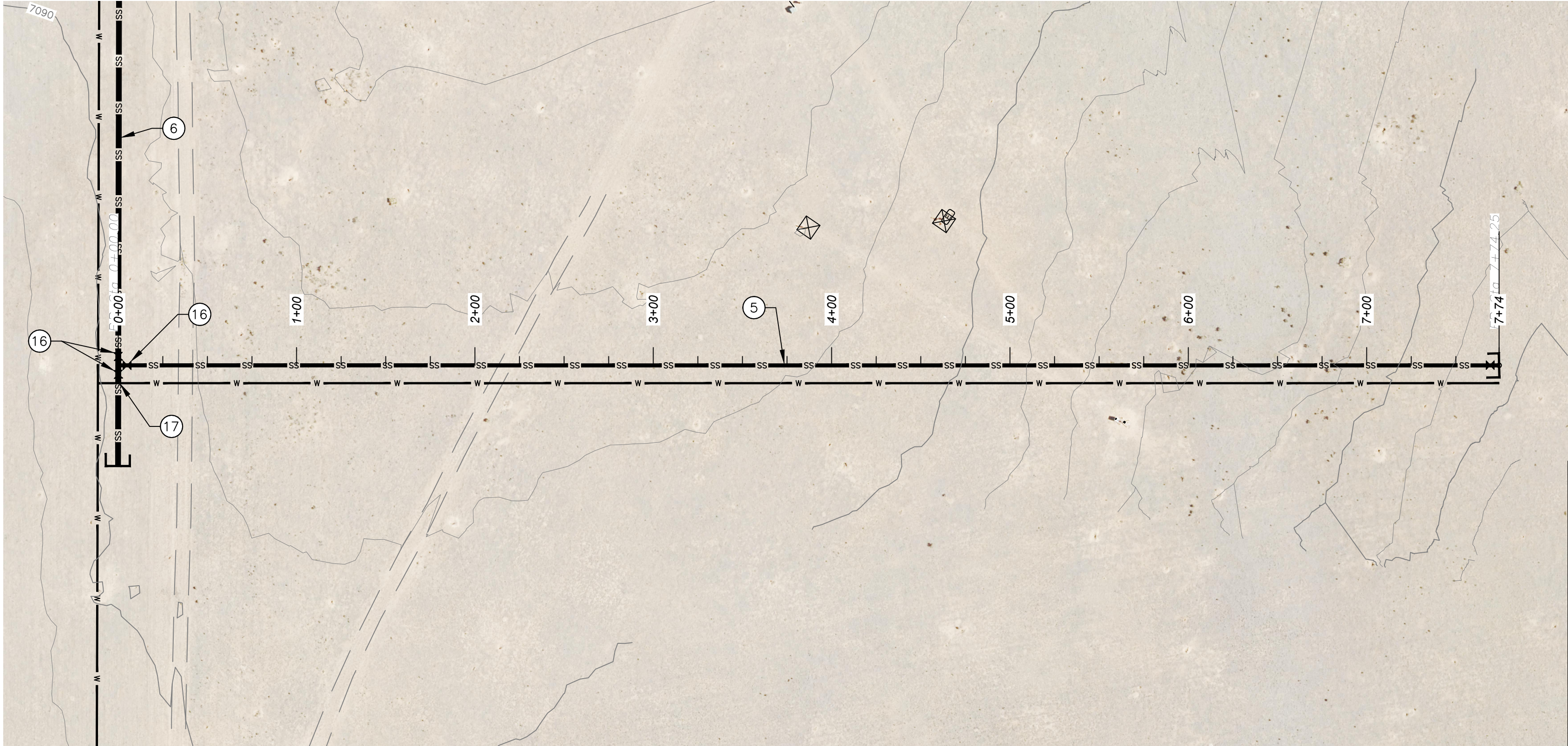
PLAN AND PROFILE 14 - SEWER

SHEET 20 OF 34  
DWG NO. C-16

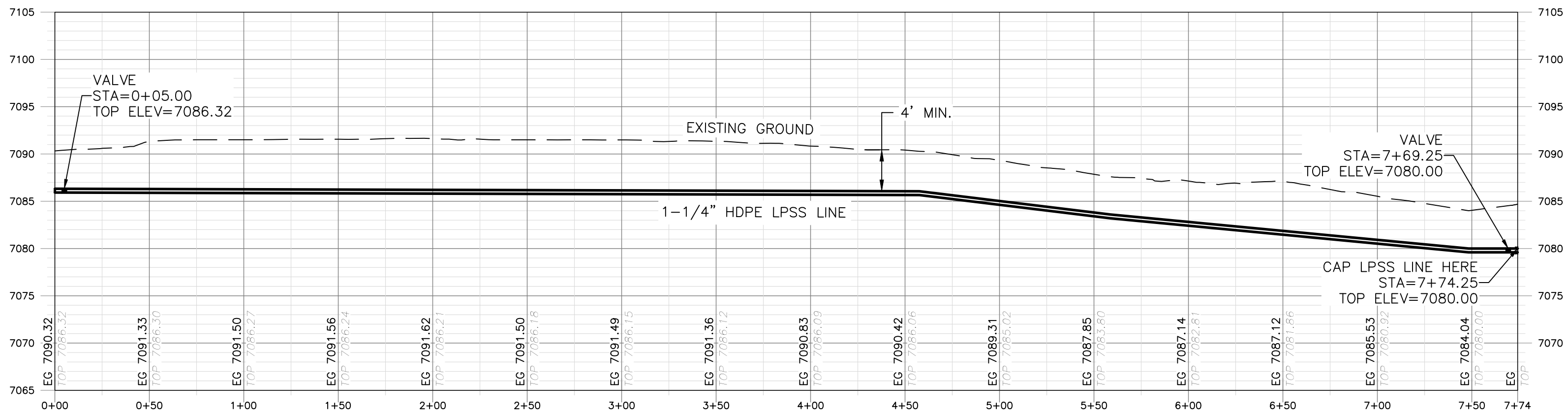
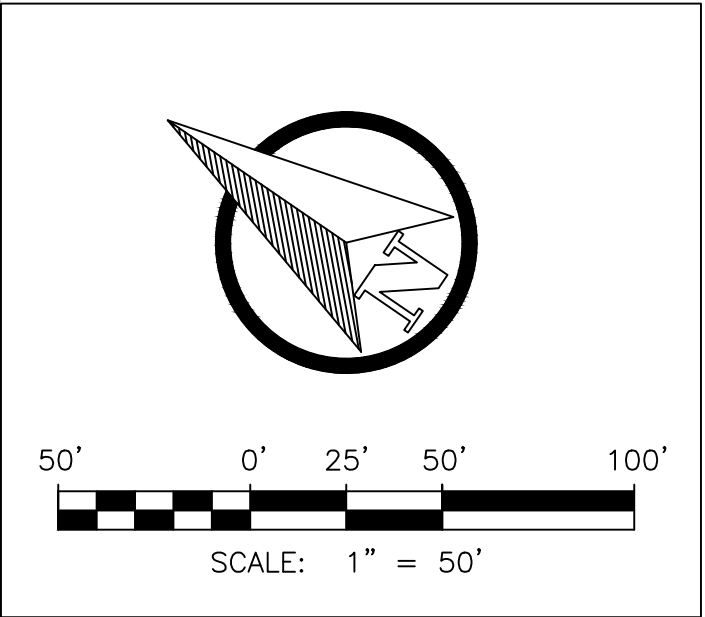
JOB NO.  
DB21.1270



\\DATA\ASB\DATA\PROJECTS\DB21.1270\_TAOs\_AIRPORT-ABETTA\_CONSTRUCTION\CAD\PRODUCTION\ON SITE UTILITIES\C-16A - SEWER P AND P 15.DWG July 1, 2025 - 2:14 PM BY: ISABEL RODRIGUEZ



PLAN



PROFILE

HORIZONTAL SCALE: 1"=50'  
VERTICAL SCALE: 1"=5'

GENERAL NOTES:

1. CLEAR AND GRUB PIPE CORRIDOR (MIN 10' WIDTH) AND GRADE SMOOTH AFTER CONSTRUCTION.
2. MINIMUM PIPE BURIAL SHALL BE 4' TO BOTTOM OF PIPE.
3. EXISTING UTILITIES SHOWN ARE APPROXIMATE. CONTRACTOR TO CONTACT APPROPRIATE UTILITY JURISDICTION AND POTHOLE EXISTING UTILITIES AS REQUIRED TO AVOID CONFLICTS.
4. MAINTAIN 6 FOOT CLEARANCE BETWEEN EXISTING ROAD EDGE OF PAVEMENT AND PIPELINE TRENCH EXCAVATION UNLESS OTHERWISE NOTED.
5. PIPELINE CROSSINGS OF ROADWAYS AND DRIVEWAYS SHALL BE IN ACCORDANCE WITH NM PUBLIC WORKS STANDARDS.

KEY NOTES:

- ① FLUSHING CONNECTIONS TO BE INSTALLED EVERY 1000' PER DETAIL 2, DWG C-24
- ② STAINLESS STEEL LATERAL KIT INSTALLED AT LATERAL JUNCTIONS BETWEEN GRINDER PUMP AND MAIN LINE PER DETAIL 1, DWG C-21
- ③ AIR/VACUUM RELIEF VALVES PER SPECIFICATIONS PLACED AT INTERVALS OF 2000 FEET PER DETAIL 2, DWG C-20
- ④ LATERAL KIT INSTALLED BETWEEN GRINDER PUMP AND MAIN LINE PER DETAIL 1, DWG C-21
- ⑤ 1 1/4" SDR 11 HDPE LPSS LATERAL
- ⑥ 2" SDR 11 HDPE LPSS LINE
- ⑦ 3" SDR 11 HDPE LPSS LINE
- ⑧ 90-DEGREE BEND
- ⑨ 45-DEGREE BEND
- ⑩ 22.5-DEGREE BEND
- ⑪ 11.25-DEGREE BEND
- ⑫ 3" SDR 11 HDPE TEE
- ⑬ BLIND FLANGE
- ⑭ 3" X 2" SDR 11 HDPE REDUCER
- ⑮ 2" SDR 11 HDPE TEE
- ⑯ ISOLATION VALVE
- ⑰ POTENTIAL UTILITY CROSSING
- ⑱ 2" X 1-1/4" SDR 11 HDPE REDUCER
- ⑲ NEW SEWAGE LIFT STATION PER SPECIFICATIONS. COORDINATE LOCATION WITH OTHERS.

REV. NO.	DATE	DESCRIPTION	APPROVED BY
△	05/03/25	ISSUED FOR BID	GP
△	07/02/25	SHEET ADDED	GP

DATE OF ISSUE: 07/02/2025
DESIGNED BY: ANT
DRAWN BY: RT, ANT
CHECKED BY: GP
APPROVED BY: GP



TOWN OF TAOs  
TAOS COUNTY, NEW MEXICO  
EDA 08-79-05544

TAOS REGIONAL AIRPORT WATER  
AND WASTEWATER UTILITIES  
TAOS COUNTY, NM

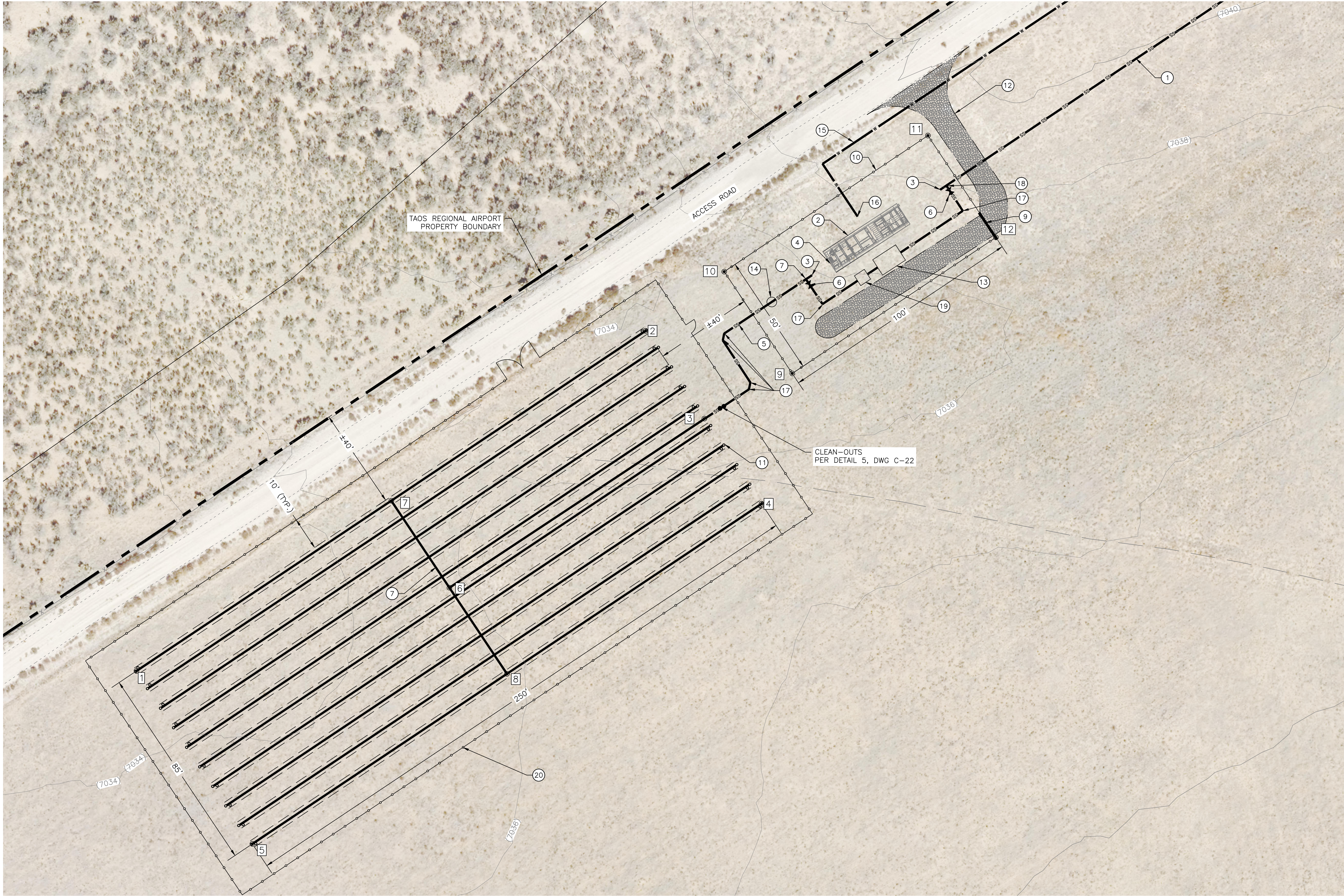
PLAN AND PROFILE 15 - SEWER

SHEET 21 OF 34  
DWG NO. C-16A

JOB NO.  
DB21.1270



\\DATA\ARQ\DATA\PROJECTS\DB21.1270\_TAO\TAOS\_AIRPORT-ABEYTA\_CONSTRUCTION\CAD\PRODUCTION\ON SITE UTILITIES\G-17\_LEACHFIELD SITE PLANDWG July 1, 2025 - 2:14 PM BY: ISABEL RODRIGUEZ



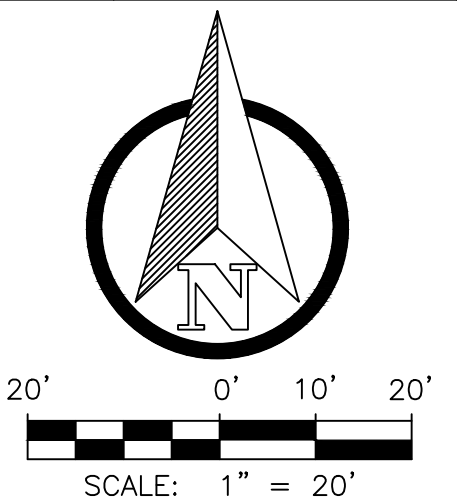
GENERAL NOTES:

1. MINIMUM BURIAL SHALL BE 3' TO TOP OF PIPE

KEY NOTES:

- ① 3" SDR 11 HDPE LPSS LINE  
② 10,000 GPD EXTENDED AERATION WWTP PER DETAIL 1, DWG C-24. FUTURE (BY OTHERS)  
③ STUB OUT 5 FT. MIN AND CAP FOR FUTURE CONNECTION TO WWTP  
④ 6" BLIND FLANGE OUTLET PIPE CONNECTION REDUCED AND CONNECT TO EFFLUENT PIPE  
⑤ 2" PVC EFFLUENT PIPE TO LEACH FIELD  
⑥ GATE VALVE  
⑦ 2" PVC TEE  
⑧ 1-1/4" PVC PERF. DISTRIBUTION PIPE WITH 1/8" ORIFICES.  
⑨ VEHICLE GATE AS PER DETAILS 1 AND 2, DWG C-19  
⑩ 8' HIGH SECURITY FENCE PER DETAILS 1 AND 2, DWG. C-19  
⑪ LEACH FIELD AS PER DETAIL 1, DWG C-22  
⑫ GRADE AND COMPACT ROAD AND PROVIDE 3" AGGREGATE BASE COURSE, 16' WIDE  
⑬ SEPTIC TANK, PER DETAIL 3 AND 4, DWG. C-23  
⑭ FLOW METER IN VAULT PER DETAIL 5, DRAWING C-23  
⑮ 1" HDPE WATER LINE  
⑯ YARD HYDRANT PER DETAIL 3, DWG C-19  
⑰ 45 DEG ELBOW  
⑱ 3" HDPE TEE  
⑲ EFFLUENT PUMPING STATION PER DETAILS 1, 2, DWG C-23  
⑳ FENCE, 4' MAN GATE AND 18' VEHICLE GATE PER DETAIL 2, DWG-18

Point Table			
Point #	Northing	Easting	Description
①	1986758.21	1807319.32	LEACH FIELD
②	1986898.33	1807526.37	LEACH FIELD
③	1986862.64	1807550.55	2" SCH 40 PVC
④	1986828.01	1807574.12	LEACH FIELD
⑤	1986687.90	1807367.08	2" SCH 40 PVC
⑥	1986792.98	1807446.90	2" SCH 40 PVC TEE
⑦	1986828.35	1807422.96	2" SCH 40 PVC
⑧	1986757.96	1807470.60	LEACH FIELD
⑨	1986867.41	1807583.67	FENCE CORNER
⑩	1986908.82	1807555.65	FENCE CORNER
⑪	1986964.86	1807638.47	FENCE CORNER
⑫	1986923.45	1807666.49	FENCE CORNER



REV. NO.	DATE	DESCRIPTION	APPROVED BY
①	05/03/25	ISSUED FOR BID	GP
②	07/02/25	REVISED KEY NOTES	GP

DATE OF ISSUE:	07/02/2025
DESIGNED BY:	ANT
DRAWN BY:	RT, ANT
CHECKED BY:	GP
APPROVED BY:	GP



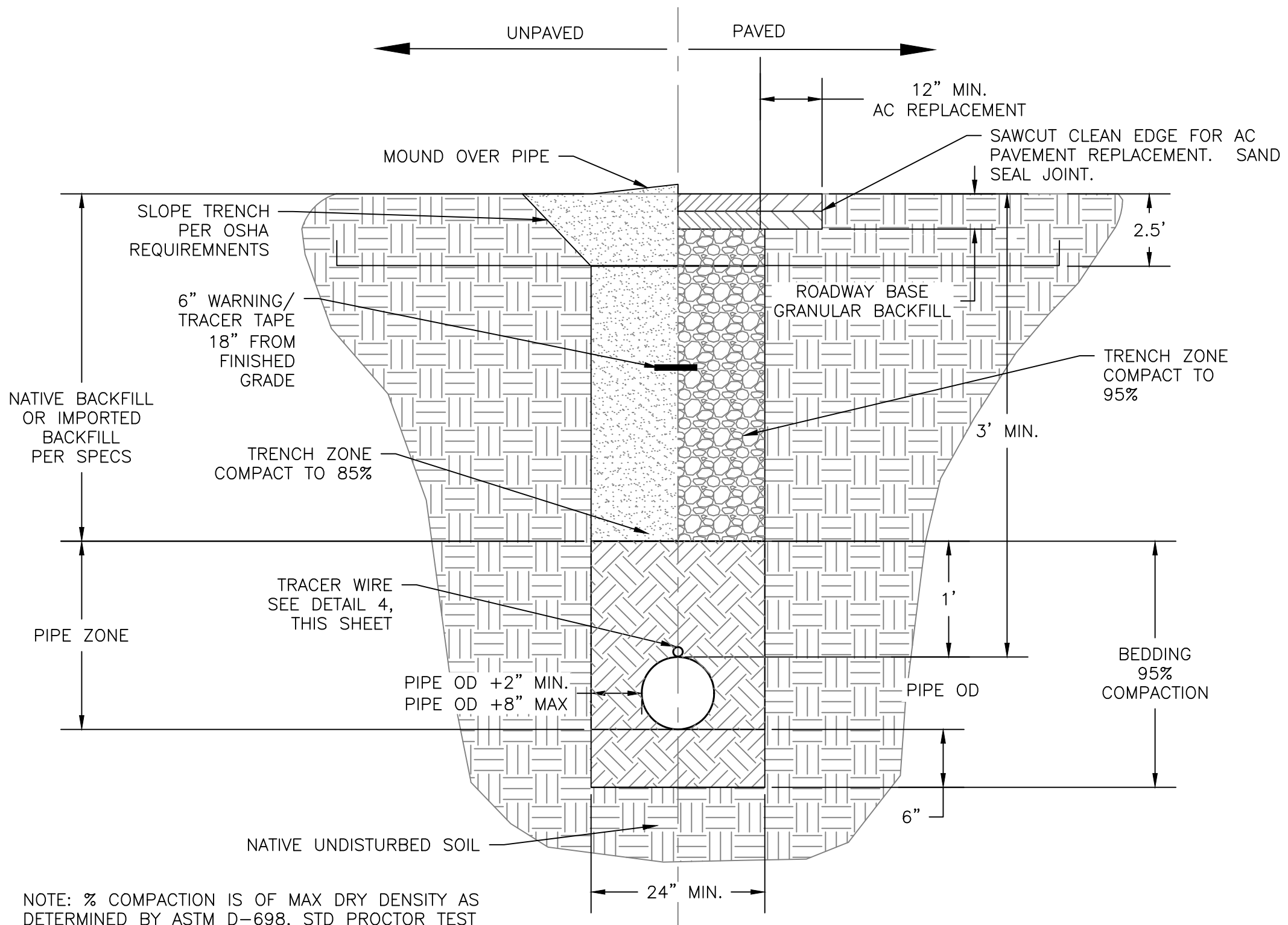
TOWN OF TAO  
TAOS COUNTY, NEW MEXICO  
EDA 08-79-05544

TAOS REGIONAL AIRPORT WATER  
AND WASTEWATER UTILITIES  
TAOS COUNTY, NM  
WWTP & LEACH FIELD SITE PLAN

SHEET22 OF 34  
DWG NO. C-17

JOB NO.  
DB21.1270

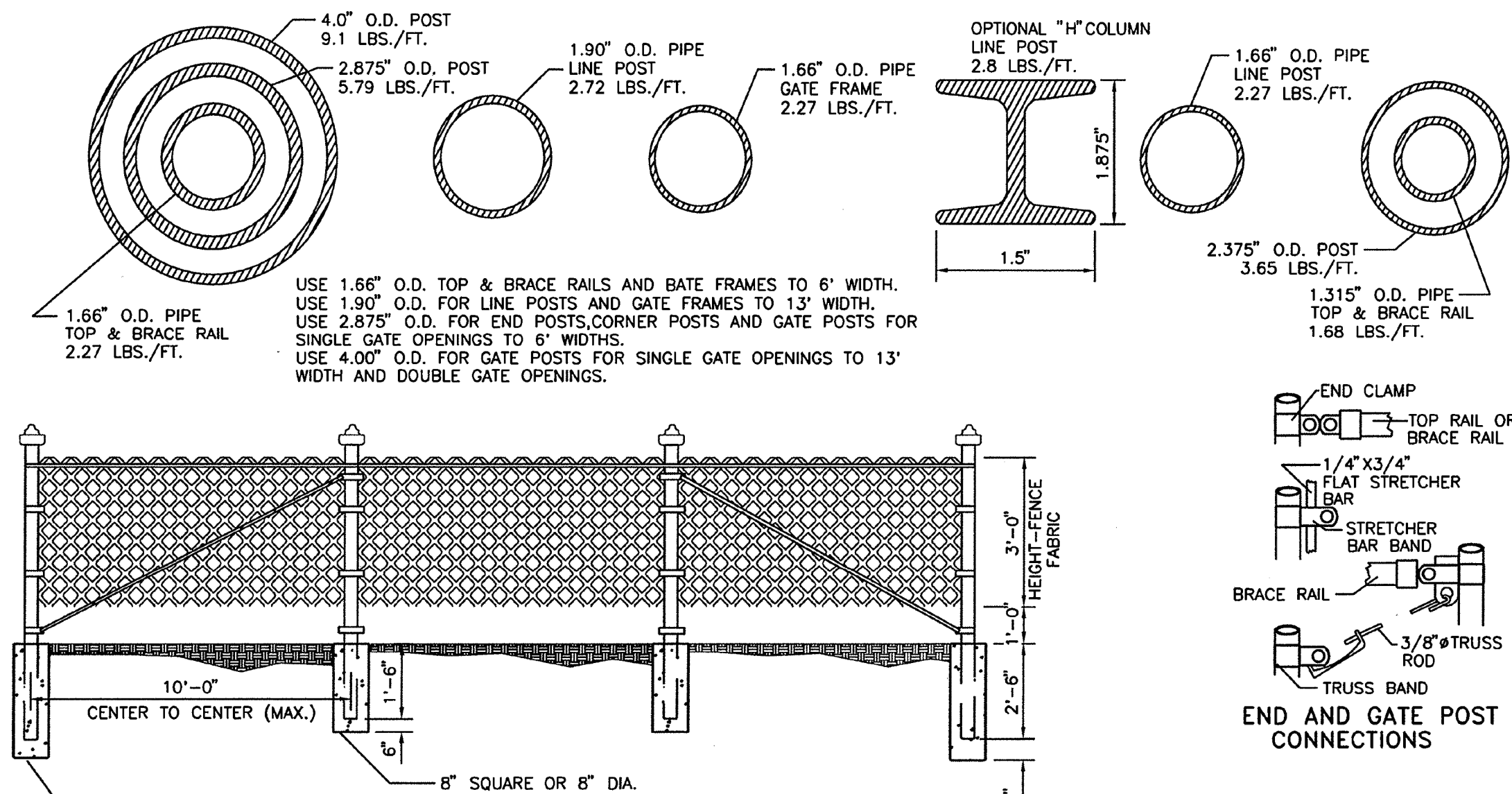




NOTE: % COMPACTION IS OF MAX DRY DENSITY AS DETERMINED BY ASTM D-698, STD PROCTOR TEST

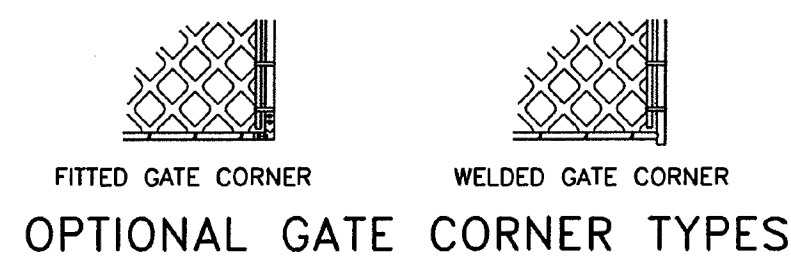
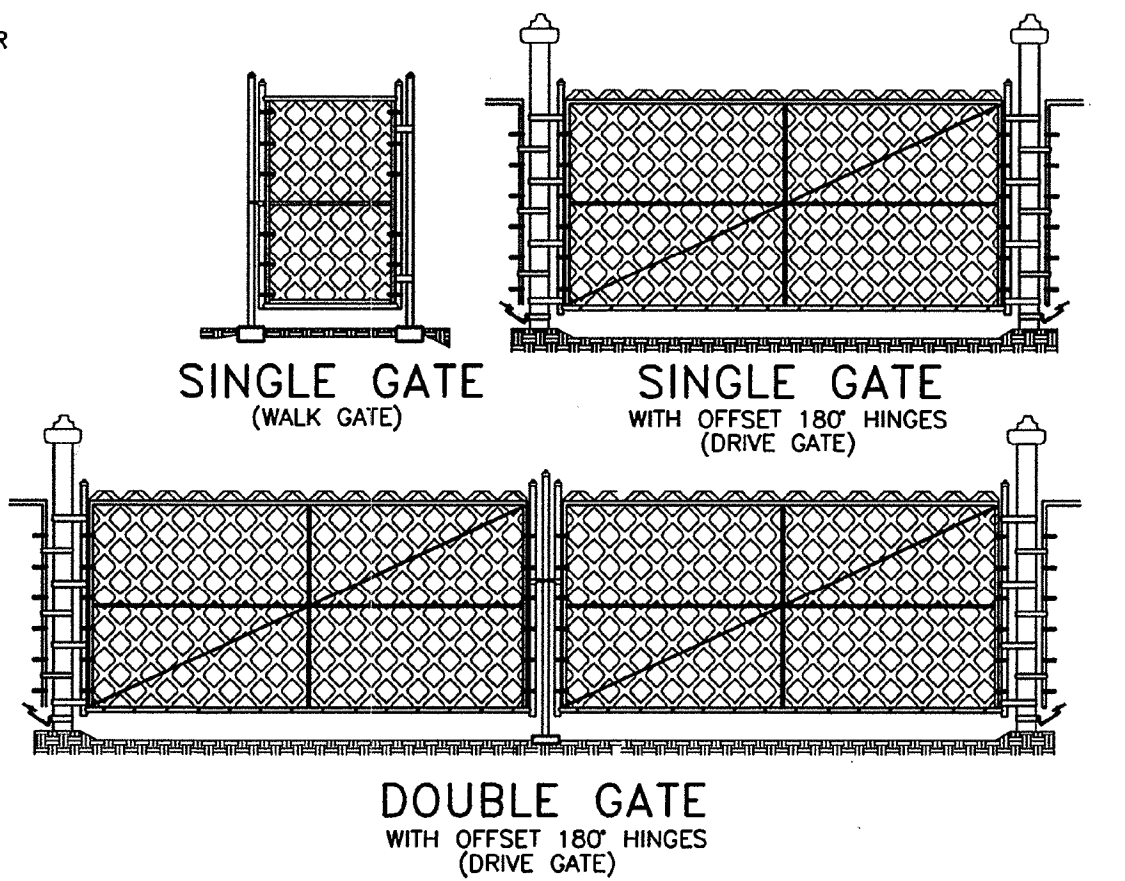
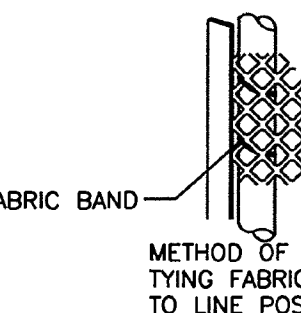
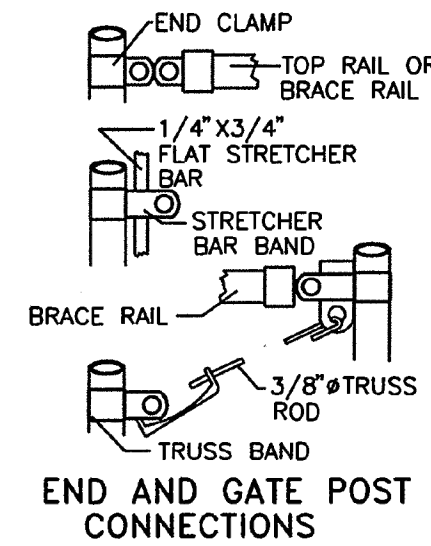
SINGLE PIPE TRENCH DETAILS

SCALE: NTS

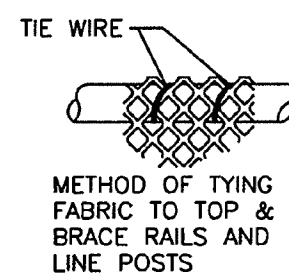


CHAIN LINK 4' ACCESS CONTROL FENCE

TOP RAIL USE 1.315\"/>



OPTIONAL GATE CORNER TYPES



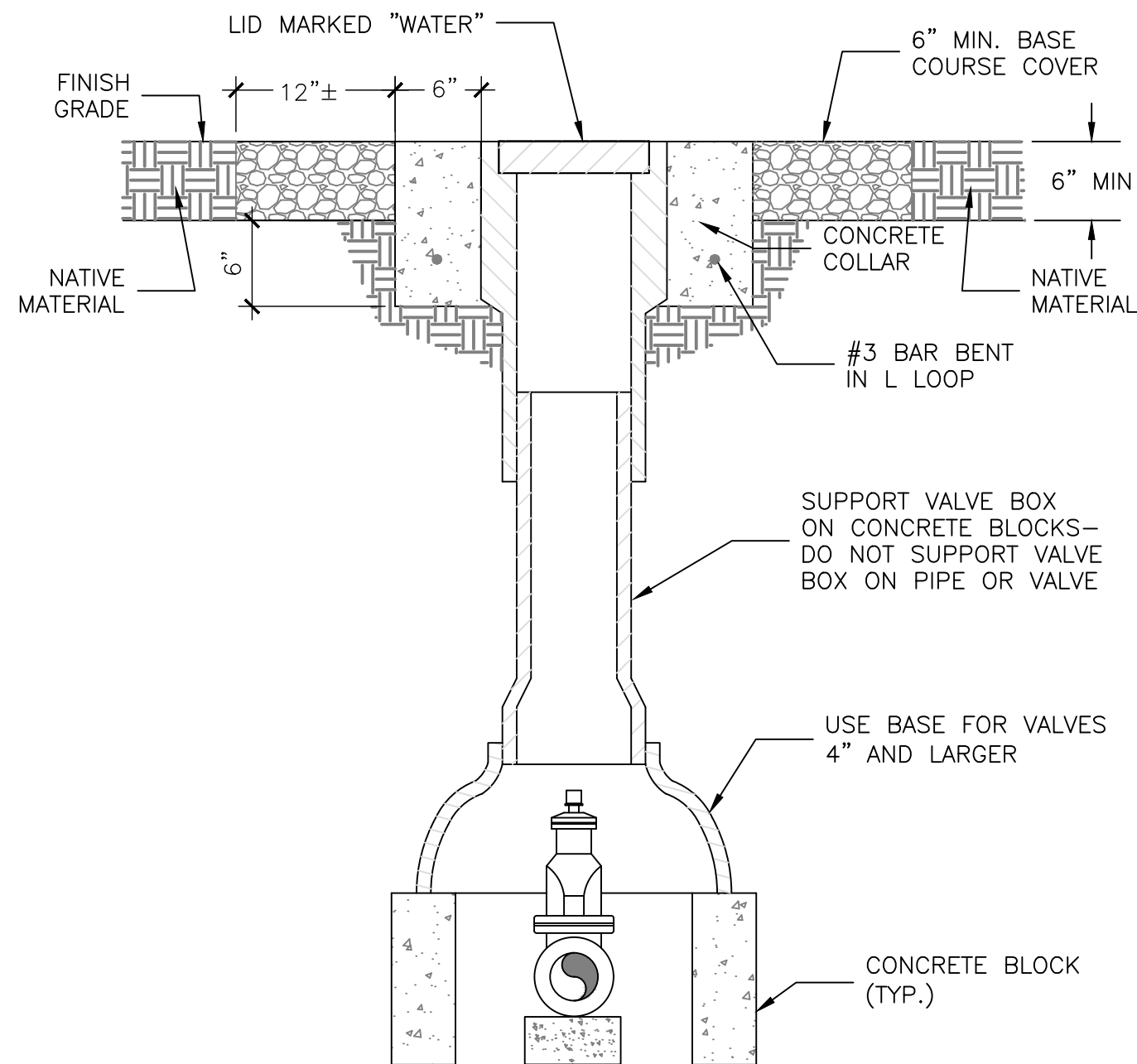
GENERAL NOTES

1. TUBULAR POSTS, BRACES AND TOP RAILS SHALL CONFORM TO THE REQUIREMENTS OF ASTM DESIGNATION F 1083.
2. CHAIN LINK FABRIC SHALL CONFORM TO AASHTO DESIGNATION M-181.
3. ALL CONCRETE TO BE CLASS "A".
4. KNUCKLED SALVAGE SHALL BE USED.
5. DIAMETER (O.D.) SHOWN HEREON ARE NOMINAL SIZES AS ESTABLISHED BY THE AMERICAN STANDARDS ASSOCIATION.

NO.	DATE	REV. BY	DESCRIPTION
REVISIONS (OR CHANGE NOTICES)			
NEW MEXICO			
DEPARTMENT OF TRANSPORTATION			
STANDARD DRAWING			
STANDARD CHAIN LINK			
FENCES AND GATES			
APPROVED	DESIGN ENGINEER	DATE	
DESIGNED BY	DRAWN BY	CHECKED BY	

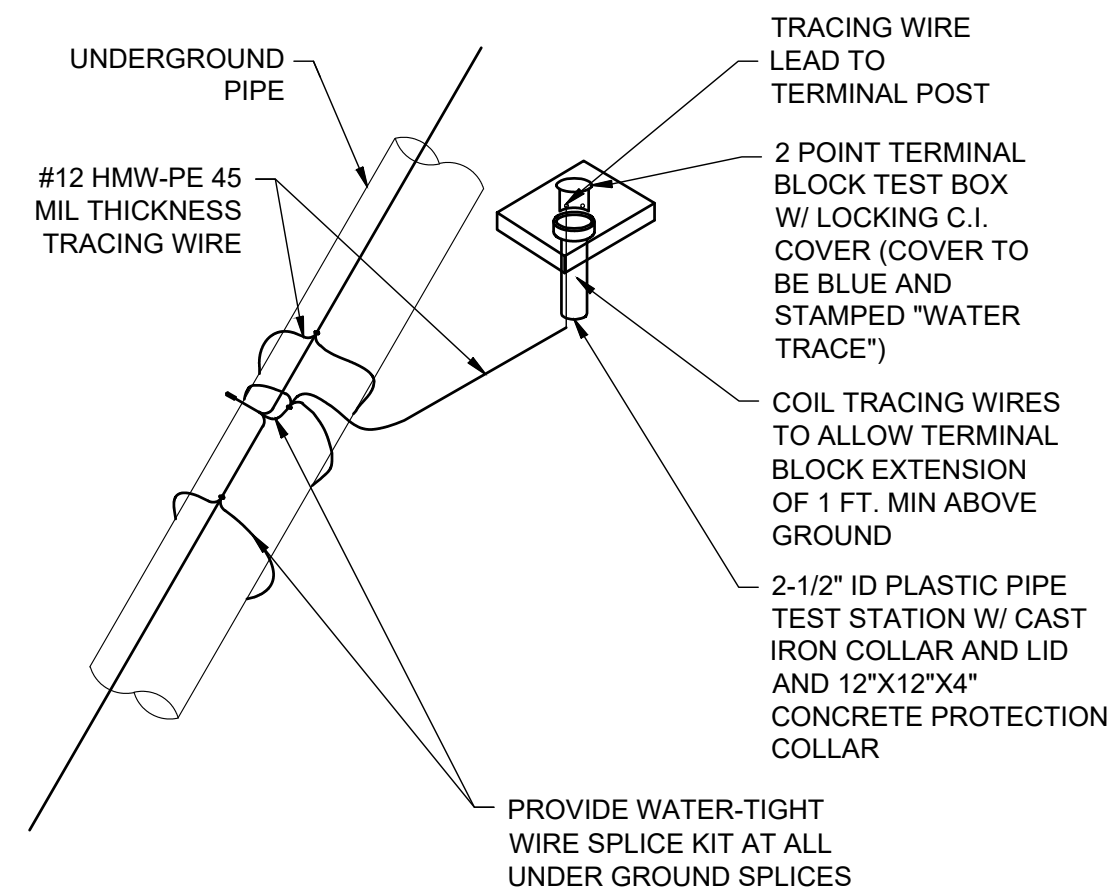
4' ACCESS CONTROL FENCE DETAIL

SCALE: NTS



VALVE BOX DETAIL

1"=1'-0"

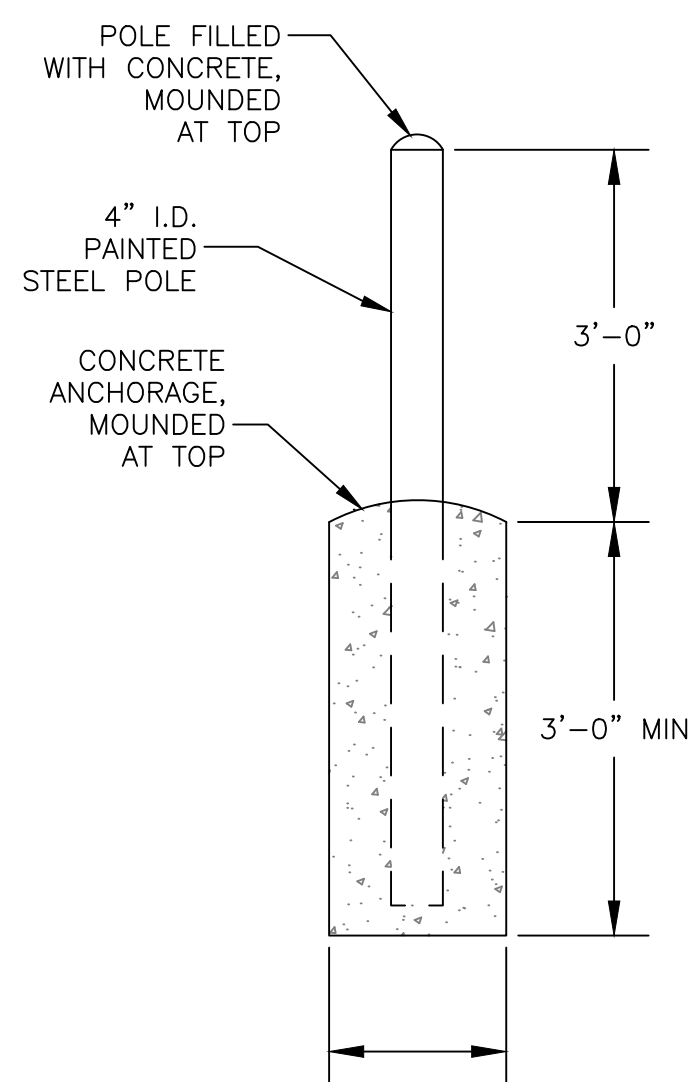


NOTES:

1. THE DISTANCE BETWEEN TEST BOXES SHALL NOT EXCEED 1500 FEET AS MEASURED ALONG THE BURIED PIPE.
2. USE VALVE BOXES IN PLACE OF TEST BOXES WHEN VALVES ARE SPACED LESS THAN 1500 FEET.
3. INSTALL TRACER WIRE TEST BOX AT EACH FIRE HYDRANT.
4. SPACING AND LOCATION OF TEST BOXES TO BE DETERMINED BY OWNER AND ENGINEER.

TRACER WIRE DETAIL

SCALE: NTS



PIPE BOLLARD DETAIL

SCALE: NTS

REV. NO.	DATE	DESCRIPTION	APPROVED BY
1	05/03/25	ISSUED FOR BID	GP

DATE OF ISSUE: 05/03/25
DESIGNED BY: ANT
DRAWN BY: RT, ANT
CHECKED BY: GP
APPROVED BY: GP



TOWN OF TAOS  
TAOS COUNTY, NEW MEXICO  
EDA 08-79-05544

TAOS REGIONAL AIRPORT WATER  
AND WASTEWATER UTILITIES  
TAOS COUNTY, NM

CIVIL DETAILS 1

SHEET 23 OF 34  
DWG NO. C-18

JOB NO.  
DB21.1270