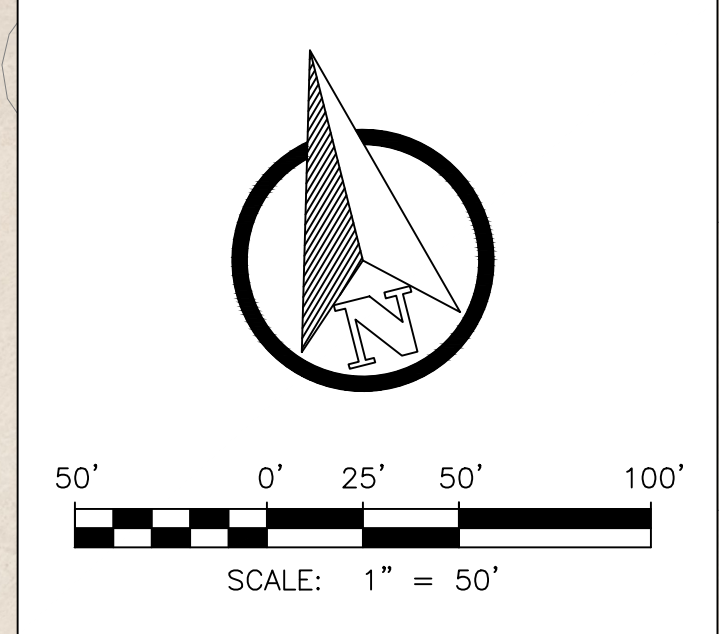
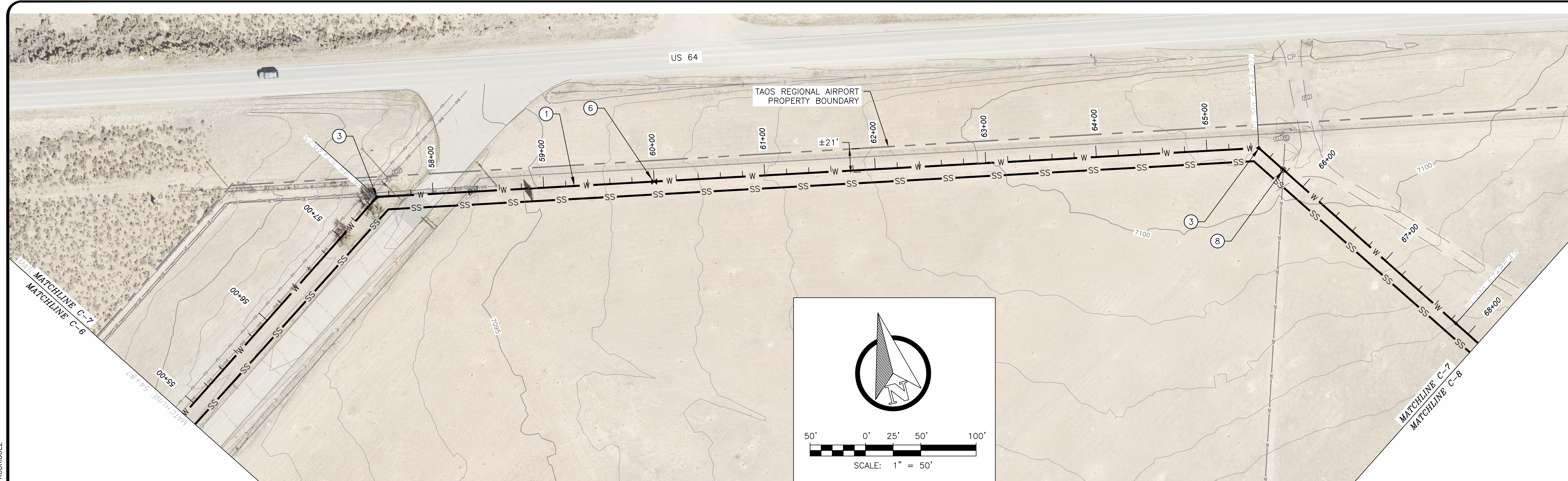
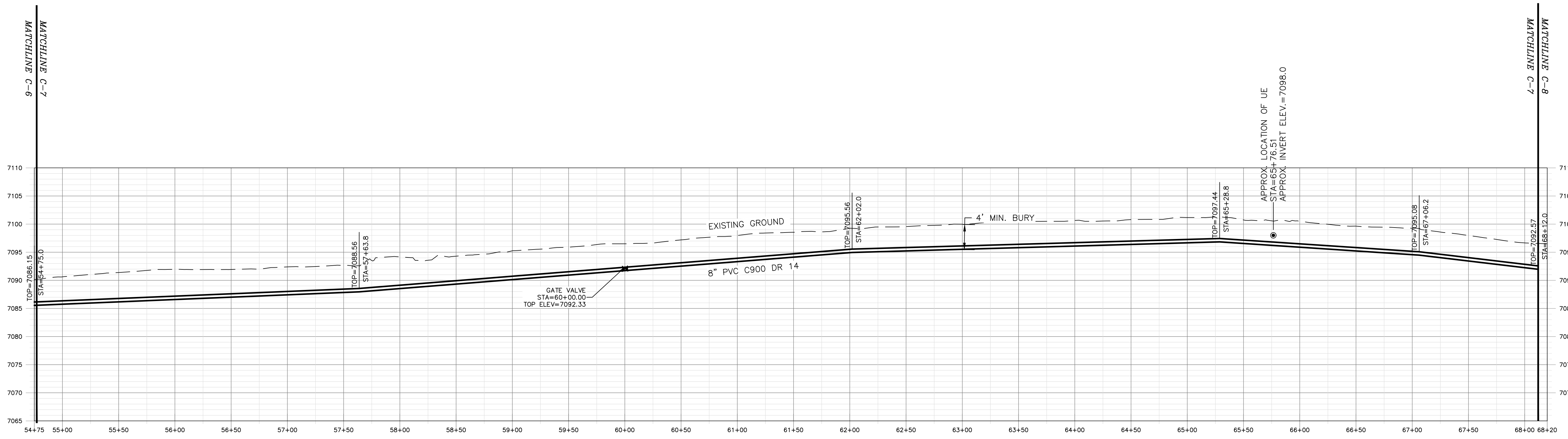


\\DATA\ASB\DATAS\PROJECTS\DB21.1270_TAOS_AIRPORT-ABETA_CONSTRUCTION\CAD\PRODUCTION\ON SITE UTILITIES\C-7 - WATER P. AND P. 5.DWG July 1, 2025 - 2:14 PM BY: ISABEL RODRIGUEZ



PLAN

- GENERAL NOTES:**
- CLEAR AND GRUB PIPE CORRIDOR (MIN 10' WIDTH) AND GRADE SMOOTH AFTER ALL CONSTRUCTION.
 - MINIMUM PIPE BURIAL SHALL BE 4' TO TOP OF PIPE.
 - EXISTING UTILITIES SHOWN ARE APPROXIMATE. CONTRACTOR TO CONTACT APPROPRIATE UTILITY JURISDICTION AND POTHOLE EXISTING UTILITIES AS REQUIRED TO AVOID CONFLICTS.
 - MAINTAIN 6' CLEARANCE BETWEEN EXISTING ROAD EDGE OF PAVEMENT AND WATERLINE TRENCH EXCAVATION UNLESS OTHERWISE NOTED.
 - PIPELINE CROSSINGS OF ROADWAYS AND DRIVEWAYS SHALL BE IN ACCORDANCE WITH NM PUBLIC WORKS STANDARDS.
 - MAINTAIN 10' HORIZONTAL AND 1.5' VERTICAL CLEARANCE BETWEEN WATERLINES AND SEWER FORCE MAIN.
 - PIPE RESTRAINT PER DETAIL 3, DWG C-21
- KEY NOTES:**
- 8" DR 18 C900 PVC LINE PER DETAIL 1, DWG C-18
 - 90-DEGREE BEND
 - 45-DEGREE BEND
 - 22.5-DEGREE BEND
 - 11.25-DEGREE BEND
 - GATE VALVE IN CAN PER DETAIL 3, DWG C-18
 - AIR RELEASE VALVE IN VAULT PER DETAIL 2, DWG C-20
 - UTILITY CROSSING
 - 8" DR 18 TEE
 - BLIND FLANGE
 - FIRE HYDRANT PER DETAIL 1, DWG C-20
 - 1" DR SADDLE TAP
 - 1" DR 18 HDPE WATER SERVICE LINE
 - 8" X 6" DR 18 TEE



PROFILE

HORIZONTAL SCALE: 1"=50'
VERTICAL SCALE: 1"=10'

REV. NO.	DATE	DESCRIPTION	APPROVED BY
1	05/03/25	ISSUED FOR BID	GP
2	07/02/25	REVISED KEY NOTES	GP

DATE OF ISSUE: 07/02/2025
 DESIGNED BY: ANT
 DRAWN BY: RT, ANT
 CHECKED BY: GP
 APPROVED BY: GP



TOWN OF TAOS
 TAOS COUNTY, NEW MEXICO
 EDA 08-79-05544

TAOS REGIONAL AIRPORT WATER
 AND WASTEWATER UTILITIES
 TAOS COUNTY, NM
 PLAN AND PROFILE 5 - WATER

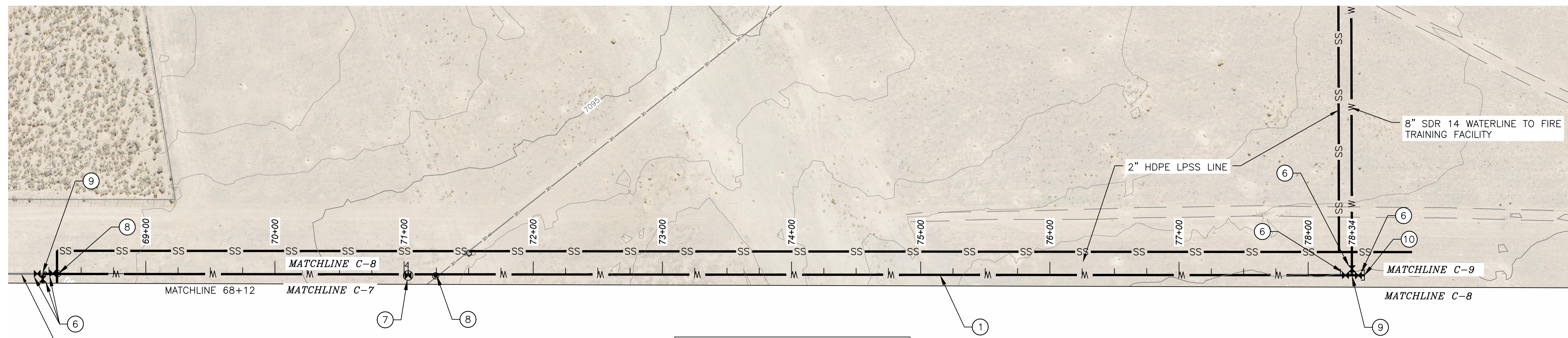
SHEET 11 OF 34
 DWG NO. C-7
 JOB NO.
 DB21.1270

GENERAL NOTES:

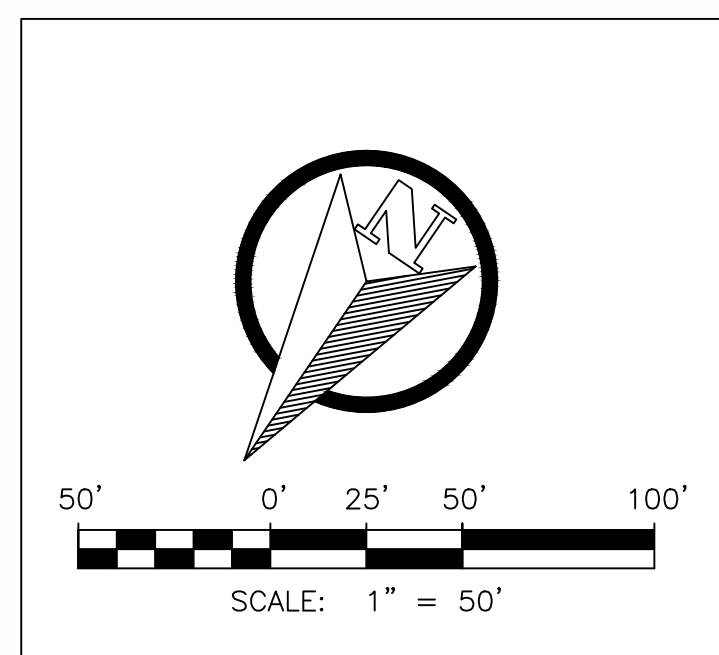
- CLEAR AND GRUB PIPE CORRIDOR (MIN 10' WIDTH) AND GRADE SMOOTH AFTER ALL CONSTRUCTION.
- MINIMUM PIPE BURIAL SHALL BE 4' TO TOP OF PIPE.
- EXISTING UTILITIES SHOWN ARE APPROXIMATE. CONTRACTOR TO CONTACT APPROPRIATE UTILITY JURISDICTION AND POTHOLE EXISTING UTILITIES AS REQUIRED TO AVOID CONFLICTS.
- MAINTAIN 6' CLEARANCE BETWEEN EXISTING ROAD EDGE OF PAVEMENT AND WATERLINE TRENCH EXCAVATION UNLESS OTHERWISE NOTED.
- PIPELINE CROSSINGS OF ROADWAYS AND DRIVEWAYS SHALL BE IN ACCORDANCE WITH NM PUBLIC WORKS STANDARDS.
- MAINTAIN 10' HORIZONTAL AND 1.5' VERTICAL CLEARANCE BETWEEN WATERLINES AND SEWER FORCE MAIN.
- PIPE RESTRAINT PER DETAIL 3, DWG C-21

KEY NOTES:

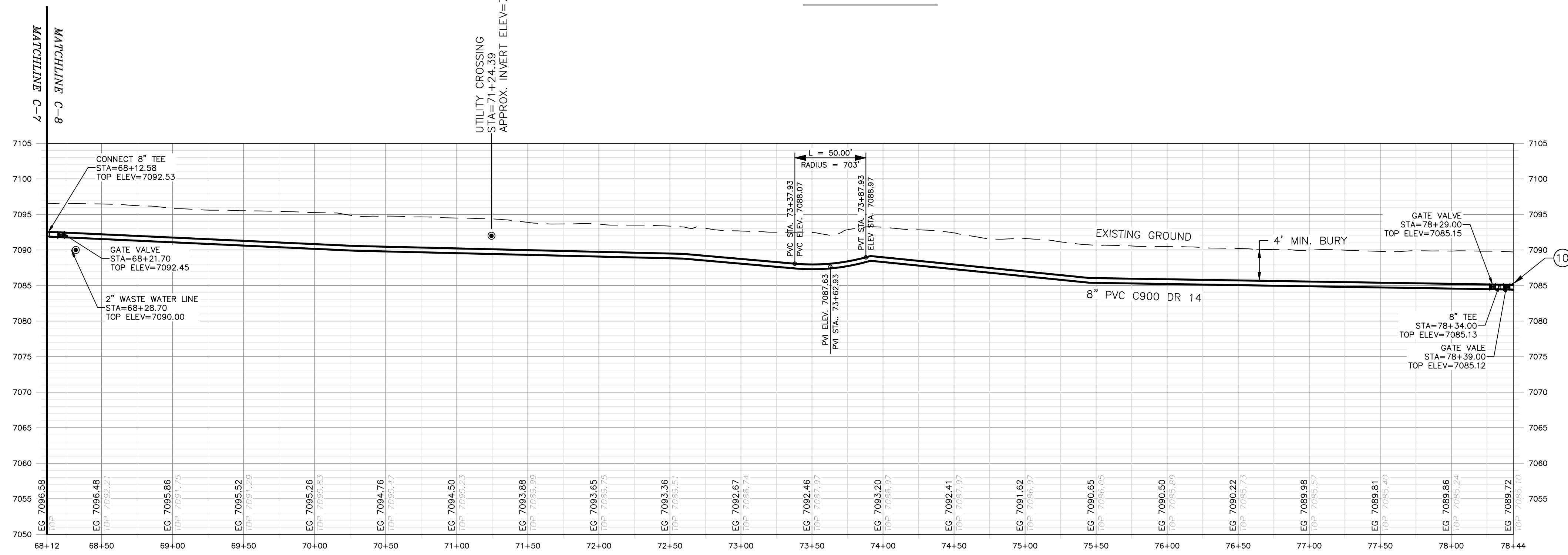
- 8" DR 18 C900 PVC LINE PER DETAIL 1, DWG C-18
- 90-DEGREE BEND
- 45-DEGREE BEND
- 22.5-DEGREE BEND
- 11.25-DEGREE BEND
- GATE VALVE IN CAN PER DETAIL 3, DWG C-18
- AIR RELEASE VALVE IN VAULT PER DETAIL 2, DWG C-20
- UTILITY CROSSING
- 8" DR 18 TEE
- BLIND FLANGE
- FIRE HYDRANT PER DETAIL 1, DWG C-20
- 1" DR SADDLE TAP
- 1" DR 18 HDPE WATER SERVICE LINE
- 8" X 6" DR 18 TEE



CONNECT TO TRANSMISSION LINE
(TRANSMISSION LINE UNDER SEPARATE CONTRACT)



PLAN



PROFILE

HORIZONTAL SCALE: 1"=50'
VERTICAL SCALE: 1"=10'

\\DATA\ASB\DATA\PROJECTS\DB21.1270_TAO\AIRPORT-ABETA_CONSTRUCTION\CAD\PRODUCTION\ON SITE UTILITIES\C-8 - WATER P. AND P. 6.DWG July 1, 2025 - 2:14 PM BY: ISABEL RODRIGUEZ

REV. NO.	DATE	DESCRIPTION	APPROVED BY
1	05/03/25	ISSUED FOR BID	GP
2	07/02/25	REVISED KEY NOTES	GP

DATE OF ISSUE: 07/02/2025
 DESIGNED BY: ANT
 DRAWN BY: RT, ANT
 CHECKED BY: GP
 APPROVED BY: GP



TOWN OF TAO
 TAO COUNTY, NEW MEXICO
 EDA 08-79-05544

TAOS REGIONAL AIRPORT WATER
 AND WASTEWATER UTILITIES
 TAO COUNTY, NM
 PLAN AND PROFILE 6 - WATER

SHEET 12 OF 34
 DWG NO. C-8
 JOB NO.
 DB21.1270

\\DATA\ASB\DATA\PROJECTS\0221.1270_TAO\AIRPORT-ABETA_CONSTRUCTION\CAD\PRODUCTION\ON SITE UTILITIES\C-9 - WATER P. AND P. 7.DWG July 1, 2025 - 2:14 PM BY: ISABEL RODRIGUEZ



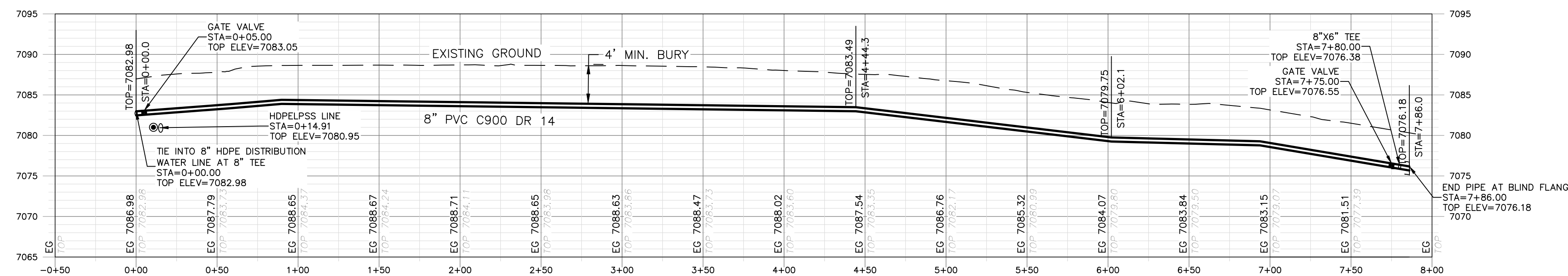
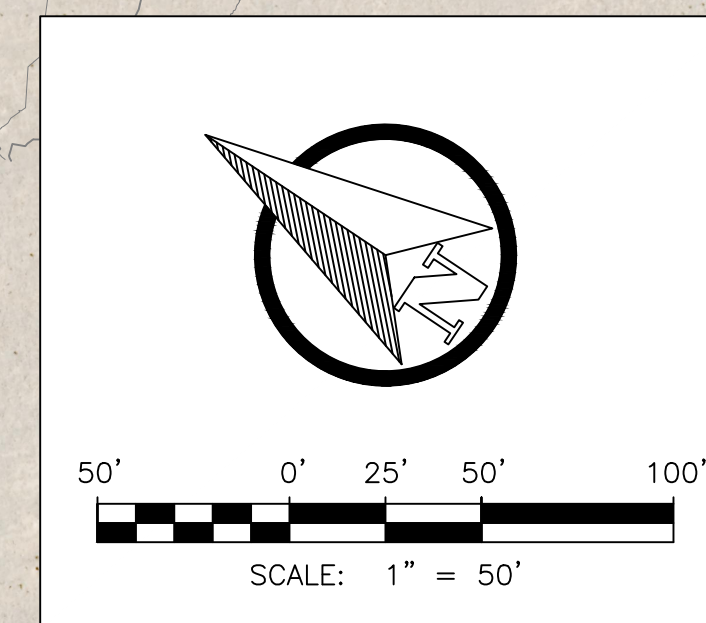
PLAN

GENERAL NOTES:

1. CLEAR AND GRUB PIPE CORRIDOR (MIN 10' WIDTH) AND GRADE SMOOTH AFTER ALL CONSTRUCTION.
2. MINIMUM PIPE BURIAL SHALL BE 4' TO TOP OF PIPE.
3. EXISTING UTILITIES SHOWN ARE APPROXIMATE. CONTRACTOR TO CONTACT APPROPRIATE UTILITY JURISDICTION AND POTHOLE EXISTING UTILITIES AS REQUIRED TO AVOID CONFLICTS.
4. MAINTAIN 6' CLEARANCE BETWEEN EXISTING ROAD EDGE OF PAVEMENT AND WATERLINE TRENCH EXCAVATION UNLESS OTHERWISE NOTED.
5. PIPELINE CROSSINGS OF ROADWAYS AND DRIVEWAYS SHALL BE IN ACCORDANCE WITH NM PUBLIC WORKS STANDARDS.
6. MAINTAIN 10' HORIZONTAL AND 1.5' VERTICAL CLEARANCE BETWEEN WATERLINES AND SEWER FORCE MAIN.
7. PIPE RESTRAINT PER DETAIL 3, DWG C-21

KEY NOTES:

- ① 8" DR 18 C900 PVC LINE PER DETAIL 1, DWG C-18
- ② 90-DEGREE BEND
- ③ 45-DEGREE BEND
- ④ 22.5-DEGREE BEND
- ⑤ 11.25-DEGREE BEND
- ⑥ GATE VALVE IN CAN PER DETAIL 3, DWG C-18
- ⑦ AIR RELEASE VALVE IN VAULT PER DETAIL 2, DWG C-20
- ⑧ UTILITY CROSSING
- ⑨ 8" DR 18 TEE
- ⑩ BLIND FLANGE
- ⑪ FIRE HYDRANT PER DETAIL 1, DWG C-20
- ⑫ 1" DR SADDLE TAP
- ⑬ 1" DR 18 HDPE WATER SERVICE LINE
- ⑭ 8" X 6" DR 18 TEE



PROFILE

HORIZONTAL SCALE: 1"=50'
VERTICAL SCALE: 1"=5'

REV. NO.	DATE	DESCRIPTION	APPROVED BY
1	05/03/25	ISSUED FOR BID	GP
2	07/02/25	REVISED KEY NOTES	GP

DATE OF ISSUE: 07/02/2025
 DESIGNED BY: ANT
 DRAWN BY: RT, ANT
 CHECKED BY: GP
 APPROVED BY: GP



TOWN OF TAO
 TAO COUNTY, NEW MEXICO
 EDA 08-79-05544

TAOS REGIONAL AIRPORT WATER
 AND WASTEWATER UTILITIES
 TAO COUNTY, NM

PLAN AND PROFILE 7 - WATER

SHEET 13 OF 34
 DWG NO. C-9

JOB NO.
 DB21.1270